

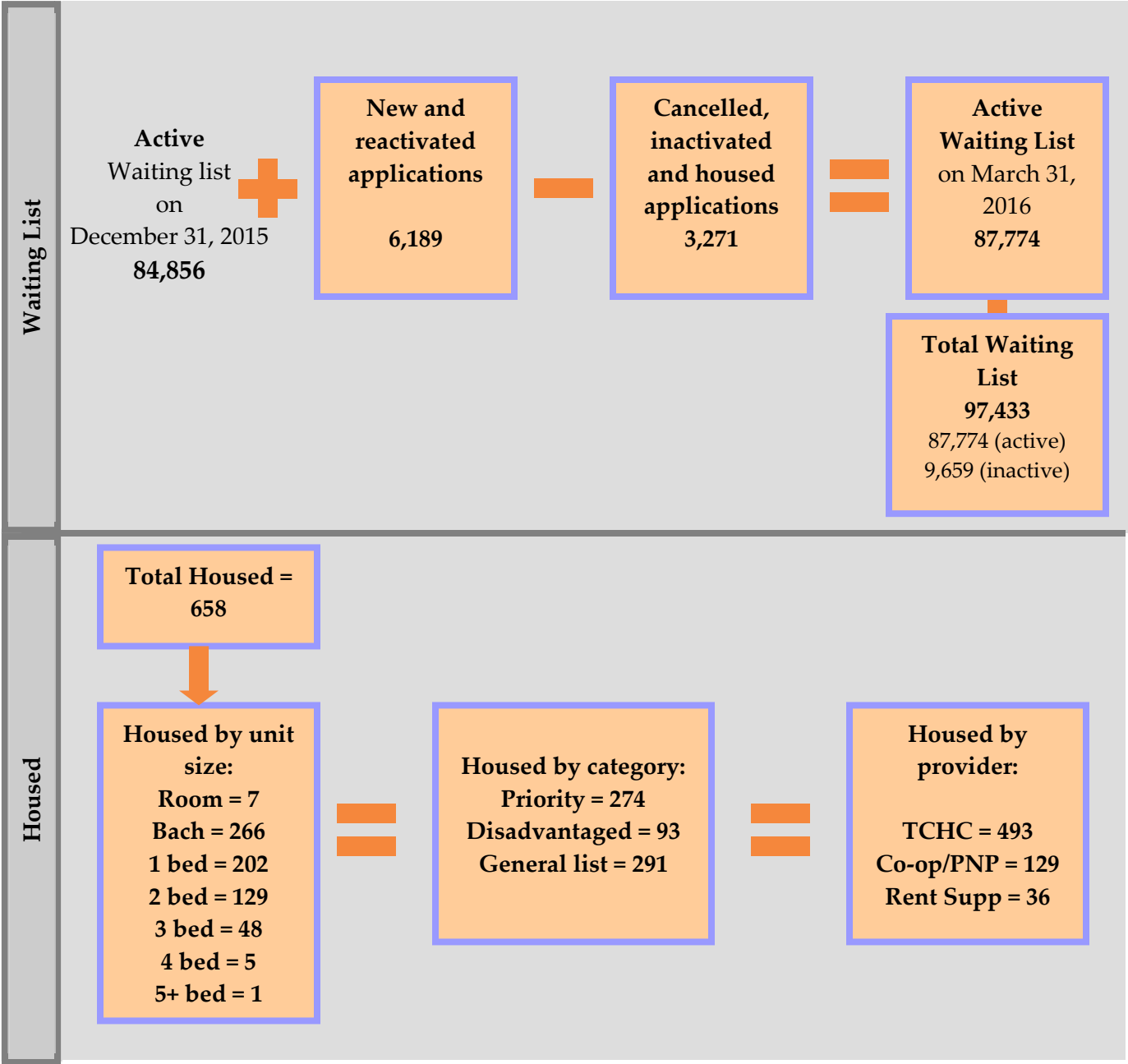


Quarterly Activity Report

1st Quarter 2016

January 1st 2016 - March 31st 2016

Summary of waiting list activity



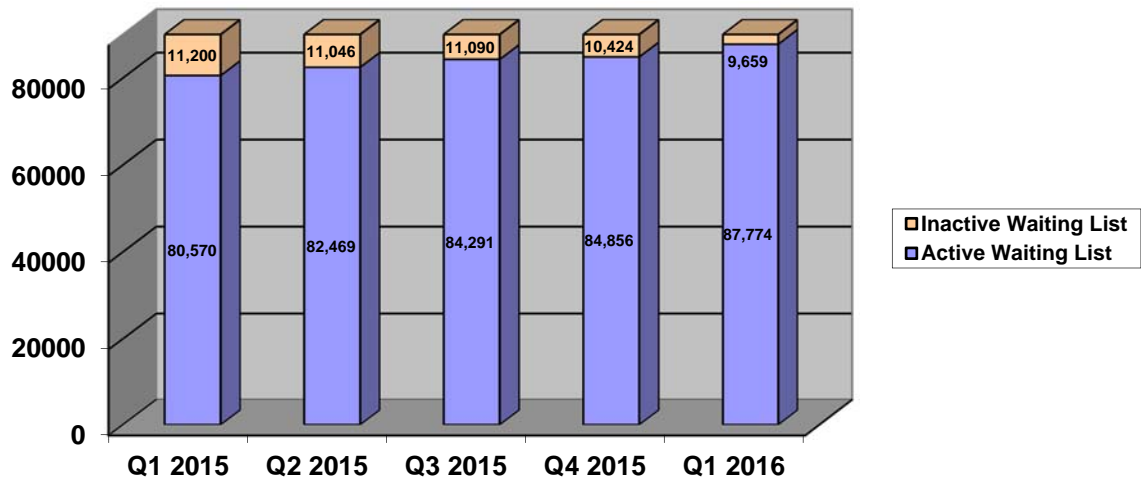
Priority applications are ranked higher than the households on the chronological waiting list and include Special Priority Household Category, terminally ill applicants and over housed households.

Disadvantaged households are homeless applicants, separated families with a child in care of Children’s Aid Society, and youth who are 16 years old at the time of applying.

Summary of waiting list activity

Total **number of people** on Housing Connections centralized waiting list for social housing is **177,502** as of March 31, 2016. The rest of the numbers in this Statistical Report refer to household applications that may have several people on their application.

- 34,557 households on the waiting list include children under the age of 17 (39%)
- 17,285 households on the waiting list are single parent households (20%)



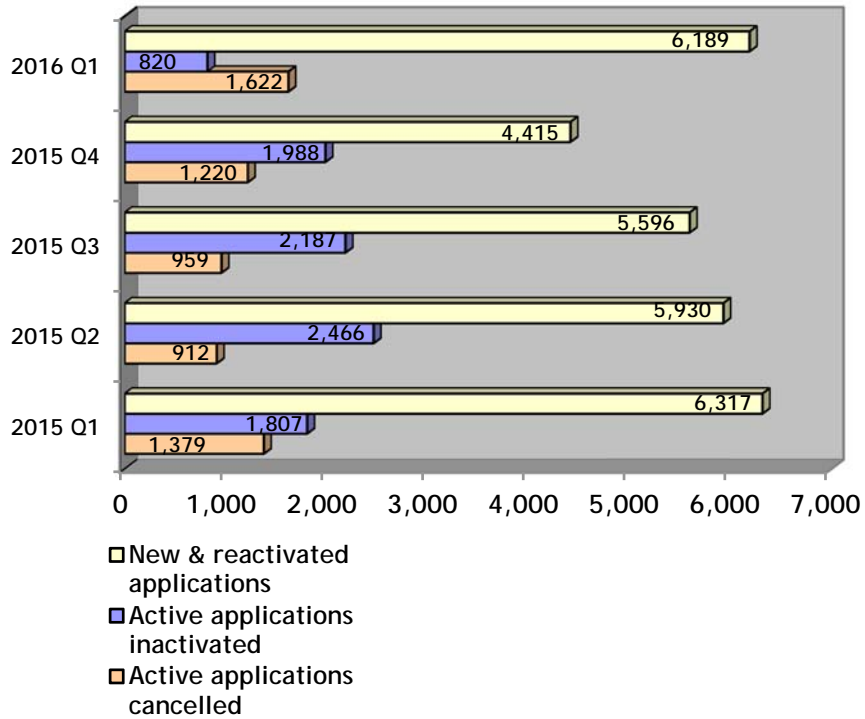
	Q1 2015	Q2 2015	Q3 2015	Q4 2015	Q1 2016
Total active wait list	80,750	82,469	84,291	84,856	87,774
Total inactive wait list	11,200	11,046	11,090	10,424	9,659
Total waiting list	91,950	93,515	95,381	95,280	97,433

‘Active’ waiting list – on waiting list and ready to be housed

‘Inactive’ waiting list – eligible to be on the waiting list but cannot be offered housing because more information is required to confirm their eligibility. Applications can be inactive for up to 18 months (five years for homeless applicants) before being cancelled.

Summary of active waiting list changes

Active Waiting List Activity



	Q1 2015	Q2 2015	Q3 2015	Q4 2015	Q1 2016
New & Reactivated Applications	6,317	5,930	5,596	4,415	6,189
Active Applications Inactivated	1,807	2,466	2,187	1,988	820
Active Applications Cancelled	1,379	912	959	1,220	1,622

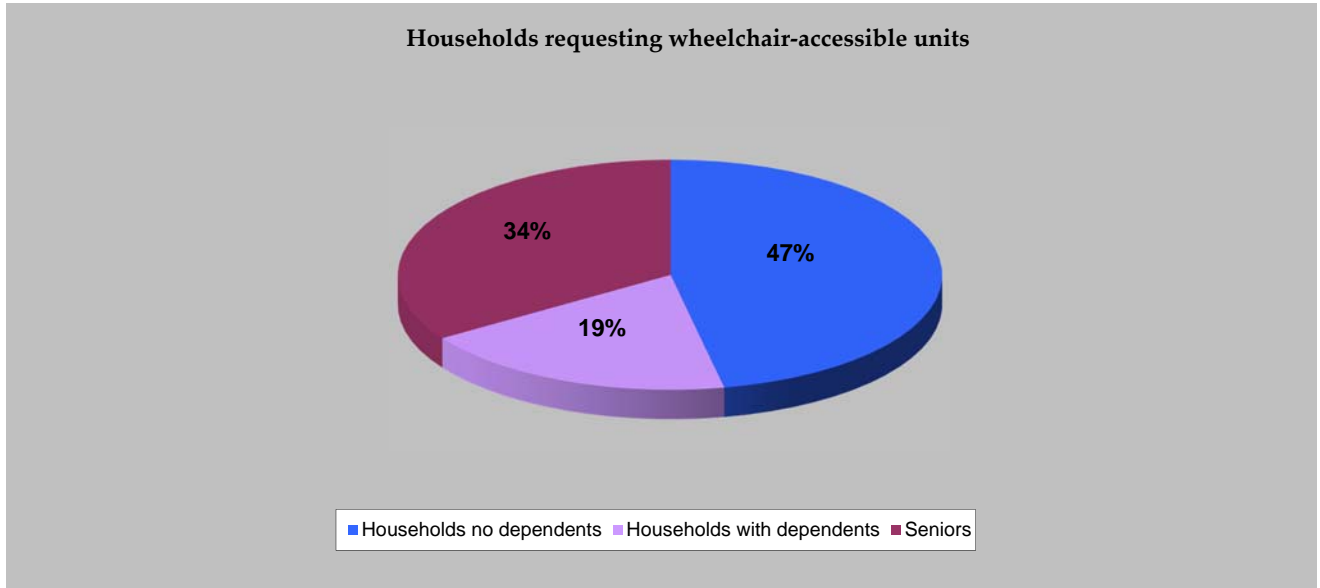
Reasons for active applications being cancelled

Applications will be cancelled at the applicant’s request, if the applicant is deceased, or if it is an incomplete web application.

Reasons for inactive applications being cancelled

If Housing Connections is unable to contact the household and the application has been inactive for 18 months (five years for homeless applicants) it can be cancelled.

Accessible Housing - demand for wheelchair-accessible units

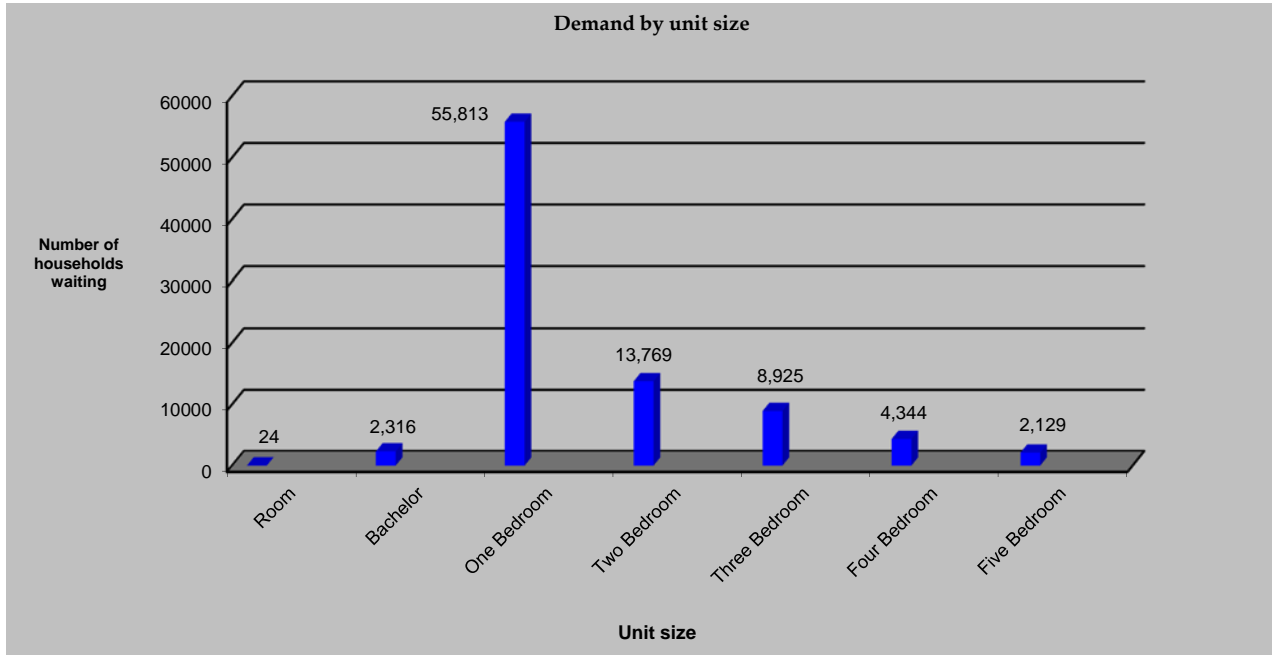


Household type	Households requesting wheelchair-accessible units
Households with no dependents	275
Households with dependents	111
Seniors	201
Totals	587

A **wheelchair-accessible unit** has been modified to be accessible to an individual who uses a wheelchair or similar aid because of a physical disability. Accessible units may include wider doorways and hallways, lowered counter tops, grab bars, etc. Applicants waiting for wheel-chair accessible units are listed on the regular chronological waiting list.

Some units are modified to be accessible for individuals who are hearing or visually impaired. These households are listed on the general waiting list.

Summary of the active waiting list by unit size



The unit size indicated is the largest size selected by the applicant. It is possible for households to be listed for more than one unit size. For example, many single-member households will have both bachelor and one-bedroom units listed on their application, so it is counted as waiting for a one-bedroom.

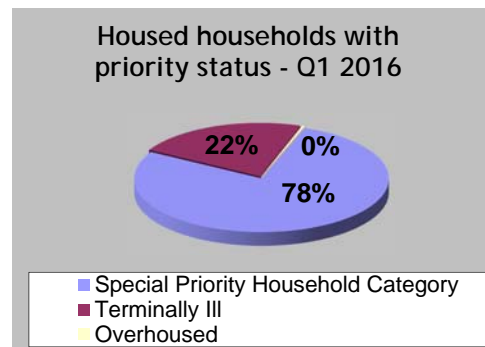
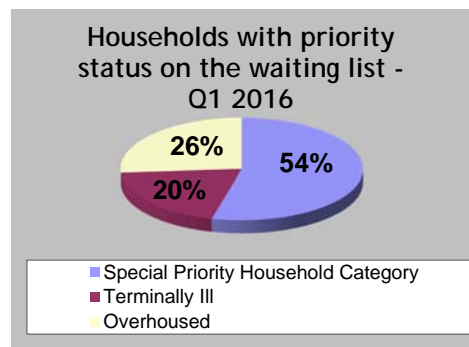
Unit Type	Room	Bachelor	One Bedroom	Two Bedroom	Three Bedroom	Four Bedroom	Five + Bedrooms	Total
Household no dependents	20	1,026	27,577	2,542	531	107	32	31,835
Household with dependents	0	6	477	10,127	8,308	4,217	2,096	25,227
Seniors	4	1,284	27,759	1,100	86	20	5	30,258
Totals	24	2,316	55,813	13,769	8,925	4,344	2,129	87,320

* This number is different than the total active waiting list on page 3 because some households with new applications have not yet selected their housing choices.

Households with priority (as of March 31, 2016)

Households with priority are ranked higher than the households on the chronological waiting list. The three priorities on the waiting list are:

1. Special Priority Household Category for victims of abuse, which is the first priority that is recognized by all housing providers.
2. Medical priority (terminally ill) for applicants who have less than two years to live (which is optional for housing providers).
3. Over housed subsidized households who are living in a unit that is larger than the unit size they qualify for. These households need to move to a smaller unit.



Households with priority on the waiting list

Priority type	Q1 2015	Q2 2015	Q3 2015	Q4 2015	Q1 2016
Special Priority Household Category	1,524	1,554	1,546	1,488	1,389
Terminally ill	523	526	549	543	511
Over housed	779	700	677	677	674
Total	2,826	2,780	2,772	2,708	2,574

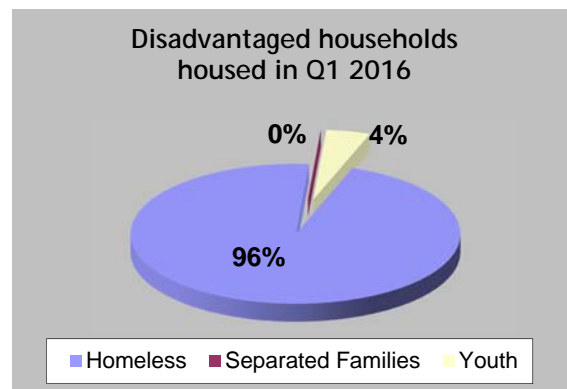
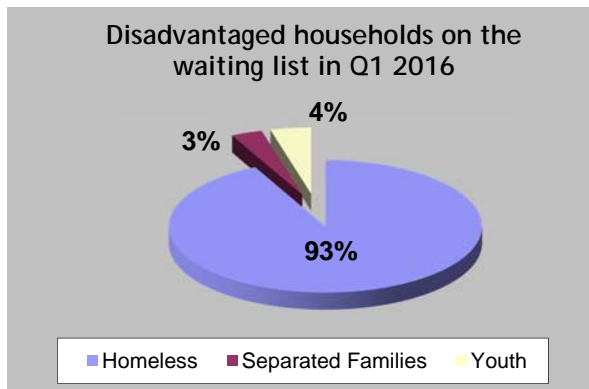
* The increase to the number of over housed households on the waiting list represents the Toronto Community Housing over housed tenants that moved to the centralized waiting list in Q1.

Housed households with priority status

Priority type	Q1 2015	Q2 2015	Q3 2015	Q4 2015	Q1 2016
Special Priority Household Category	210	196	199	225	219
Terminally III	39	31	37	38	62
Over housed	4	13	5	11	1
Total	253	240	241	274	282

Disadvantaged households (as of March 31, 2016)

In addition to the priorities, housing providers offer one-in-every-seven vacancies to homeless applicants, separated families with a child in care of Children’s Aid Society, or youth who are 16/17 years old at the time of applying.



Disadvantaged households on the waiting list

Household type	Q1 2015	Q2 2015	Q3 2015	Q4 2015	Q1 2016
Homeless*	2,102	2,227	2,512	2,509	2,622
Separated families	69	69	82	92	91
Youth	122	118	117	114	119
Total	2,293	2,414	2,711	2,715	2,832

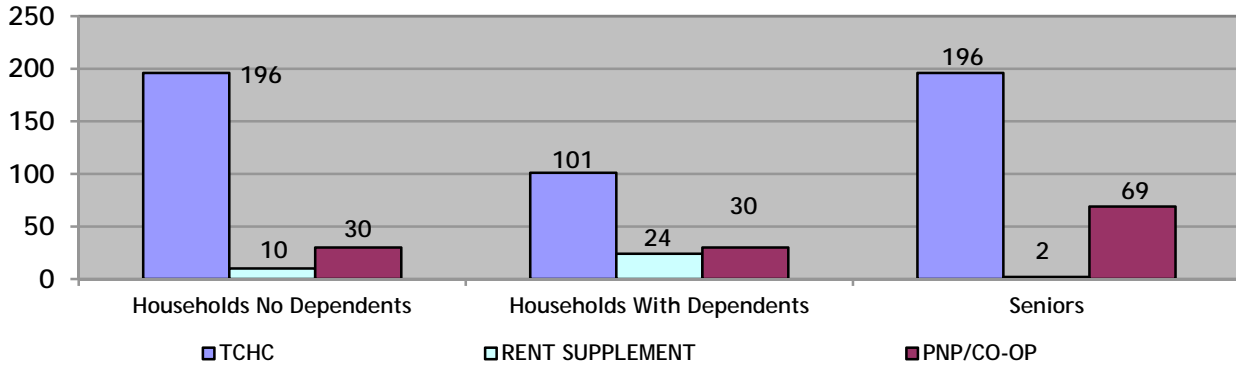
Disadvantaged households housed

Household type	Q1 2015	Q2 2015	Q3 2015	Q4 2015	Q1 2016
Homeless*	70	86	78	71	89
Separated families	2	3	0	3	0
Youth	4	3	2	3	4
Total	75	92	80	77	93

* This count does not include Special Priority Household Category living in shelters because those households are represented in the Special Priority Household Category totals.

Total housed using TAWL (as of March 31, 2016)

1st Quarter Housed Totals



TCHC	Room	Bach	1B	2B	3B	4B	5B+	Total
Households no Dependents	6	117	53	16	4	0	0	196
Households with Dependents	0	4	5	62	27	3	0	101
Seniors	1	128	63	3	1	0	0	196
Total	7	249	121	81	32	3	0	493

Rent Supplement	Room	Bach	1B	2B	3B	4B	5B+	Total
Households no Dependents	0	0	8	2	0	0	0	10
Households with Dependents	0	0	0	13	8	2	1	24
Seniors	0	0	2	0	0	0	0	2
Total	0	0	10	15	8	2	1	36

PNP and CO-OP	Room	Bach	1B	2B	3B	4B	5B+	Total
Households no Dependents	0	8	16	5	1	0	0	30
Households with Dependents	0	0	0	23	7	0	0	30
Seniors	0	9	55	5	0	0	0	69
Total	0	17	71	33	8	0	0	129

GRAND TOTAL	7	266	202	129	48	5	1	658
--------------------	----------	------------	------------	------------	-----------	----------	----------	------------

TCHC = Toronto Community Housing Corporation PNP = Private Non-Profit Housing Provider CO-OP = Co-operative Housing Provider
TAWL = Toronto Social Housing Connections Application Waiting List