



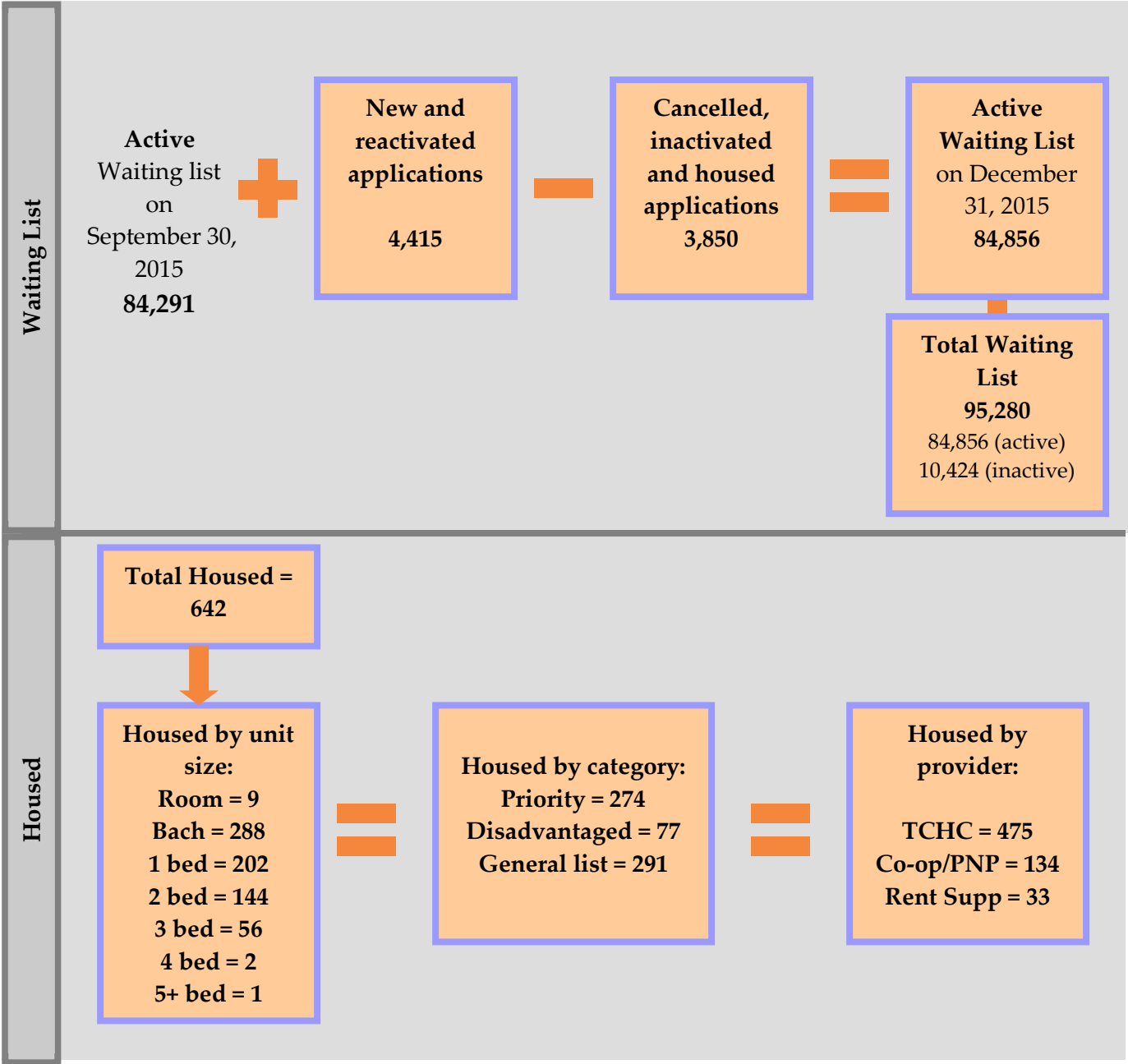
**Quarterly  
Activity  
Report**

---

**4th Quarter 2015**

October 1st 2015 - December 31st 2015

**Summary of waiting list activity**



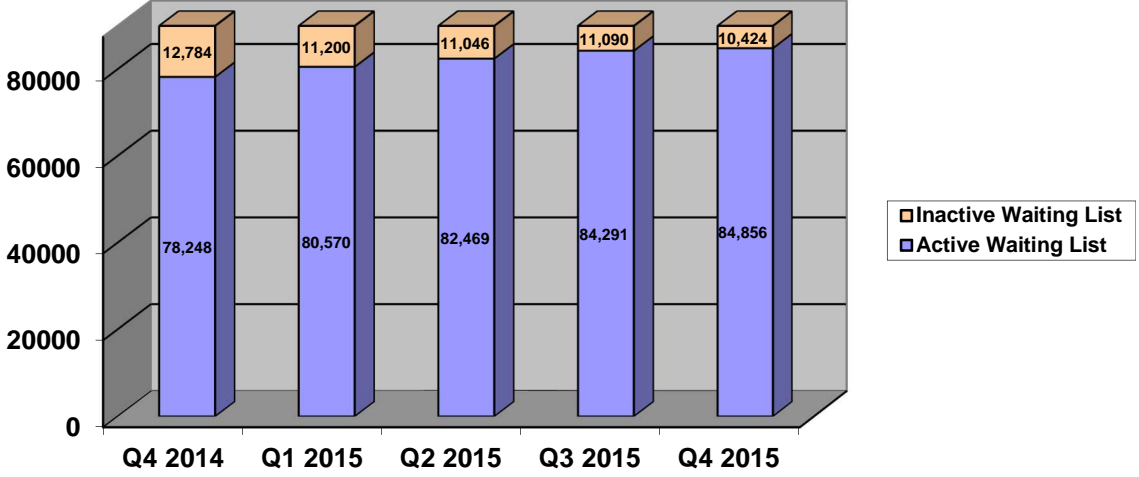
**Priority applications** are ranked higher than the households on the chronological waiting list and include Special Priority Household Category, terminally ill applicants and over housed households.

**Disadvantaged households** are homeless applicants, separated families with a child in care of Children’s Aid Society, and youth who are 16 years old at the time of applying.

## Summary of waiting list activity

Total **number of people** on Housing Connections centralized waiting list for social housing is **173,816** as of December 31, 2015. The rest of the numbers in this Statistical Report refer to household applications that may have several people on their application.

- 33,737 households on the waiting list include children under the age of 17 (40%)
- 16,838 households on the waiting list are single parent households (20%)

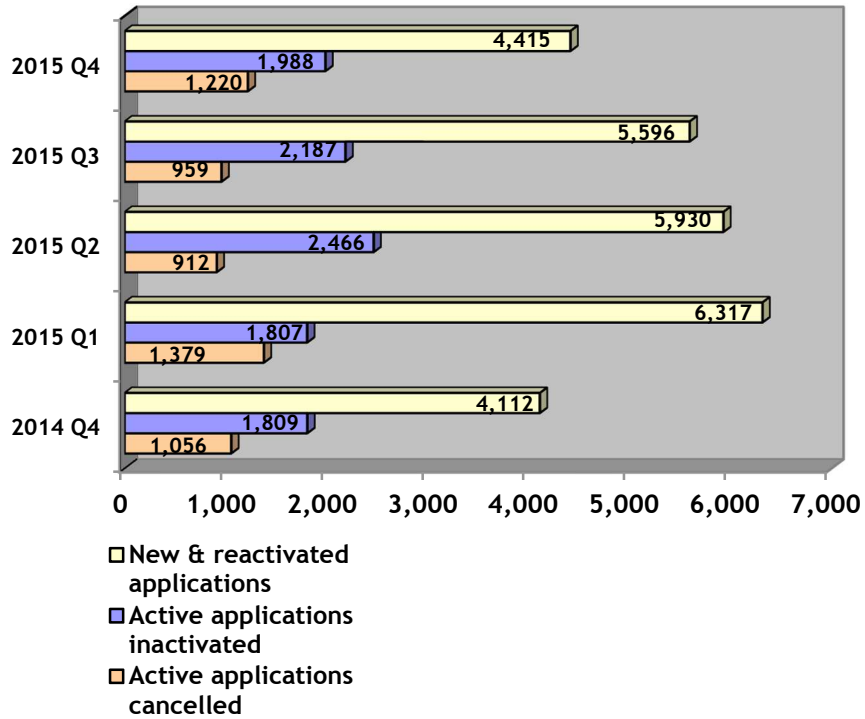


	Q4 2014	Q1 2015	Q2 2015	Q3 2015	Q4 2015
Total active wait list	78,248	80,750	82,469	84,291	84,856
Total inactive wait list	12,784	11,200	11,046	11,090	10,424
<b>Total waiting list</b>	<b>91,032</b>	<b>91,950</b>	<b>93,515</b>	<b>95,381</b>	<b>95,280</b>

**‘Active’ waiting list** – on waiting list and ready to be housed  
**‘Inactive’ waiting list** – eligible to be on the waiting list but cannot be offered housing because more information is required to confirm their eligibility. Applications can be inactive for up to 18 months (five years for homeless applicants) before being cancelled.

## Summary of active waiting list changes

**Active Waiting List Activity**



	Q4 2014	Q1 2015	Q2 2015	Q3 2015	Q4 2015
<b>New &amp; Reactivated Applications</b>	4,112	6,317	5,930	5,596	4,415
<b>Active Applications Inactivated</b>	1,809	1,807	2,466	2,187	1,988
<b>Active Applications Cancelled</b>	1,056	1,379	912	959	1,220

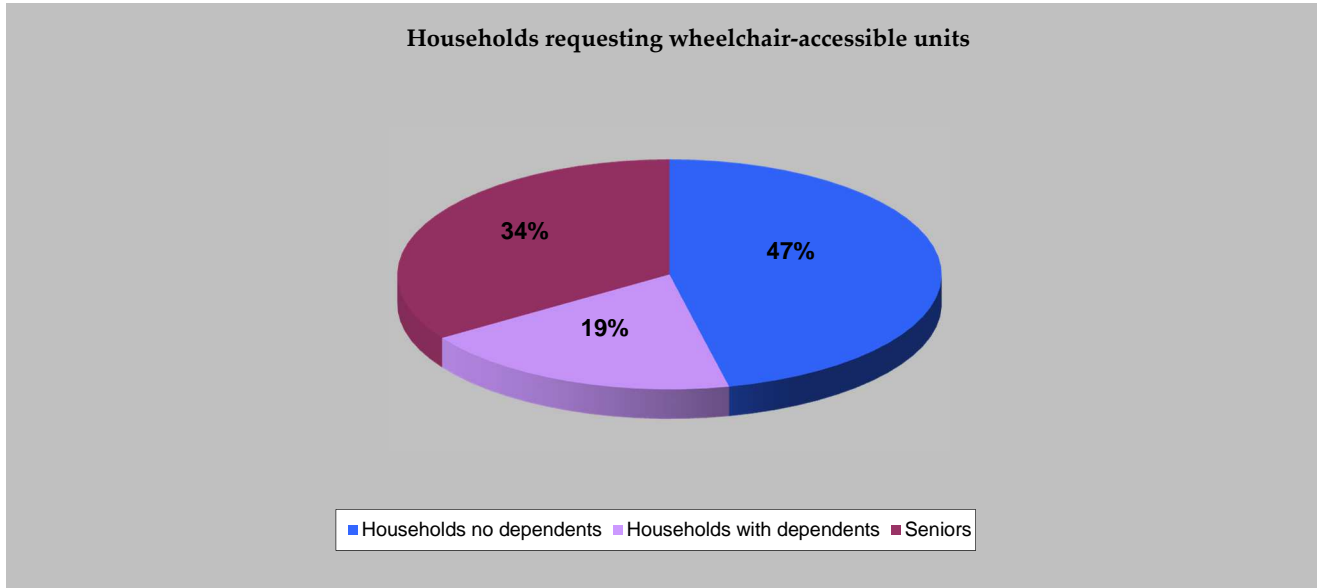
**Reasons for active applications being cancelled**

Applications will be cancelled at the applicant’s request, if the applicant is deceased, or if it is an incomplete web application.

**Reasons for inactive applications being cancelled**

If Housing Connections is unable to contact the household and the application has been inactive for 18 months (five years for homeless applicants) it can be cancelled.

## Accessible Housing - demand for wheelchair-accessible units

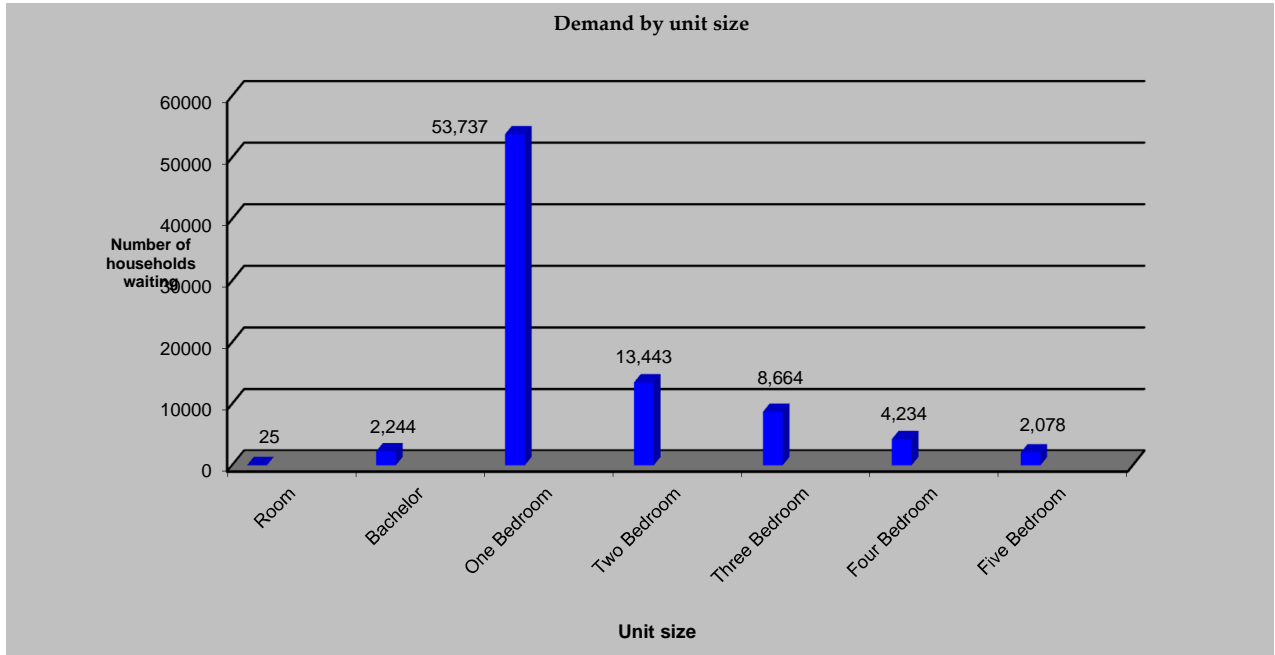


Household type	Households requesting wheelchair-accessible units
Households with no dependents	278
Households with dependents	115
Seniors	205
<b>Totals</b>	<b>598</b>

A **wheelchair-accessible unit** has been modified to be accessible to an individual who uses a wheelchair or similar aid because of a physical disability. Accessible units may include wider doorways and hallways, lowered counter tops, grab bars, etc. Applicants waiting for wheel-chair accessible units are listed on the regular chronological waiting list.

Some units are modified to be accessible for individuals who are hearing or visually impaired. These households are listed on the general waiting list.

## Summary of the active waiting list by unit size



The unit size indicated is the largest size selected by the applicant. It is possible for households to be listed for more than one unit size. For example, many single-member households will have both bachelor and one-bedroom units listed on their application, so it is counted as waiting for a one-bedroom.

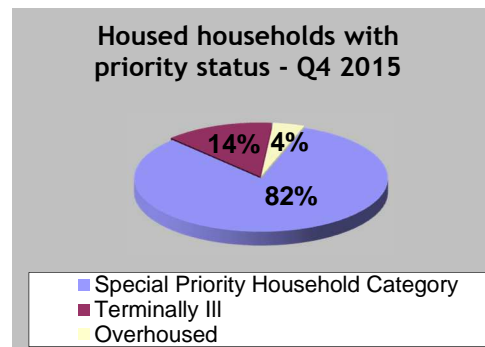
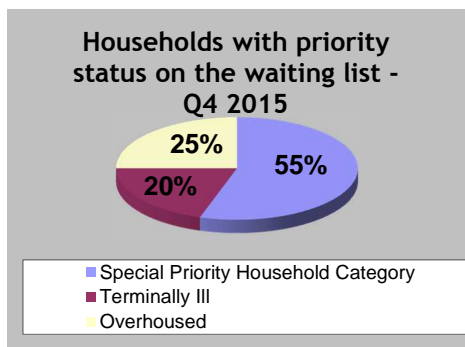
Unit Type	Room	Bachelor	One Bedroom	Two Bedroom	Three Bedroom	Four Bedroom	Five + Bedrooms	Total
Household no dependents	20	987	26,538	2,484	500	93	32	30,654
Household with dependents	0	4	396	9,904	8,094	4,127	2,041	24,566
Seniors	5	1,253	26,803	1,055	70	14	5	29,205
<b>Totals</b>	<b>25</b>	<b>2,244</b>	<b>53,737</b>	<b>13,443</b>	<b>8,664</b>	<b>4,234</b>	<b>2,078</b>	<b>84,425</b>

\* This number is different than the total active waiting list on page 3 because some households with new applications have not yet selected their housing choices.

## Households with priority (as of December 31, 2015)

Households with priority are ranked higher than the households on the chronological waiting list. The three priorities on the waiting list are:

1. Special Priority Household Category for victims of abuse, which is the first priority that is recognized by all housing providers.
2. Medical priority (terminally ill) for applicants who have less than two years to live (which is optional for housing providers).
3. Over housed subsidized households who are living in a unit that is larger than the unit size they qualify for. These households need to move to a smaller unit.



### Households with priority on the waiting list

Priority type	Q4 2014	Q1 2015	Q2 2015	Q3 2015	Q4 2015
Special Priority Household Category	1,559	1,524	1,554	1,546	1,488
Terminally ill	535	523	526	549	543
Over housed	853	779	700	677	677
<b>Total</b>	<b>2,947</b>	<b>2,826</b>	<b>2,780</b>	<b>2,772</b>	<b>2,708</b>

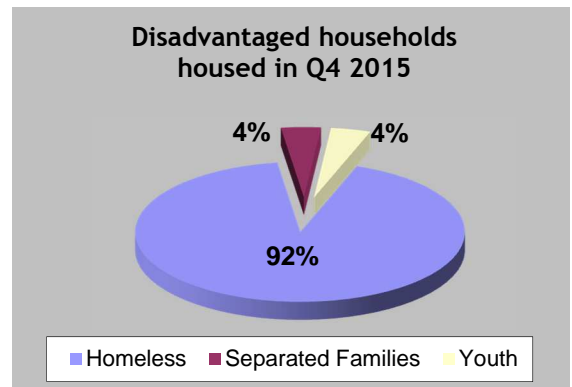
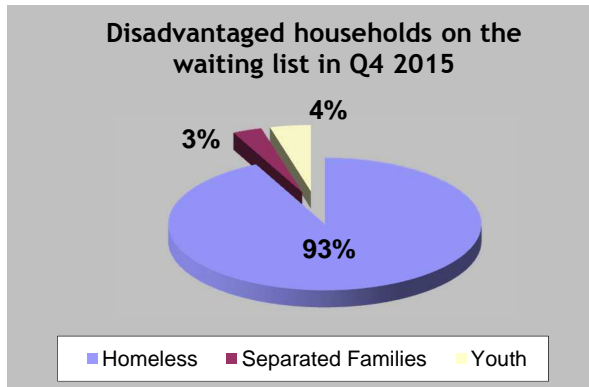
\* The increase to the number of over housed households on the waiting list represents the Toronto Community Housing over housed tenants that moved to the centralized waiting list in Q1.

### Housed households with priority status

Priority type	Q4 2014	Q1 2015	Q2 2015	Q3 2015	Q4 2015
Special Priority Household Category	229	210	196	199	225
Terminally Ill	38	39	31	37	38
Over housed	9	4	13	5	11
<b>Total</b>	<b>276</b>	<b>253</b>	<b>240</b>	<b>241</b>	<b>274</b>

## Disadvantaged households (as of December 31, 2015)

In addition to the priorities, housing providers offer one-in-every-seven vacancies to homeless applicants, separated families with a child in care of Children’s Aid Society, or youth who are 16/17 years old at the time of applying.



### Disadvantaged households on the waiting list

Household type	Q4 2014	Q1 2015	Q2 2015	Q3 2015	Q4 2015
Homeless*	1,844	2,102	2,227	2,512	2,509
Separated families	68	69	69	82	92
Youth	121	122	118	117	114
<b>Total</b>	<b>2,033</b>	<b>2,293</b>	<b>2,414</b>	<b>2,711</b>	<b>2,715</b>

### Disadvantaged households housed

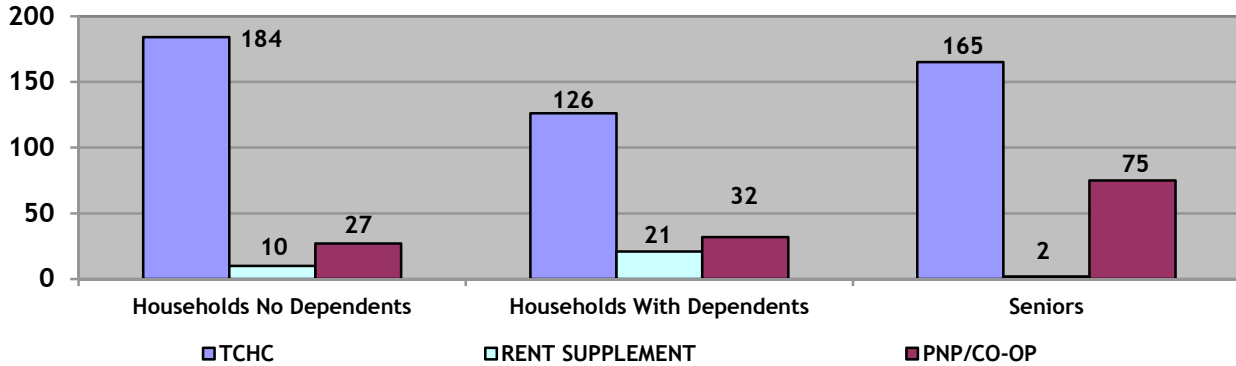
Household type	Q4 2014	Q1 2015	Q2 2015	Q3 2015	Q4 2015
Homeless*	67	70	86	78	71
Separated families	2	2	3	0	3
Youth	5	4	3	2	3
<b>Total</b>	<b>74</b>	<b>75</b>	<b>92</b>	<b>80</b>	<b>77</b>

\* This count does not include Special Priority Household Category living in shelters because those households are represented in the Special Priority Household Category totals.



## Total housed using TAWL (as of December 31, 2015)

4th Quarter Housed Totals



TCHC	Room	Bach	1B	2B	3B	4B	5B+	Total
Households no Dependents	8	97	65	14	0	0	0	184
Households with Dependents	0	5	4	74	42	1	0	126
Seniors	1	112	45	6	1	0	0	165
<b>Total</b>	<b>9</b>	<b>214</b>	<b>114</b>	<b>94</b>	<b>43</b>	<b>1</b>	<b>0</b>	<b>475</b>

Rent Supplement	Room	Bach	1B	2B	3B	4B	5B+	Total
Households no Dependents	0	0	7	3	0	0	0	10
Households with Dependents	0	0	0	14	5	1	1	21
Seniors	0	0	1	1	0	0	0	2
<b>Total</b>	<b>0</b>	<b>0</b>	<b>8</b>	<b>18</b>	<b>5</b>	<b>1</b>	<b>1</b>	<b>33</b>

PNP and CO-OP	Room	Bach	1B	2B	3B	4B	5B+	Total
Households no Dependents	0	8	15	4	0	0	0	27
Households with Dependents	0	0	2	22	8	0	0	32
Seniors	0	6	63	6	0	0	0	75
<b>Total</b>	<b>0</b>	<b>14</b>	<b>80</b>	<b>32</b>	<b>8</b>	<b>0</b>	<b>0</b>	<b>134</b>

<b>GRAND TOTAL</b>	<b>9</b>	<b>228</b>	<b>202</b>	<b>144</b>	<b>56</b>	<b>2</b>	<b>1</b>	<b>642</b>
--------------------	----------	------------	------------	------------	-----------	----------	----------	------------

TCHC = Toronto Community Housing Corporation    PNP = Private Non-Profit Housing Provider    CO-OP = Co-operative Housing Provider  
 TAWL = Toronto Social Housing Connections Application Waiting List