

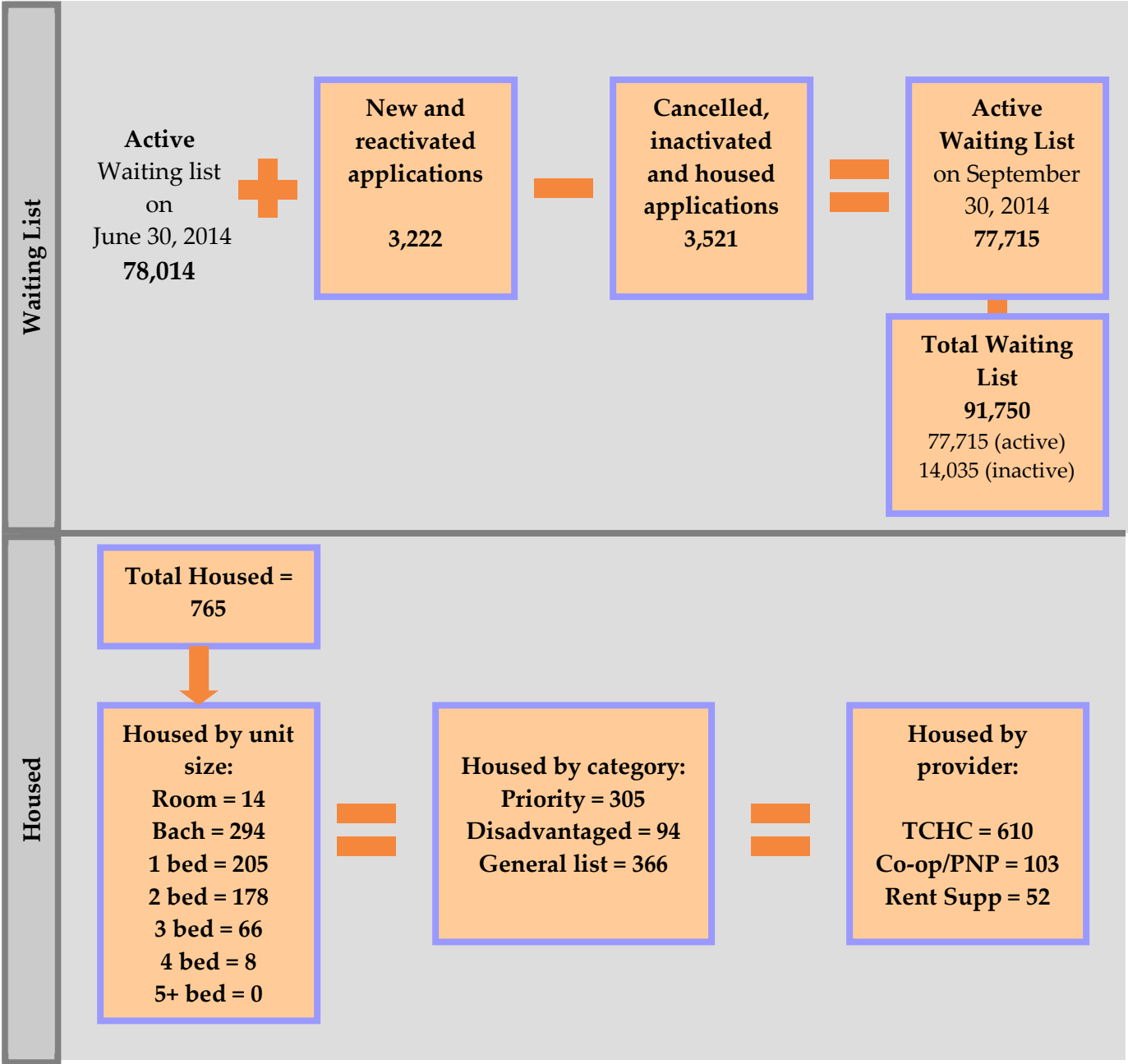


**Quarterly
Activity
Report**

3rd Quarter 2014

July 1st 2014 - September 30th 2014

Summary of waiting list activity



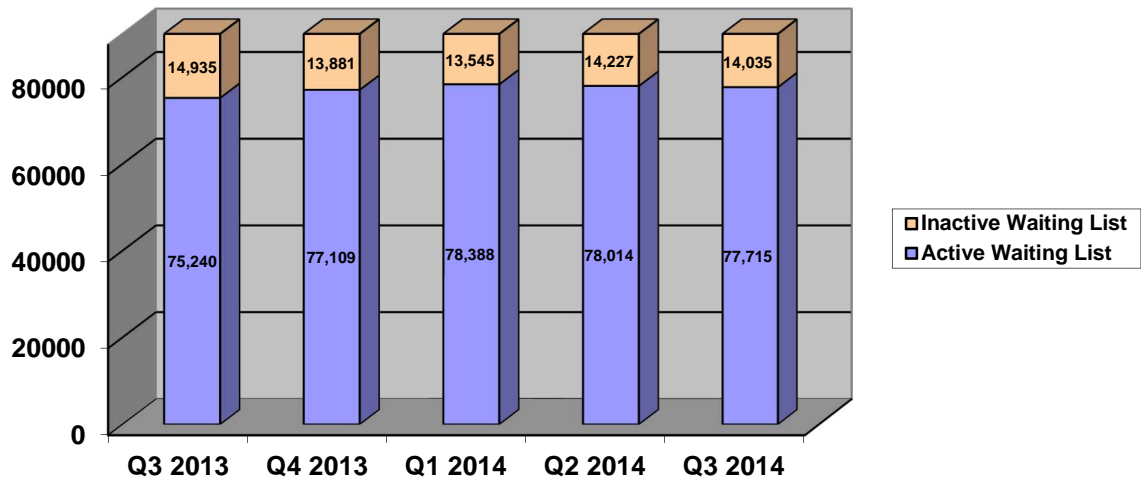
Priority applications are ranked higher than the households on the chronological waiting list and include Special Priority Household Category, terminally ill applicants and over housed households.

Disadvantaged households are homeless applicants, separated families with a child in care of Children’s Aid Society, and youth who are 16 years old at the time of applying.

Summary of waiting list activity

Total **number of people** on Housing Connections centralized waiting list for social housing is **168,916** as of September 30, 2014. The rest of the numbers in this Statistical Report refer to household applications that may have several people on their application.

- 31,896 households on the waiting list include children under the age of 17 (41%)
- 15,616 households on the waiting list are single parent households (20%)



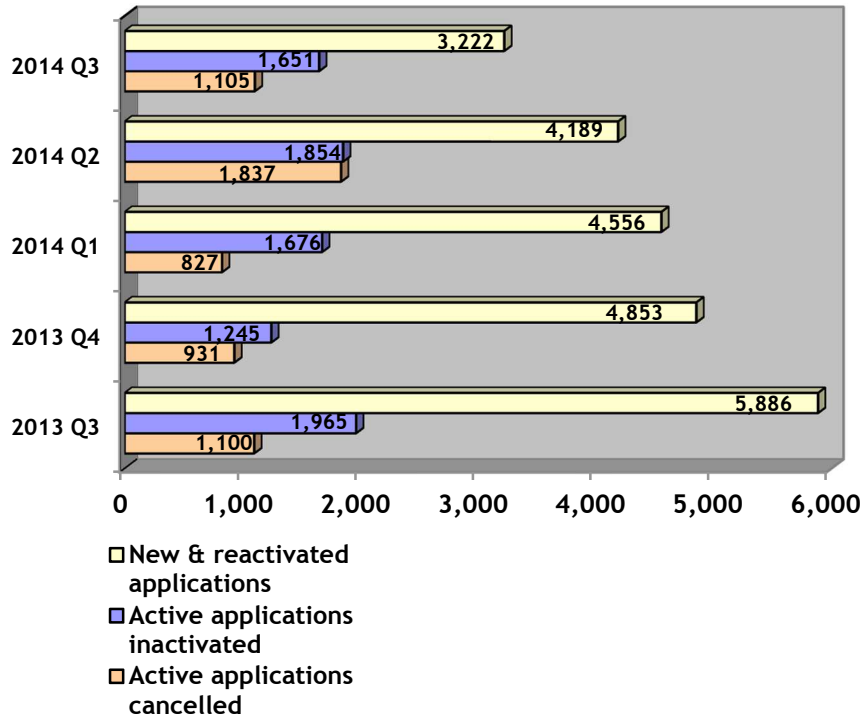
	Q3 2013	Q4 2013	Q1 2014	Q2 2014	Q3 2014
Total active wait list	75,240	77,109	78,388	78,014	77,715
Total inactive wait list	14,935	13,881	13,545	14,227	14,035
Total waiting list	90,175	90,990	91,933	92,241	91,750

‘Active’ waiting list – on waiting list and ready to be housed

‘Inactive’ waiting list – eligible to be on the waiting list but cannot be offered housing because more information is required to confirm their eligibility. Applications can be inactive for up to 24 months (five years for homeless applicants) before being cancelled.

Summary of active waiting list changes

Active Waiting List Activity



	Q3 2013	Q4 2013	Q1 2014	Q2 2014	Q3 2014
New & Reactivated Applications	5,886	4,853	4,556	4,189	3,222
Active Applications Inactivated	1,965	1,245	1,676	1,854	1,651
Active Applications Cancelled	1,100	931	827	1,837	1,105

Reasons for active applications being cancelled

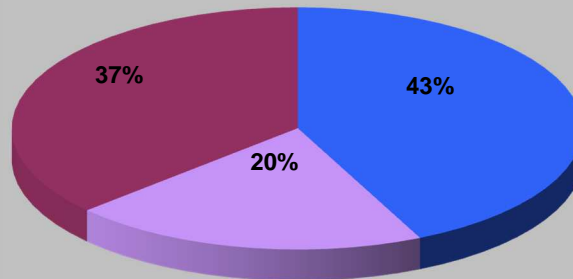
Applications will be cancelled at the applicant’s request, if the applicant is deceased, or if it is an incomplete web application.

Reasons for inactive applications being cancelled

If Housing Connections is unable to contact the household and the application has been inactive for two years (five years for homeless applicants) it can be cancelled.

Accessible Housing - demand for wheelchair-accessible units

Households requesting wheelchair-accessible units



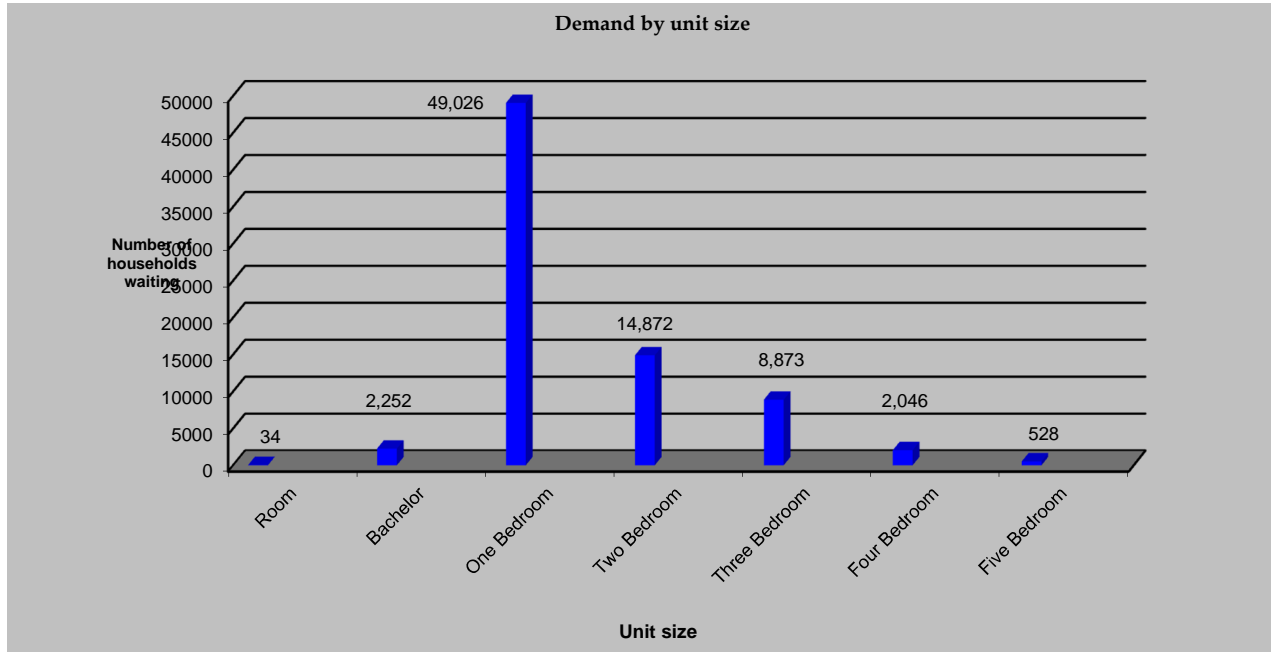
■ Households no dependents ■ Households with dependents ■ Seniors

Household type	Households requesting wheelchair-accessible units
Households with no dependents	245
Households with dependents	115
Seniors	210
Totals	570

A **wheelchair-accessible unit** has been modified to be accessible to an individual who uses a wheelchair or similar aid because of a physical disability. Accessible units may include wider doorways and hallways, lowered counter tops, grab bars, etc. Applicants waiting for wheel-chair accessible units are listed on the regular chronological waiting list.

Some units are modified to be accessible for individuals who are hearing or visually impaired. These households are listed on the general waiting list.

Summary of the active waiting list by unit size



The unit size indicated is the largest size selected by the applicant. It is possible for households to be listed for more than one unit size. For example, many single-member households will have both bachelor and one-bedroom units listed on their application, so it is counted as waiting for a one-bedroom.

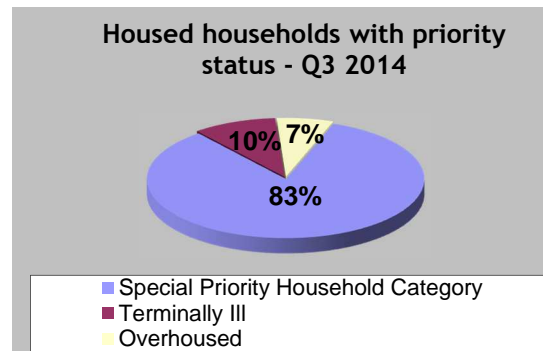
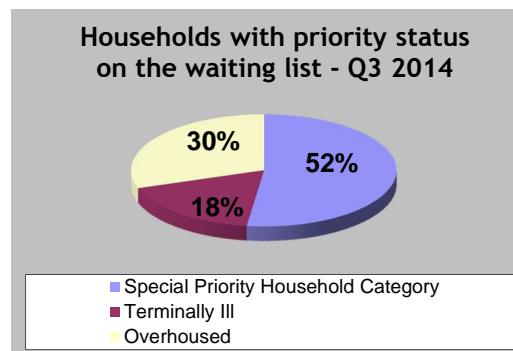
Unit Type	Room	Bachelor	One Bedroom	Two Bedroom	Three Bedroom	Four Bedroom	Five + Bedrooms	Total
Household no dependents	28	1,013	24,902	2,341	360	54	13	28,711
Household with dependents	0	2	474	11,761	8,487	1,991	514	23,229
Seniors	6	1,237	23,650	770	26	1	1	25,691
Totals	34	2,252	49,026	14,872	8,873	2,046	528	77,631

* This number is different than the total active waiting list on page 3 because some households with new applications have not yet selected their housing choices.

Households with priority (as of September 30, 2014)

Households with priority are ranked higher than the households on the chronological waiting list. The three priorities on the waiting list are:

1. Special Priority Household Category for victims of abuse, which is the first priority that is recognized by all housing providers.
2. Medical priority (terminally ill) for applicants who have less than two years to live (which is optional for housing providers).
3. Over housed subsidized households who are living in a unit that is larger than the unit size they qualify for. These households need to move to a smaller unit.



Households with priority on the waiting list

Priority type	Q3 2013	Q4 2013	Q1 2014	Q2 2014	Q3 2014
Special Priority Household Category	1,568	1,568	1,629	1,680	1,577
Terminally ill	509	510	524	532	536
Over housed	830	843	811	914	886
Total	2,830	2,921	2,964	3,126	2,999

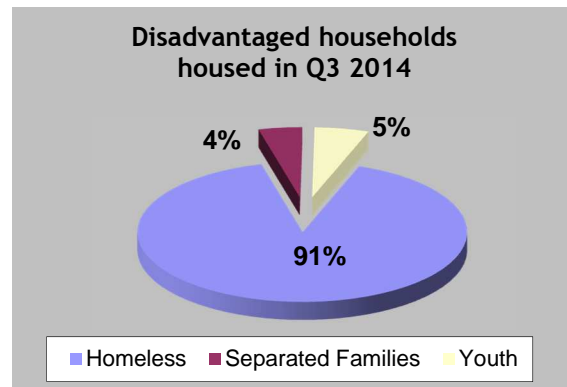
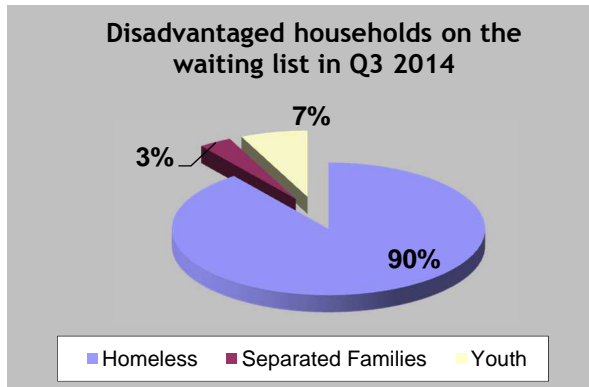
* The increase to the number of over housed households on the waiting list represents the Toronto Community Housing over housed tenants that moved to the centralized waiting list in Q1.

Housed households with priority status

Priority type	Q3 2013	Q4 2013	Q1 2014	Q2 2014	Q3 2014
Special Priority Household Category	248	236	256	268	265
Terminally Ill	37	38	32	35	31
Over housed	15	24	12	21	9
Total	300	298	300	324	305

Disadvantaged households (as of September 30, 2014)

In addition to the priorities, housing providers offer one-in-every-seven vacancies to homeless applicants, separated families with a child in care of Children’s Aid Society, or youth who are 16/17 years old at the time of applying.



Disadvantaged households on the waiting list

Household type	Q3 2013	Q4 2013	Q1 2014	Q2 2014	Q3 2014
Homeless*	5,060	5,033	5,041	4,820	1,719
Separated families	60	69	67	68	65
Youth	136	135	141	133	129
Total	5,256	5,237	5,249	5,021	1,913

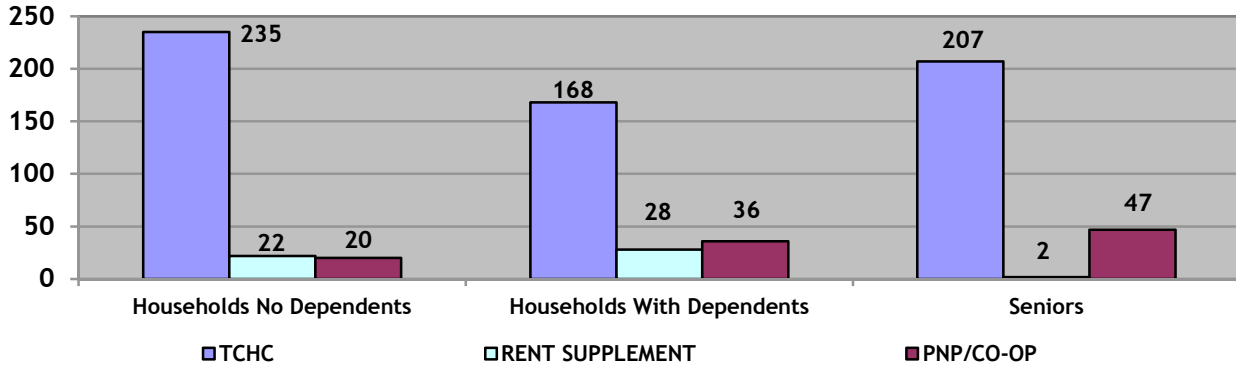
Disadvantaged households housed

Household type	Q3 2013	Q4 2013	Q1 2014	Q2 2014	Q3 2014
Homeless*	109	96	99	115	85
Separated families	1	0	2	3	4
Youth	5	5	4	5	5
Total	115	101	105	123	94

* This count does not include Special Priority Household Category living in shelters because those households are represented in the Special Priority Household Category totals.

Total housed using TAWL (as of September 30, 2014)

3rd Quarter Housed Totals



TCHC	Room	Bach	1B	2B	3B	4B	5B+	Total
Households no Dependents	12	139	68	16	0	0	0	235
Households with Dependents	0	1	6	98	56	7	0	168
Seniors	2	140	63	2	0	0	0	207
Total	14	280	137	116	56	7	0	610

Rent Supplement	Room	Bach	1B	2B	3B	4B	5B+	Total
Households no Dependents	0	0	20	2	0	0	0	22
Households with Dependents	0	0	0	24	4	0	0	28
Seniors	0	0	0	2	0	0	0	2
Total	0	0	20	28	4	0	0	52

PNP and CO-OP	Room	Bach	1B	2B	3B	4B	5B+	Total
Households no Dependents	0	6	11	3	0	0	0	20
Households with Dependents	0	0	1	28	6	1	0	36
Seniors	0	8	36	3	0	0	0	47
Total	0	14	48	34	6	1	0	103

GRAND TOTAL	14	294	205	178	66	8	0	765
--------------------	-----------	------------	------------	------------	-----------	----------	----------	------------

TCHC = Toronto Community Housing Corporation PNP = Private Non-Profit Housing Provider CO-OP = Co-operative Housing Provider
 TAWL = Toronto Social Housing Connections Application Waiting List