



Quarterly
Activity
Report

1st Quarter 2009

January 1st 2009 - March 31st 2009

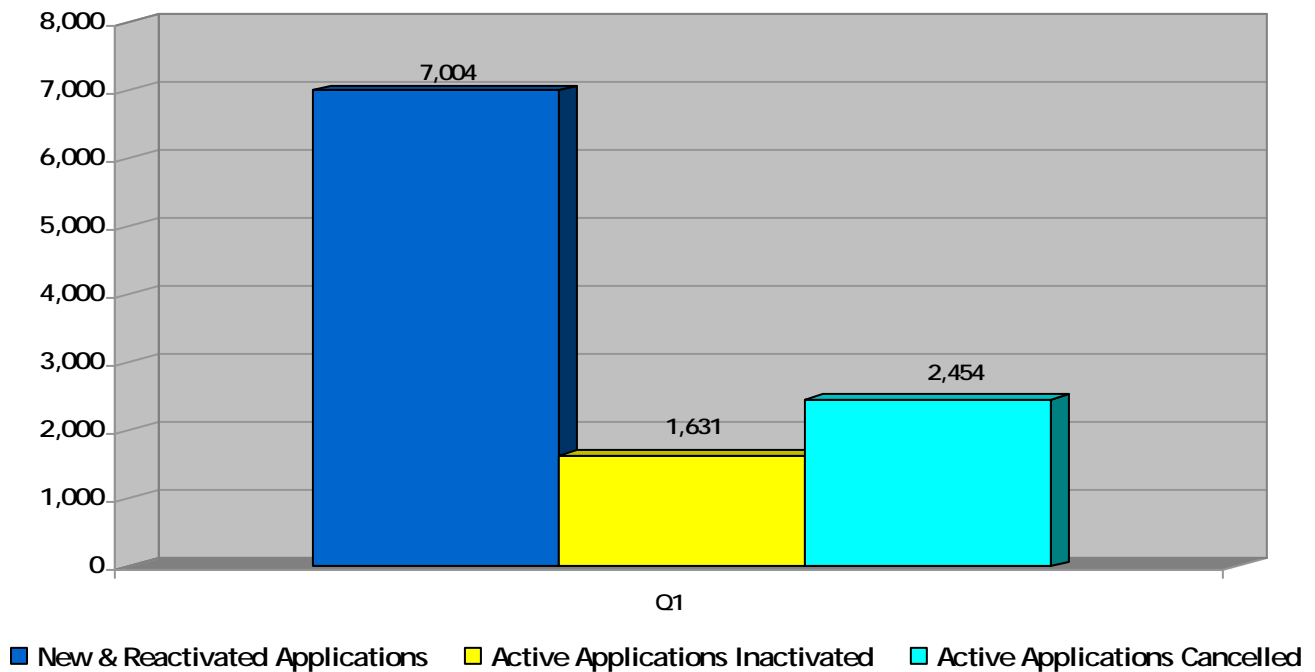
SUMMARY OF ACTIVITIES

Total **number of people** on Housing Connections centralized waiting list for social housing is **128,807** as of March 31, 2009. The rest of the numbers in this Statistical Report refer to household applications that may have several people on their application.

This number includes **25,435** children under the age of 17.

This number includes **10,889** single parents.

Active List Changes
1st Quarter Active Activities 2009

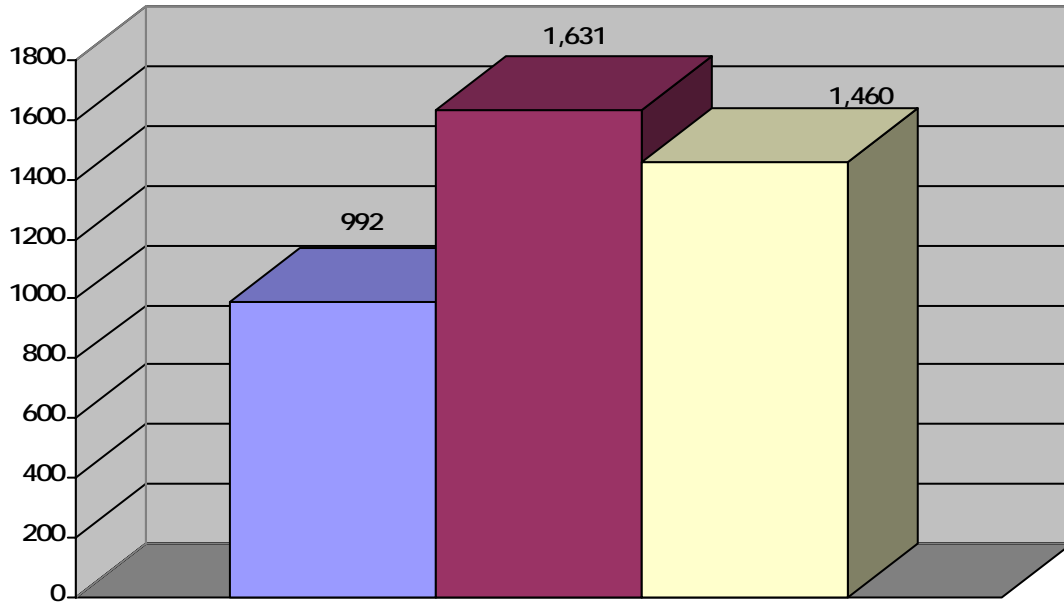


Active	1st Quarter
New & Reactivated Applications	7004
Active Applications Inactivated	1,631
Active Applications Cancelled	2,454
Active Waiting List	53,901

'Active' waiting list – on waiting list and ready to be housed

SUMMARY OF ACTIVITIES

**Inactive List Changes
1st Quarter Inactive Activities 2009**

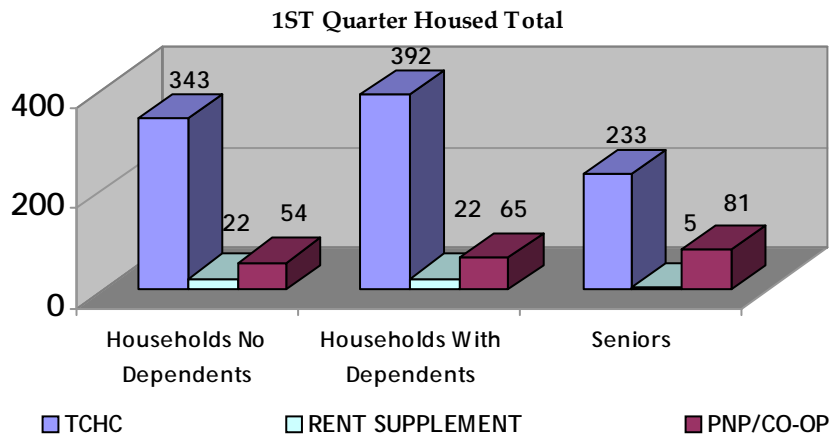


■ Reactivated Applications ■ Active Applications Inactivated □ Inactive Applications Cancelled

Inactive	1st Quarter
Reactivated Applications	992
Active Applications Inactivated	1,631
Inactive Applications Cancelled	1,460
Inactive Waiting List	13,962

Waiting List	1st Quarter
Total Waiting List As At March 31, 2009	67,863

'Inactive' waiting list – on waiting list but cannot be housed for any number of reasons i.e. waiting for documents, haven't heard from applicant, mail returned, no response to requests for confirmation of interest or housing offer withdrawn. Applications can be inactive for up to 24 months (five years for homeless applicants) before being cancelled.

FIRST QUARTER 2009 HOUSED ACTIVITIES USING TAWL


TCHC	Room	Bach	1B	2B	3B	4B	5B+	Total
Households no Dependents	7	141	152	37	4	2	0	343
Households with Dependents	1	4	14	198	133	32	10	392
Seniors	1	148	79	4	1	0	0	233
Total	9	293	245	239	138	34	10	968

Rent Supplement	Room	Bach	1B	2B	3B	4B	5B+	Total
Households no Dependents	0	4	14	4	0	0	0	22
Households with Dependents	0	0	0	17	4	0	1	22
Seniors	0	0	5	0	0	0	0	5
Total	0	4	19	21	4	0	1	49

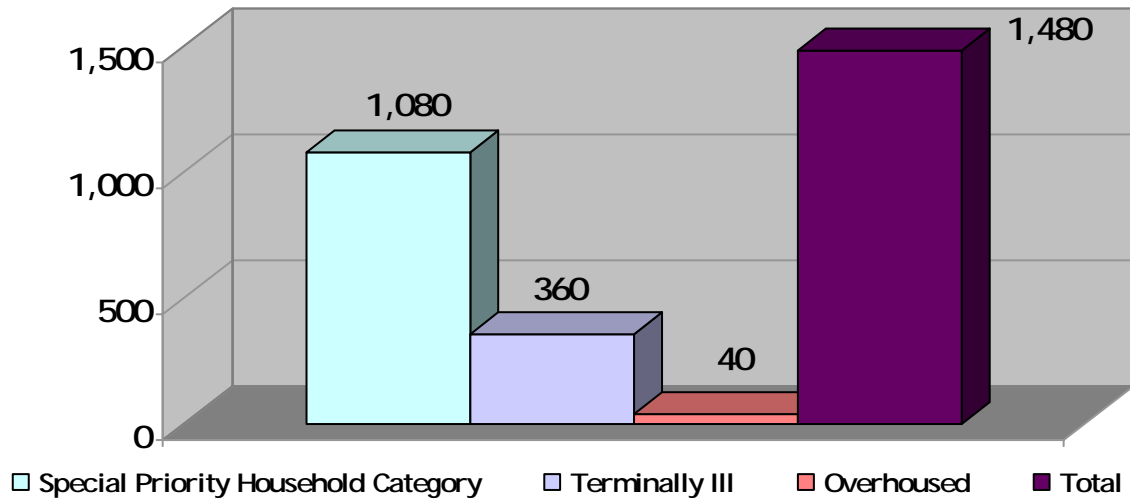
PNP and CO-OP	Room	Bach	1B	2B	3B	4B	5B+	Total
Households no Dependents	0	17	33	3	1	0	0	54
Households with Dependents	0	0	2	51	12	0	0	65
Seniors	0	20	58	3	0	0	0	81
Total	0	37	93	57	13	0	0	200

GRAND TOTAL	9	334	357	317	155	34	11	1,217
--------------------	----------	------------	------------	------------	------------	-----------	-----------	--------------

TCHC = Toronto Community Housing Corporation PNP = Private Non-Profit Housing Provider CO-OP = Co-operative Housing Provider

HOUSEHOLDS WITH PRIORITY ON THE ACTIVE WAITING LIST

Households with Priority on the Active Waiting List Total



Type of Priority	Households no Dependents	Households with Dependents	Senior	Total
Special Priority Household Category	312	701	67	1,080
Terminally III	138	107	115	360
Overhoused	17	9	14	40
Total	467	817	196	1,480

Special Priority Housing Category – meets the criteria for priority so that abused can separate from abuser.

Terminally III – less than two years to live.

Overhoused – Tenants who are housed in a unit larger than they qualify for under the provincial occupancy standards.

HOUSEHOLDS WITH PRIORITY - HOUSED IN Q1

TCHC	Special Priority Household Category	Terminally III	Overhoused	Total
Households no Dependents	81	10	0	91
Households with Dependents	126	5	1	132
Seniors	18	5	1	24
Total	225	20	2	247

Rent Supplement	Special Priority Household Category	Terminally III	Overhoused	Total
Households no Dependents	7	0	0	7
Households With Dependents	13	0	0	13
Seniors	2	0	0	2
Total	22	0	0	22

PNP/CO-OP	Special Priority Household Category	Terminally III	Overhoused	Total
Households no Dependents	24	1	0	25
Households with Dependents	50	0	0	50
Seniors	5	2	0	7
Total	79	3	0	82

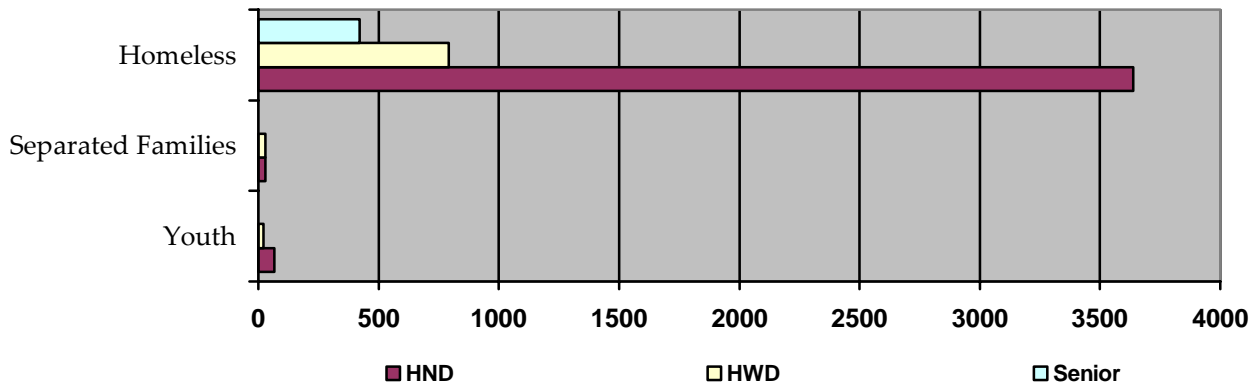
Grand Total	326	23	2	351
--------------------	------------	-----------	----------	------------

TCHC = Toronto Community Housing Corporation

PNP = Private Non-Profit Housing Provider

CO-OP = Co-operative Housing Provider

DISADVANTAGED HOUSEHOLDS ON THE ACTIVE WAITING LIST



Type of Disadvantaged Household	Households no Dependents	Households with Dependents	Senior	Total
Homeless *	3,637	792	421	4,850
Separated Families	29	29	0	58
Youth	66	22	0	88
Total	3,732	843	421	4,996

* This count does not include Special Priority Household Category living in Shelters

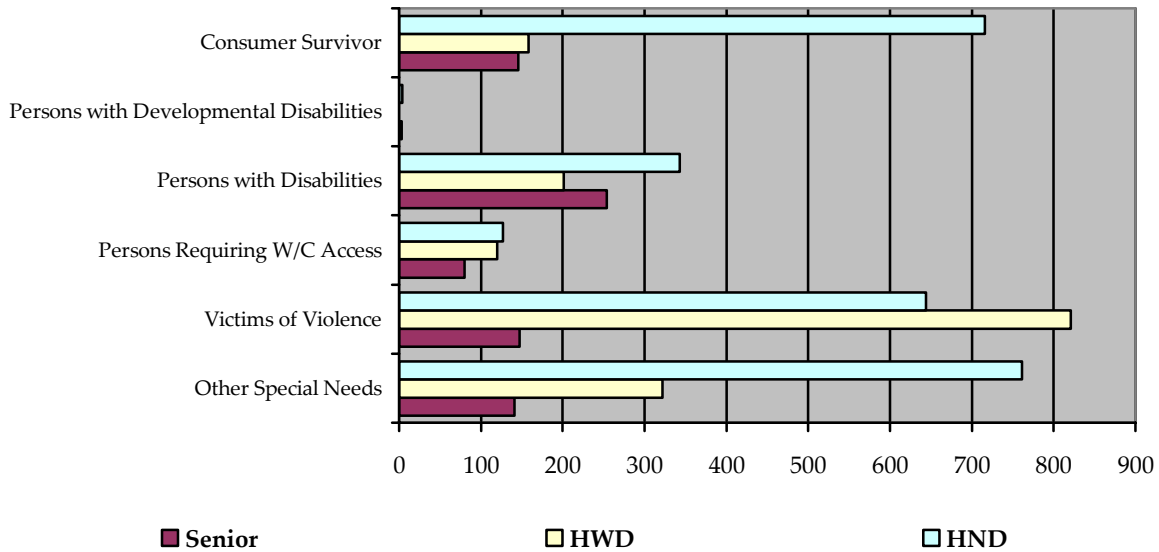
* This count includes Homeless Newcomers

HND = Households with no dependents

HWD = Households with dependents

Senior = No-Dependent Households where at least one of the household members is 59+

HOUSEHOLDS ON THE ACTIVE WAITING LIST WITH SPECIAL NEEDS



Type of Special Needs Household	Households no Dependents	Households with Dependents	Senior	Total
Consumer Survivor	716	158	146	1,020
Persons With Developmental Disabilities	4	0	3	7
Persons with Disabilities	343	201	254	798
Persons Requiring W/C Access	127	120	80	327
Victims of Violence *	644	821	147	1,612
Other Special Needs	761	322	141	1,224
Total	2,595	1,622	771	4,988

* This count includes households where Special Priority Household Category has been assigned.

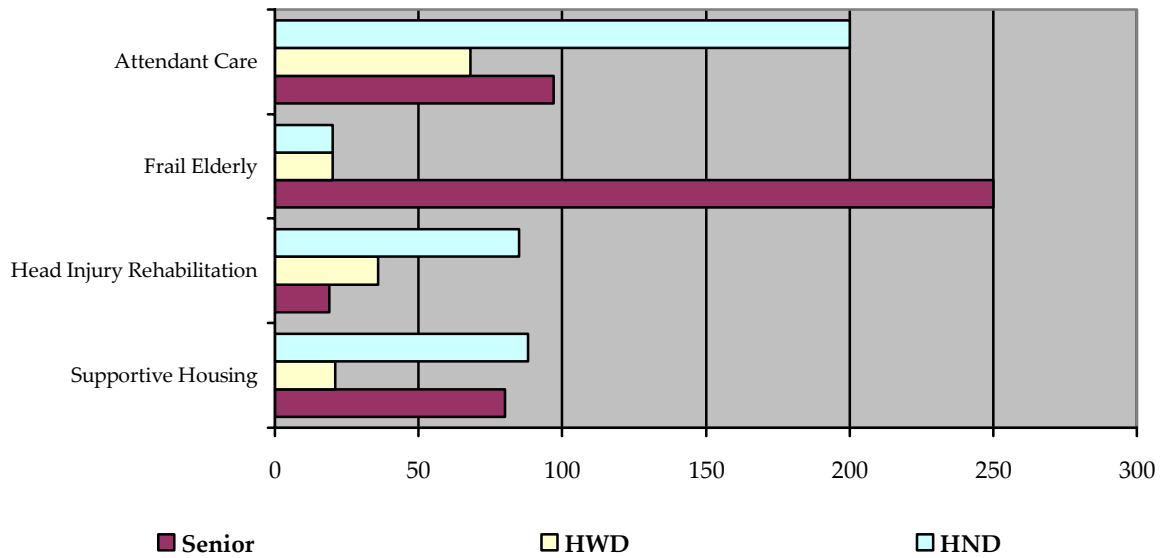
W/C = Wheelchair

HND = Households with no dependents

HWD = Households with dependents

Senior = No-Dependent Households where at least one of the household members is 59+

HOUSEHOLDS ON THE ACTIVE WAITING LIST REQUIRING SUPPORTIVE HOUSING



Type of Supportive Housing	Households no Dependents	Households with Dependents	Senior	Total
Attendant Care	200	68	97	365
Frail Elderly	20	20	250	290
Head Injury Rehabilitation	85	36	19	140
Supportive Housing	88	21	80	189
Total	393	145	446	984

HND = Households with no dependents

HWD = Households with dependents

Senior = No-Dependent Households where at least one of the household members is 59+

HOUSED HOUSEHOLDS WITH SPECIAL HOUSING REQUIREMENTS

TCHC	Homeless	Separated Family	Youth	Supportive Housing	Special Needs	Total
Households no Dependents	69	2	5	6	38	120
Households with Dependents	61	0	4	1	29	95
Seniors	35	0	0	8	16	59
Total	165	2	9	15	83	274

Rent Supplement	Homeless	Separated Family	Youth	Supportive Housing	Special Needs	Total
Households no Dependents	3	0	0	0	1	4
Households With Dependents	2	0	0	0	1	3
Seniors	0	0	0	0	1	1
Total	5	0	0	0	3	8

PNP/CO-OP	Homeless	Separated Family	Youth	Supportive Housing	Special Needs	Total
Households no Dependents	6	0	0	0	6	12
Households with Dependents	5	0	0	0	6	11
Seniors	6	0	0	4	5	15
Total	17	0	0	4	17	38

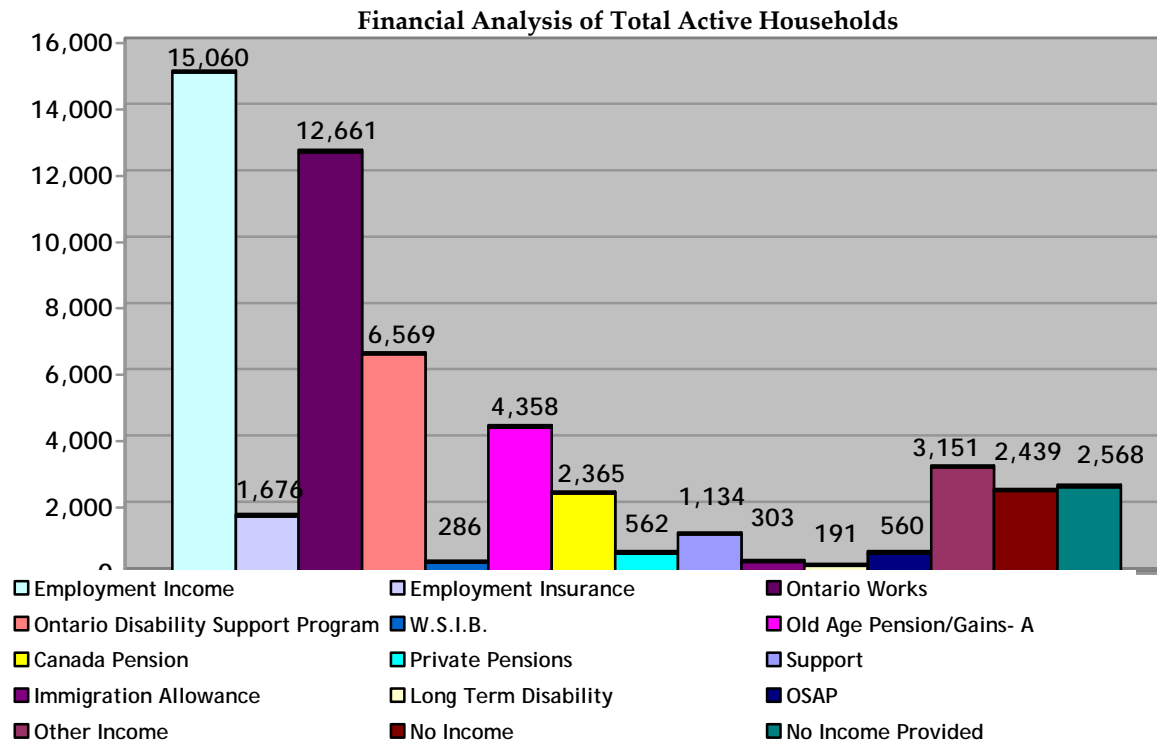
Grand Total	187	2	9	19	103	320
--------------------	------------	----------	----------	-----------	------------	------------

TCHC = Toronto Community Housing Corporation

PNP = Private Non-Profit Housing Provider

CO-OP = Co-operative Housing Provider

MAJOR INCOME SOURCE BY ACTIVE HOUSEHOLD



Income Type	Households no Dependents	Households with Dependents	Senior	Total
Employment Income	5,781	6,684	2,595	15,060
Employment Insurance	615	869	192	1,676
Ontario Works	5,819	5,780	1,062	12,661
Ontario Disability Support Program	3,714	1,310	1,545	6,569
W.S.I.B.	130	77	79	286
Old Age Pension/Gains- A	110	225	4,023	4,358
Canada Pension	467	143	1,755	2,365
Private Pensions	69	44	449	562
Support	119	235	780	1,134
Immigration Allowance	104	190	9	303
Long Term Disability	112	28	51	191
OSAP	284	263	13	560
Other Income	1,122	1,001	1,028	3,151
No Income	1,303	657	479	2,439
No Income Provided	1,049	832	687	2,568
Total	20,798	18,338	14,747	53,883

W.S.I.B = Workplace Safety Insurance Board

TIME ON ACTIVE WAITING LIST BY HOUSEHOLD TYPE

	< 1 Year			1 up to 3 Years			3 up to 5 Years			5 up to 7 Years			7 up to 10 Years			> 10 Years		
	HND	HWD	SEN	HND	HWD	SEN	HND	HWD	SEN	HND	HWD	SEN	HND	HWD	SEN	HND	HWD	SEN
Room	8	0	1	7	0	0	3	0	0	1	0	0	0	0	0	0	0	0
Bachelor	365	7	238	571	9	261	145	4	98	31	0	22	19	1	12	1	0	3
One Bedroom	4,780	173	2,663	6,324	249	4,068	3,064	223	2,867	1,534	151	1,841	1,121	141	1,382	564	79	761
Two Bedroom	325	2,187	79	440	3,167	93	252	1,959	46	136	1,040	47	93	732	50	46	438	44
Three Bedroom	45	1,147	10	50	1,714	3	33	1,271	1	33	939	2	32	718	2	14	446	0
Four Bedroom	6	179	2	4	241	1	2	220	1	6	154	0	3	133	0	3	89	0
Five Bedroom	3	24	0	2	32	0	1	20	0	1	10	0	0	8	0	0	2	0
Total	5,532	3,717	2,993	7,398	5,412	4,426	3,500	3,697	3,013	1,742	2,294	1,912	1,268	1,733	1,446	628	1,054	808

HND = Households with no dependents

HWD = Households with dependents

SEN = No-Dependent Households where at least one of the household members is 59+