



Quarterly
Activity
Report

4th Quarter 2008

October 1st, 2008 - December 31st, 2008

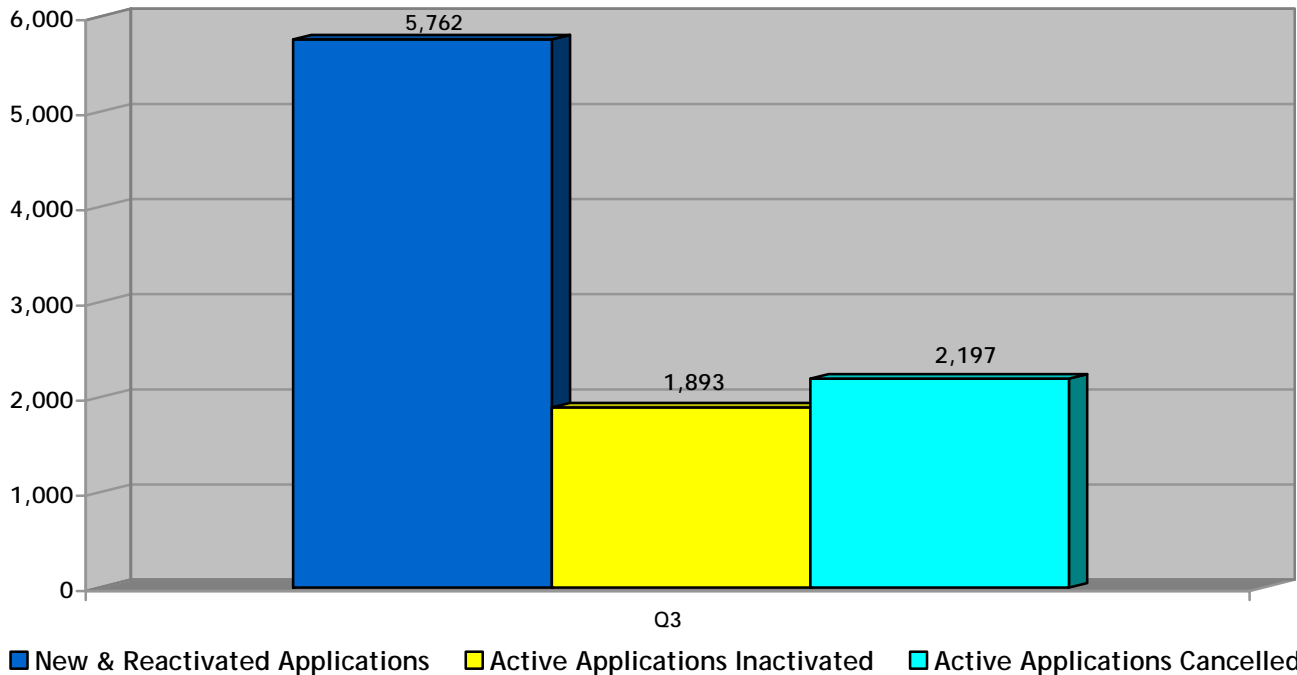
SUMMARY OF ACTIVITIES

Total **number of people** on Housing Connections centralized waiting list for social housing is **127,009** as of December 31, 2008. The rest of the numbers in this Statistical Report refer to household applications that may have several people on their application.

This number includes **24,727** children under the age of 17.

This number includes **10,570** single parents.

Active List Changes
4th Quarter Active Activities 2008

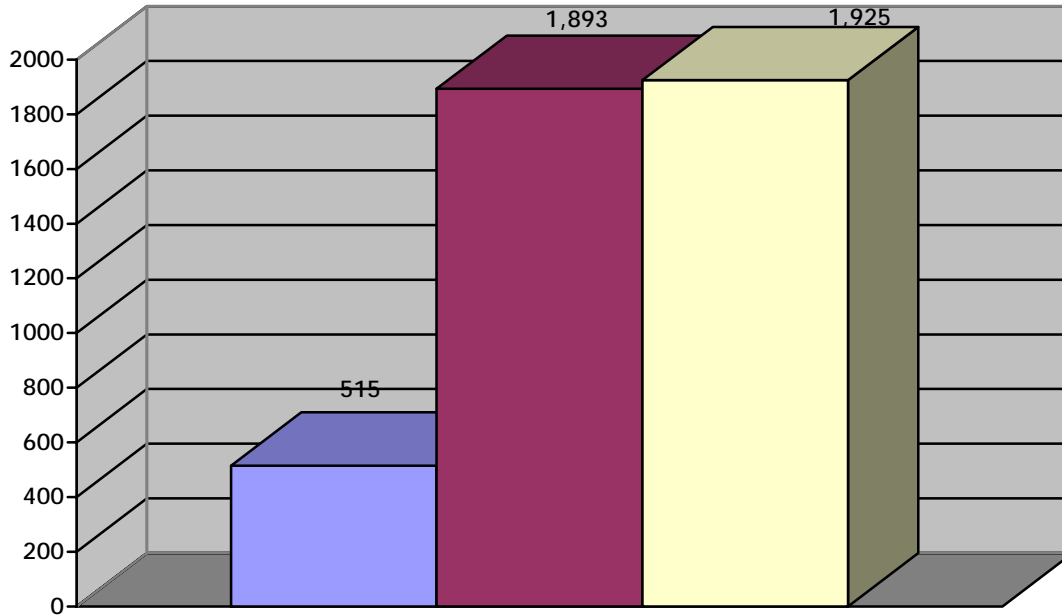


Active	4 th Quarter
New & Reactivated Applications	5,762
Active Applications Inactivated	1,893
Active Applications Cancelled	2,197
Active Waiting List	52,257

'Active' waiting list – on waiting list and ready to be housed

SUMMARY OF ACTIVITIES

**Inactive List Changes
4th Quarter Inactive Activities 2008**



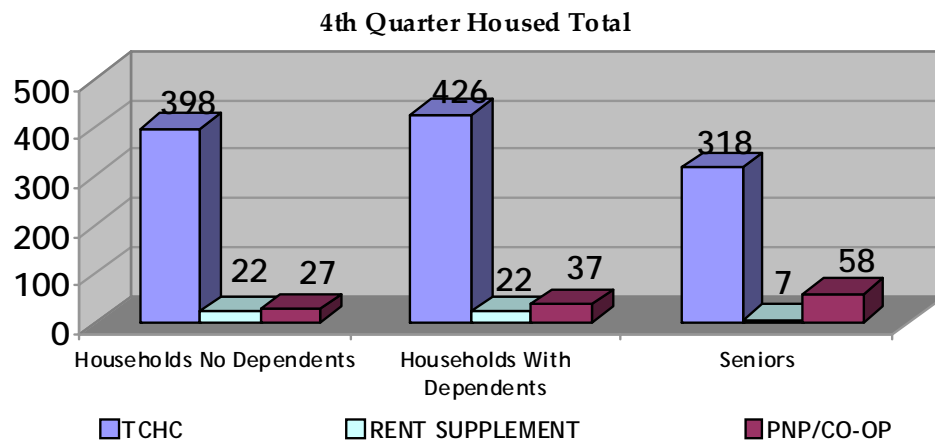
■ Reactivated Applications
 ■ Active Applications Inactivated
 ■ Inactive Applications Cancelled

Inactive	4th Quarter
Reactivated Applications	515
Active Applications Inactivated	1,893
Inactive Applications Cancelled	1,925
Inactive Waiting List	14,343

Waiting List	4th Quarter
Total Waiting List As At December 31, 2008	66,600

'Inactive' waiting list – on waiting list but cannot be housed for any number of reasons i.e. waiting for documents, haven't heard from applicant, mail returned, no response to requests for confirmation of interest or housing offer withdrawn. Applications can be inactive for up to 24 months (five years for homeless applicants) before being cancelled.

FOURTH QUARTER 2008 HOUSED ACTIVITIES USING TAWL



TCHC	Room	Bach	1B	2B	3B	4B	5B+	Total
Households no Dependents	28	132	186	43	8	1	0	398
Households with Dependents	0	5	22	205	166	23	5	426
Seniors	0	224	87	6	1	0	0	318
Total	28	361	295	254	175	24	5	1,142

Rent Supplement	Room	Bach	1B	2B	3B	4B	5B+	Total
Households no Dependents	0	1	16	4	0	1	0	22
Households with Dependents	0	0	0	15	6	1	0	22
Seniors	0	0	5	2	0	0	0	7
Total	0	1	21	21	6	2	0	51

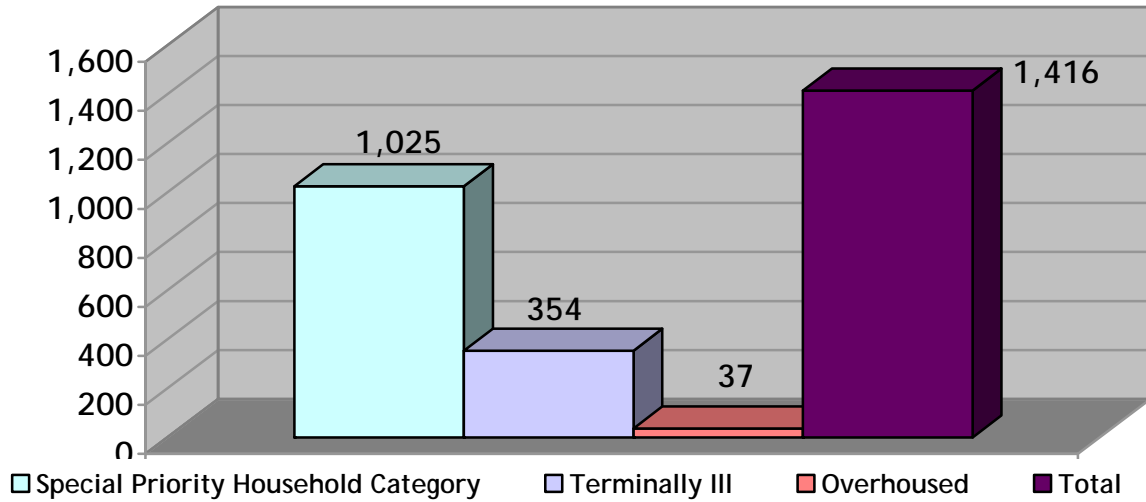
PNP and CO-OP	Room	Bach	1B	2B	3B	4B	5B+	Total
Households no Dependents	0	6	17	3	1	0	0	27
Households with Dependents	0	0	2	21	12	2	0	37
Seniors	0	10	46	2	0	0	0	58
Total	0	16	65	26	13	2	0	122

GRAND TOTAL	28	378	381	301	194	28	5	1,315
--------------------	-----------	------------	------------	------------	------------	-----------	----------	--------------

TCHC = Toronto Community Housing Corporation PNP = Private Non-Profit Housing Provider CO-OP = Co-operative Housing Provider

HOUSEHOLDS WITH PRIORITY ON THE ACTIVE WAITING LIST

Households with Priority on the Active Waiting List Total



Type of Priority	Households no Dependents	Households with Dependents	Senior	Total
Special Priority Household Category	279	677	69	1,025
Terminally III	134	106	114	354
Overhoused	14	10	13	37
Total	427	793	196	1,416

Special Priority Housing Category – meets the criteria for priority so that abused can separate from abuser.

Terminally III – less than two years to live.

Overhoused – Tenants who are housed in a unit larger than they qualify for under the provincial occupancy standards.

HOUSEHOLDS WITH PRIORITY - HOUSED IN Q4

TCHC	Special Priority Household Category	Terminally III	Overhoused	Total
Households no Dependents	112	14	0	126
Households with Dependents	159	8	0	167
Seniors	31	12	1	44
Total	302	34	1	337

Rent Supplement	Special Priority Household Category	Terminally III	Overhoused	Total
Households no Dependents	8	4	0	12
Households With Dependents	10	0	0	10
Seniors	1	2	1	4
Total	19	6	1	26

PNP/CO-OP	Special Priority Household Category	Terminally III	Overhoused	Total
Households no Dependents	14	1	0	15
Households with Dependents	26	0	0	26
Seniors	10	5	0	15
Total	50	6	0	56

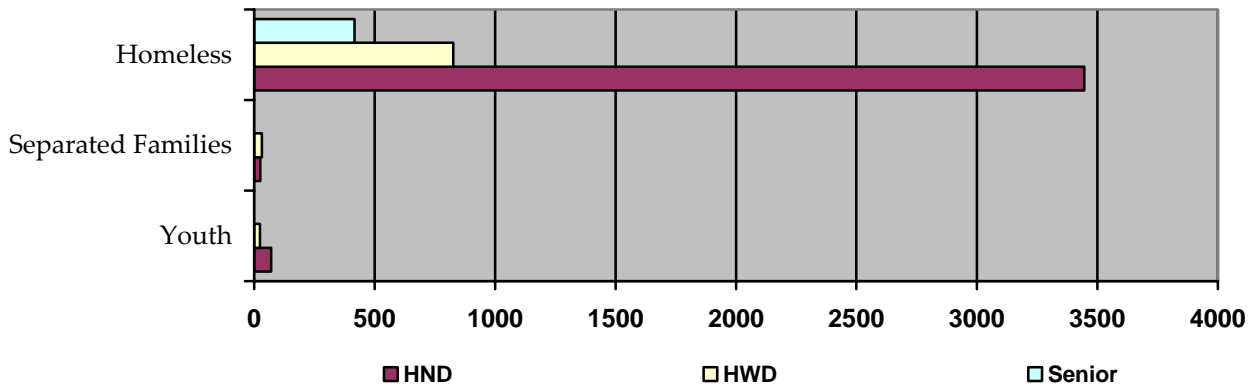
Grand Total	371	46	2	419
--------------------	------------	-----------	----------	------------

TCHC = Toronto Community Housing Corporation

PNP = Private Non-Profit Housing Provider

CO-OP = Co-operative Housing Provider

DISADVANTAGED HOUSEHOLDS ON THE ACTIVE WAITING LIST



Type of Disadvantaged Household	Households no Dependents	Households with Dependents	Senior	Total
Homeless *	3,446	827	416	4,689
Separated Families	25	32	0	57
Youth	70	24	1	95
Total	3,541	883	417	4,841

* This count does not include Special Priority Household Category living in Shelters

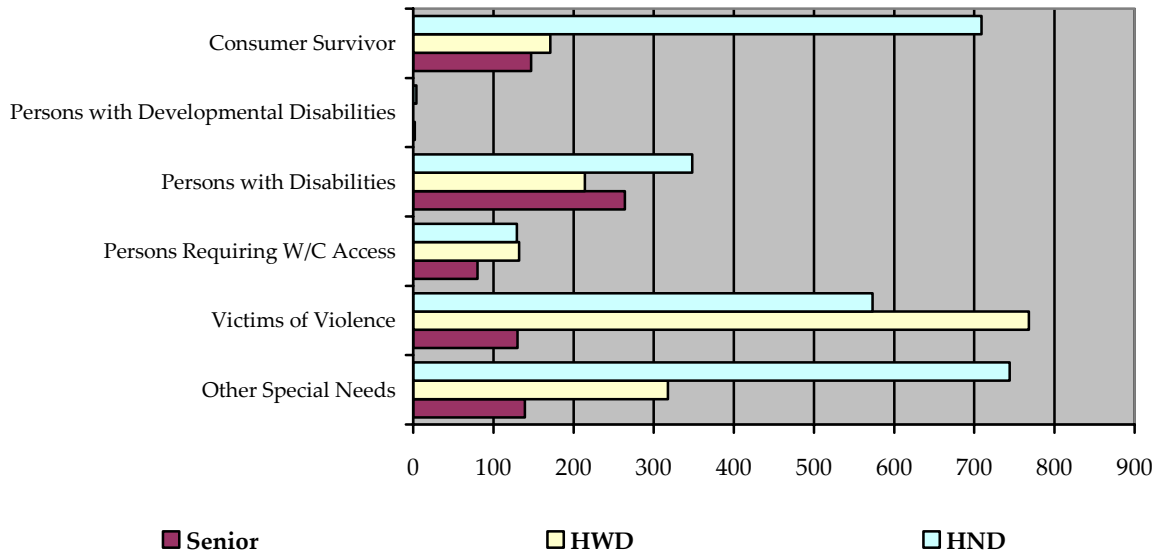
* This count includes Homeless Newcomers

HND = Households with no dependents

HWD = Households with dependents

Senior = No-Dependent Households where at least one of the household members is 59+

HOUSEHOLDS ON THE ACTIVE WAITING LIST WITH SPECIAL NEEDS



Type of Special Needs Household	Households no Dependents	Households with Dependents	Senior	Total
Consumer Survivor	709	171	147	1,027
Persons With Developmental Disabilities	4	0	2	6
Persons with Disabilities	348	214	264	826
Persons Requiring W/C Access	129	132	80	341
Victims of Violence *	573	768	130	1,471
Other Special Needs	744	318	139	1,201
Total	2,507	1,603	762	4,872

* This count includes households where Special Priority Household Category has been assigned.

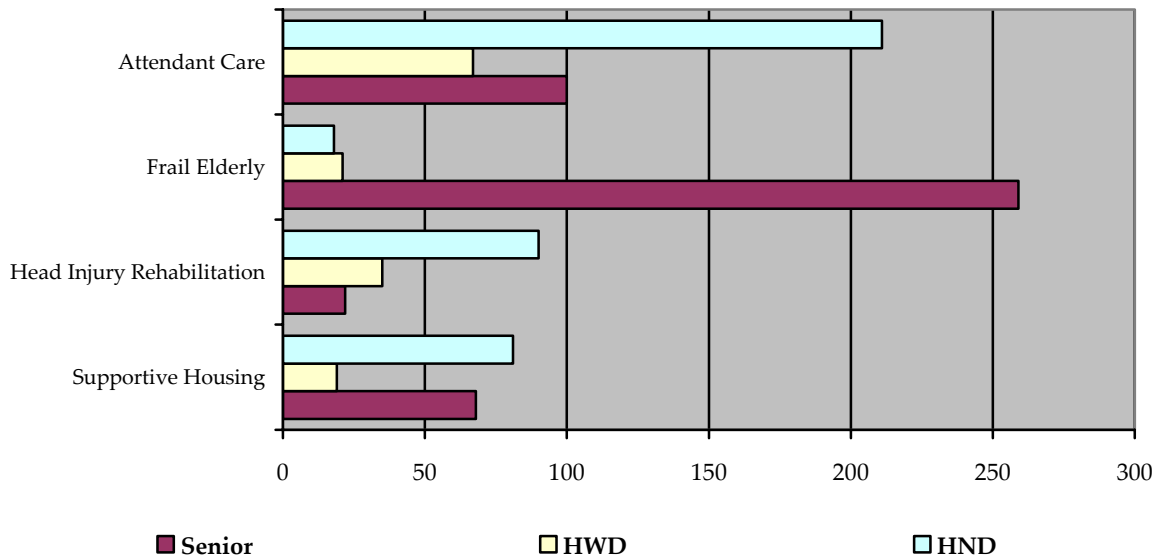
W/C = Wheelchair

HND = Households with no dependents

HWD = Households with dependents

Senior = No-Dependent Households where at least one of the household members is 59+

HOUSEHOLDS ON THE ACTIVE WAITING LIST REQUIRING SUPPORTIVE HOUSING



Type of Supportive Housing	Households no Dependents	Households with Dependents	Senior	Total
Attendant Care	211	67	100	378
Frail Elderly	18	21	259	298
Head Injury Rehabilitation	90	35	22	147
Supportive Housing	81	19	68	168
Total	400	142	449	991

HND = Households with no dependents

HWD = Households with dependents

Senior = No-Dependent Households where at least one of the household members is 59+

HOUSED HOUSEHOLDS WITH SPECIAL HOUSING REQUIREMENTS

TCHC	Homeless	Separated Family	Youth	Supportive Housing	Special Needs	Total
Households no Dependents	62	0	1	1	38	102
Households with Dependents	42	2	1	1	28	74
Seniors	52	0	0	5	11	68
Total	156	2	2	7	77	244

Rent Supplement	Homeless	Separated Family	Youth	Supportive Housing	Special Needs	Total
Households no Dependents	3	0	0	0	2	5
Households With Dependents	3	0	0	0	3	6
Seniors	1	0	0	0	1	2
Total	7	0	0	0	6	13

PNP/CO-OP	Homeless	Separated Family	Youth	Supportive Housing	Special Needs	Total
Households no Dependents	2	0	0	0	5	7
Households with Dependents	1	0	0	0	0	1
Seniors	4	0	0	1	1	6
Total	7	0	0	1	6	14

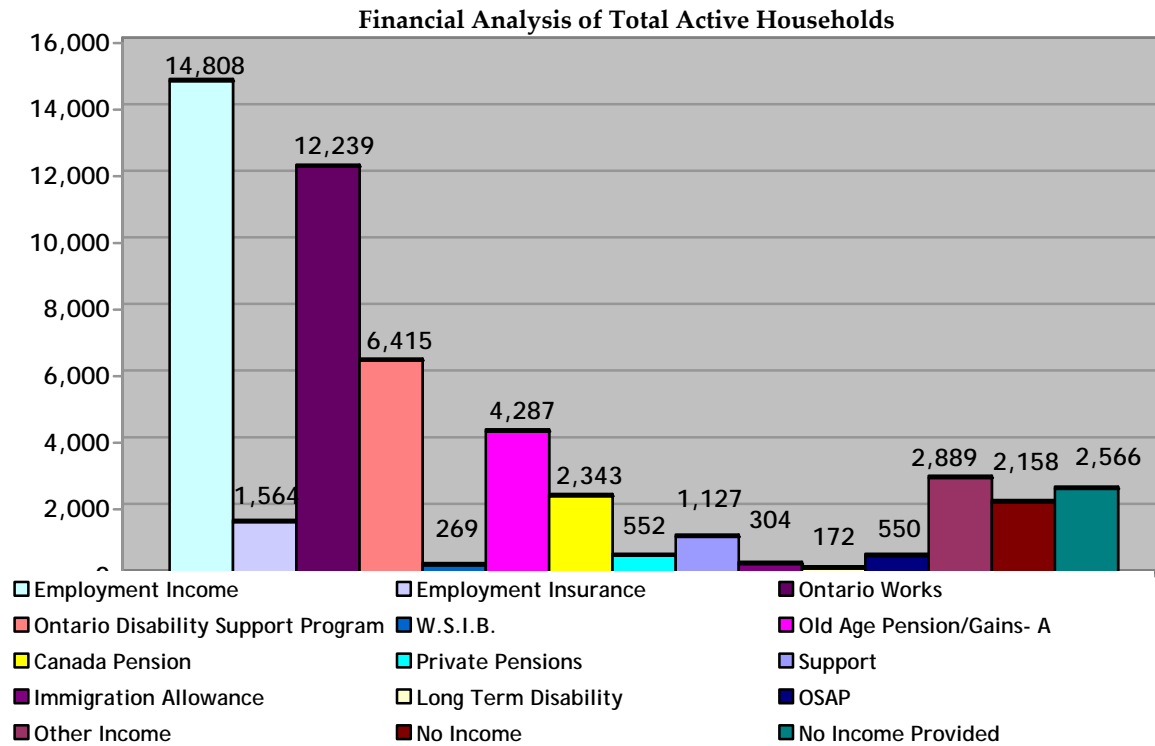
Grand Total	170	2	2	8	89	271
--------------------	------------	----------	----------	----------	-----------	------------

TCHC = Toronto Community Housing Corporation

PNP = Private Non-Profit Housing Provider

CO-OP = Co-operative Housing Provider

MAJOR INCOME SOURCE BY ACTIVE HOUSEHOLD



Income Type	Households no Dependents	Households with Dependents	Senior	Total
Employment Income	5,686	6,604	2,518	14,808
Employment Insurance	577	807	180	1,564
Ontario Works	5,507	5,674	1,058	12,239
Ontario Disability Support Program	3,625	1,270	1,520	6,415
W.S.I.B.	119	71	79	269
Old Age Pension/Gains- A	107	223	3,957	4,287
Canada Pension	469	149	1,725	2,343
Private Pensions	68	39	445	552
Support	109	224	794	1,127
Immigration Allowance	107	187	10	304
Long Term Disability	98	23	51	172
OSAP	279	262	9	550
Other Income	1,010	930	949	2,889
No Income	1,132	577	449	2,158
No Income Provided	1,047	817	702	2,566
Total	19,940	17,857	14,446	52,243

W.S.I.B = Workplace Safety Insurance Board

TIME ON ACTIVE WAITING LIST BY HOUSEHOLD TYPE

	< 1 Year			1 up to 3 Years			3 up to 5 Years			5 up to 7 Years			7 up to 10 Years			> 10 Years		
	HND	HWD	SEN	HND	HWD	SEN	HND	HWD	SEN	HND	HWD	SEN	HND	HWD	SEN	HND	HWD	SEN
Room	10	0	1	4	0	1	3	0	0	1	0	0	0	0	0	0	0	0
Bachelor	417	6	229	516	8	260	137	6	96	34	1	20	14	1	10	1	0	4
One Bedroom	4,328	168	2,524	6,258	257	4,101	2,950	226	2,846	1,536	157	1,825	1,107	140	1,334	544	80	728
Two Bedroom	322	2,068	55	412	3,155	93	247	1,888	52	131	1,010	54	91	723	52	47	437	45
Three Bedroom	34	1,040	4	44	1,733	1	37	1,251	1	32	936	2	31	712	2	11	428	0
Four Bedroom	3	164	1	4	250	1	4	199	1	5	157	0	4	137	1	3	85	0
Five Bedroom	1	20	0	2	41	0	1	23	0	1	10	0	0	11	0	0	4	0
Total	5,115	3,466	2,814	7,240	5,444	4,457	3,379	3,593	2,996	1,740	2,271	1,901	1,247	1,724	1,399	606	1,034	777

HND = Households with no dependents

HWD = Households with dependents

SEN = No-Dependent Households where at least one of the household members is 59+