



Quarterly  
Activity  
Report

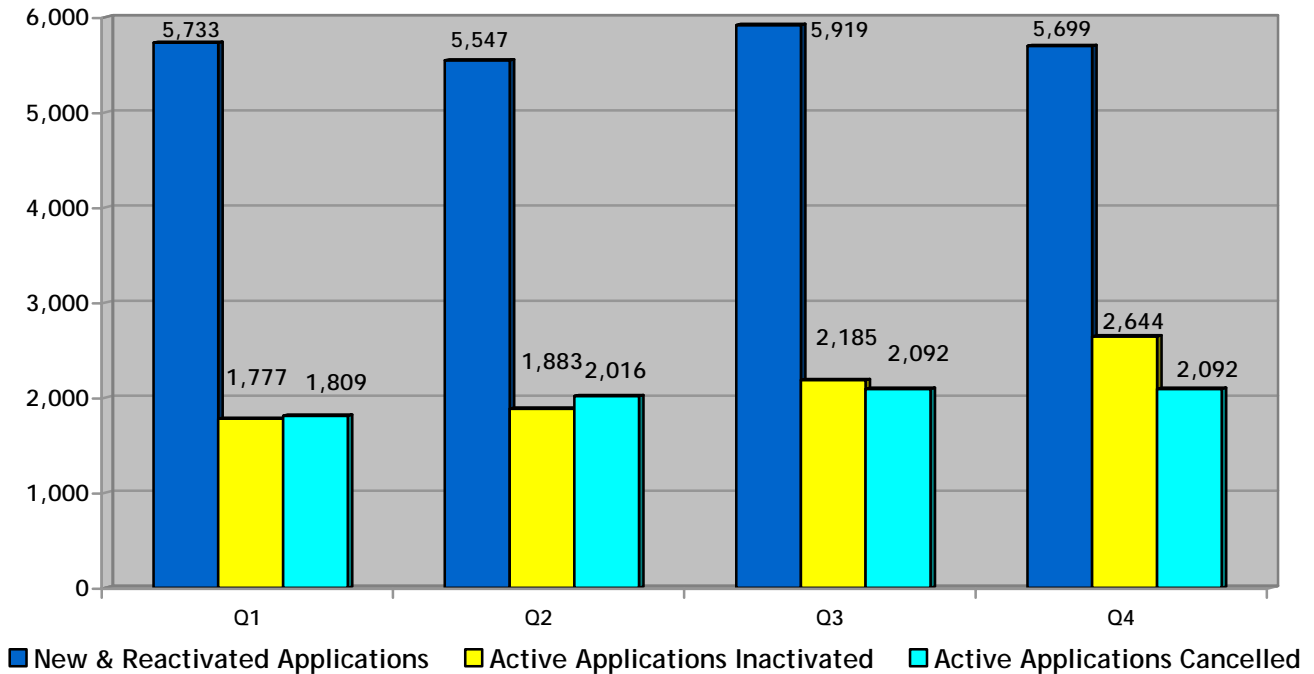
---

4<sup>th</sup> Quarter 2007

October 1st, 2007 - December 31st, 2007

## SUMMARY OF ACTIVITIES

Active List Changes  
4th Quarter Active Activities 2007



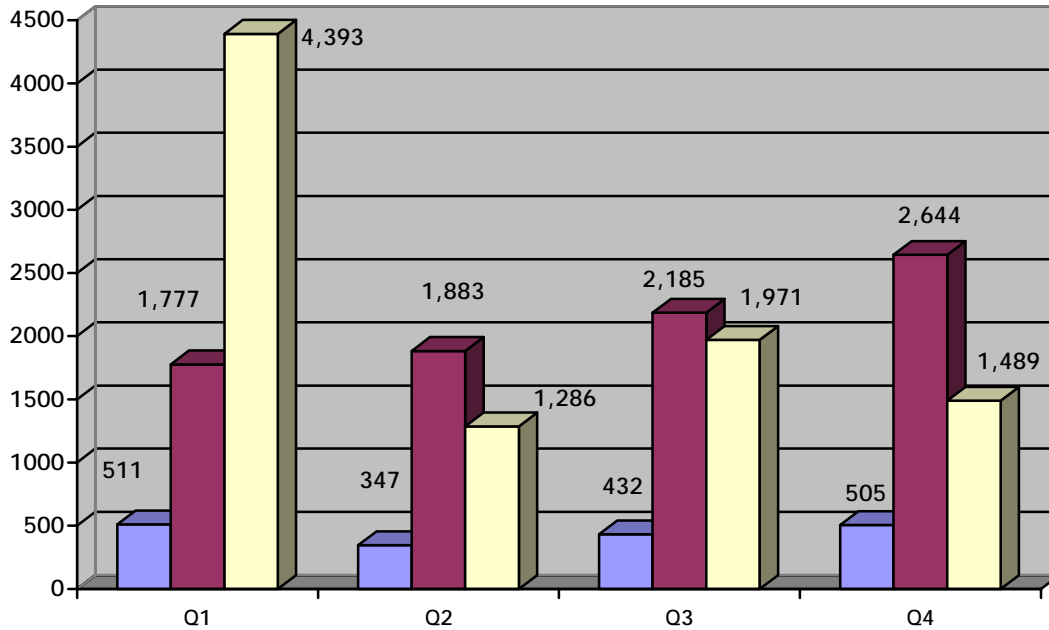
| Active                          | 1st Quarter | 2 <sup>nd</sup> Quarter | 3 <sup>rd</sup> Quarter | 4 <sup>th</sup> Quarter |
|---------------------------------|-------------|-------------------------|-------------------------|-------------------------|
| New & Reactivated Applications  | 5,703       | 5,446                   | 5,919                   | 5,699                   |
| Active Applications Inactivated | 1,777       | 1,883                   | 2,185                   | 2,644                   |
| Active Applications Cancelled   | 1,809       | 2,016                   | 2,092                   | 2,092                   |
| Active Waiting List*            | 48,802      | 49,310                  | 49,866                  | 49,478                  |

This number includes 9 applications received via the web that as of this date have not been assigned a household type

**'Active' waiting list** – on waiting list and ready to be housed

## SUMMARY OF ACTIVITIES

Inactive List Changes  
4th Quarter Inactive Activities 2007



■ Reactivated Applications 
 ■ Active Applications Inactivated 
 ■ Inactive Applications Cancelled

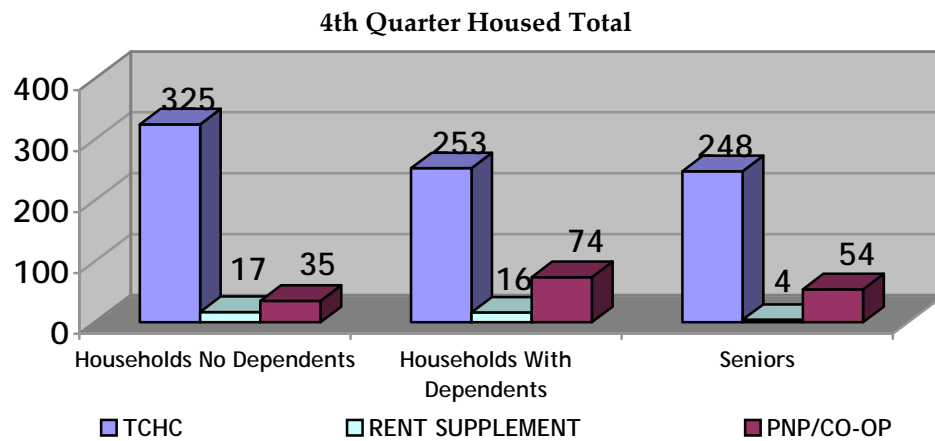
| Inactive                        | 1st Quarter | 2 <sup>nd</sup> Quarter | 3 <sup>rd</sup> Quarter | 4th Quarter |
|---------------------------------|-------------|-------------------------|-------------------------|-------------|
| Reactivated Applications        | 511         | 347                     | 432                     | 505         |
| Active Applications Inactivated | 1,777       | 1,883                   | 2,185                   | 2,644       |
| Inactive Applications Cancelled | 4,393       | 1,286                   | 1,971                   | 1,489       |
| Inactive Waiting List           | 16,026      | 16,276                  | 16,058                  | 16,708      |

| Wait List                                    | 1st Quarter | 2 <sup>nd</sup> Quarter | 3 <sup>rd</sup> Quarter | 4 <sup>th</sup> Quarter |
|--|-------------|-------------------------|-------------------------|-------------------------|
| Total Waiting List As At December 31st, 2007 | 64,828      | 65,586                  | 65,924                  | 66,186                  |

Total number of people on Housing Connections centralized waiting list for social housing is 128,666 as of December 31, 2007. The rest of the numbers in this Statistical Report refer to household applications that may have several people on their application.

**'Inactive' waiting list** – on waiting list but cannot be housed for any number of reasons i.e. waiting for documents, haven't heard from applicant, mail returned, no response to requests for confirmation of interest or housing offer withdrawn. Applications can be inactive for up to 24 months (five years for homeless applicants) before being cancelled.

## FOURTH QUARTER 2007 HOUSED ACTIVITIES USING TAWL



| TCHC                       | Room      | Bach       | 1B         | 2B         | 3B         | 4B        | 5B+      | Total      |
|----------------------------|-----------|------------|------------|------------|------------|-----------|----------|------------|
| Households no Dependents   | 20        | 161        | 88         | 45         | 10         | 1         | 0        | 325        |
| Households with Dependents | 1         | 6          | 3          | 137        | 95         | 9         | 2        | 253        |
| Seniors                    | 2         | 189        | 48         | 3          | 6          | 0         | 0        | 248        |
| <b>Total</b>               | <b>23</b> | <b>356</b> | <b>139</b> | <b>185</b> | <b>111</b> | <b>10</b> | <b>2</b> | <b>826</b> |

| Rent Supplement            | Room     | Bach     | 1B        | 2B        | 3B       | 4B       | 5B+      | Total     |
|----------------------------|----------|----------|-----------|-----------|----------|----------|----------|-----------|
| Households no Dependents   | 0        | 0        | 16        | 1         | 0        | 0        | 0        | 17        |
| Households with Dependents | 0        | 0        | 0         | 11        | 3        | 2        | 0        | 16        |
| Seniors                    | 0        | 0        | 4         | 0         | 0        | 0        | 0        | 4         |
| <b>Total</b>               | <b>0</b> | <b>0</b> | <b>20</b> | <b>12</b> | <b>3</b> | <b>2</b> | <b>0</b> | <b>37</b> |

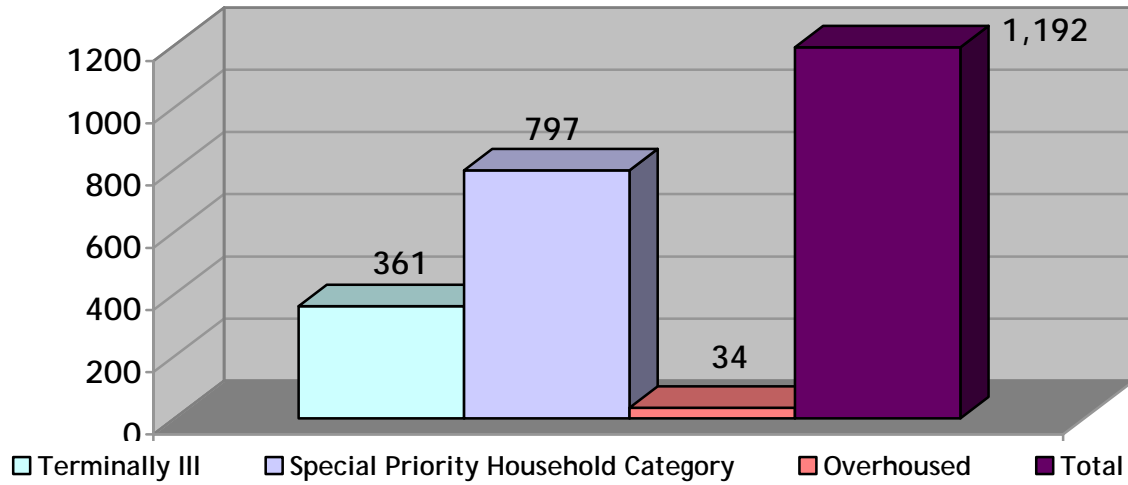
| PNP and CO-OP              | Room     | Bach      | 1B        | 2B        | 3B        | 4B       | 5B+      | Total      |
|----------------------------|----------|-----------|-----------|-----------|-----------|----------|----------|------------|
| Households no Dependents   | 0        | 10        | 19        | 5         | 1         | 0        | 0        | 35         |
| Households with Dependents | 0        | 0         | 0         | 56        | 16        | 1        | 1        | 74         |
| Seniors                    | 0        | 6         | 47        | 1         | 0         | 0        | 0        | 54         |
| <b>Total</b>               | <b>0</b> | <b>16</b> | <b>66</b> | <b>62</b> | <b>17</b> | <b>1</b> | <b>1</b> | <b>163</b> |

|                    |           |            |            |            |            |           |          |              |
|--------------------|-----------|------------|------------|------------|------------|-----------|----------|--------------|
| <b>GRAND TOTAL</b> | <b>23</b> | <b>372</b> | <b>225</b> | <b>259</b> | <b>131</b> | <b>13</b> | <b>3</b> | <b>1,026</b> |
|--------------------|-----------|------------|------------|------------|------------|-----------|----------|--------------|

TCHC = Toronto Community Housing Corporation    PNP = Private Non-Profit Housing Provider    CO-OP = Co-operative Housing Provider

## HOUSEHOLDS WITH PRIORITY ON THE ACTIVE WAITING LIST

Households with Priority on the Active Waiting List Total



| Type of Priority                    | Households no Dependents | Households with Dependents | Senior | Total |
|-------------------------------------|--------------------------|----------------------------|--------|-------|
| Terminally III                      | 149                      | 105                        | 107    | 361   |
| Special Priority Household Category | 255                      | 466                        | 76     | 797   |
| Over Housed                         | 18                       | 6                          | 10     | 34    |
| Total                               | 422                      | 577                        | 193    | 1,192 |

## HOUSEHOLDS WITH PRIORITY - HOUSED IN Q4

| TCHC                       | Special Priority Household Category | Terminally III | Total      |
|----------------------------|-------------------------------------|----------------|------------|
| Households no Dependents   | 89                                  | 15             | 104        |
| Households with Dependents | 96                                  | 2              | 98         |
| Seniors                    | 17                                  | 6              | 23         |
| <b>Total</b>               | <b>202</b>                          | <b>23</b>      | <b>225</b> |

| Rent Supplement            | Special Priority Household Category | Terminally III | Total     |
|----------------------------|-------------------------------------|----------------|-----------|
| Households no Dependents   | 6                                   | 3              | 9         |
| Households With Dependents | 3                                   | 0              | 3         |
| Seniors                    | 2                                   | 0              | 2         |
| <b>Total</b>               | <b>11</b>                           | <b>3</b>       | <b>14</b> |

| PNP/CO-OP                  | Special Priority Household Category | Terminally III | Total     |
|----------------------------|-------------------------------------|----------------|-----------|
| Households no Dependents   | 24                                  | 1              | 25        |
| Households with Dependents | 53                                  | 0              | 53        |
| Seniors                    | 10                                  | 0              | 10        |
| <b>Total</b>               | <b>87</b>                           | <b>1</b>       | <b>88</b> |

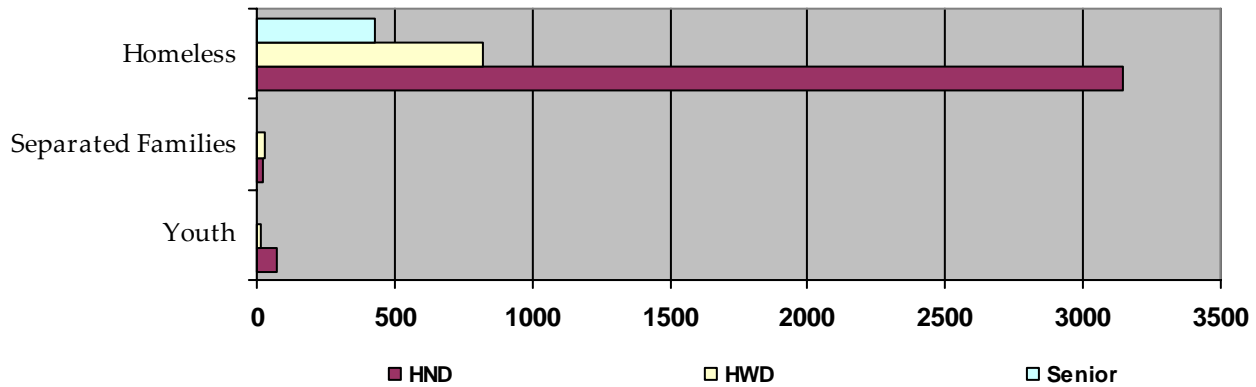
|                    |            |           |            |
|--------------------|------------|-----------|------------|
| <b>Grand Total</b> | <b>300</b> | <b>27</b> | <b>327</b> |
|--------------------|------------|-----------|------------|

TCHC = Toronto Community Housing Corporation

PNP = Private Non-Profit Housing Provider

CO-OP = Co-operative Housing Provider

## DISADVANTAGED HOUSEHOLDS (DA) ON THE ACTIVE WAITING LIST

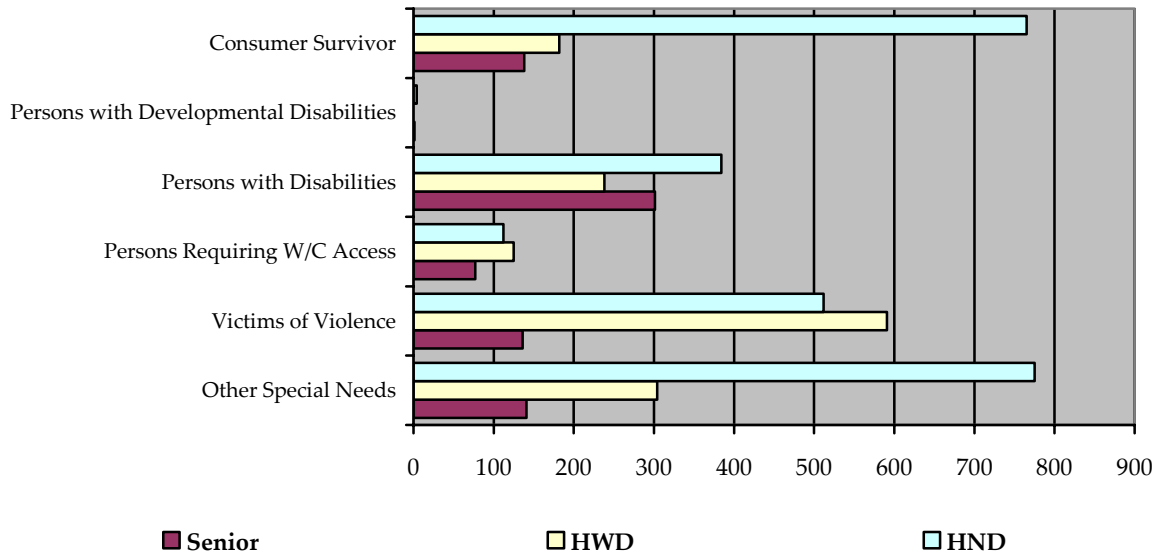


| Type of Disadvantaged Household | Households no Dependents | Households with Dependents | Senior     | Total        |
|---------------------------------|--------------------------|----------------------------|------------|--------------|
| Homeless *                      | 3,141                    | 823                        | 431        | 4,395        |
| Separated Families              | 21                       | 29                         | 1          | 51           |
| Youth                           | 69                       | 13                         | 0          | 82           |
| <b>Total</b>                    | <b>3,231</b>             | <b>865</b>                 | <b>432</b> | <b>4,528</b> |

\* This count does not include SPHC living in Shelters

\* This count includes Homeless Newcomers

## HOUSEHOLDS ON THE ACTIVE WAITING LIST WITH SPECIAL NEEDS

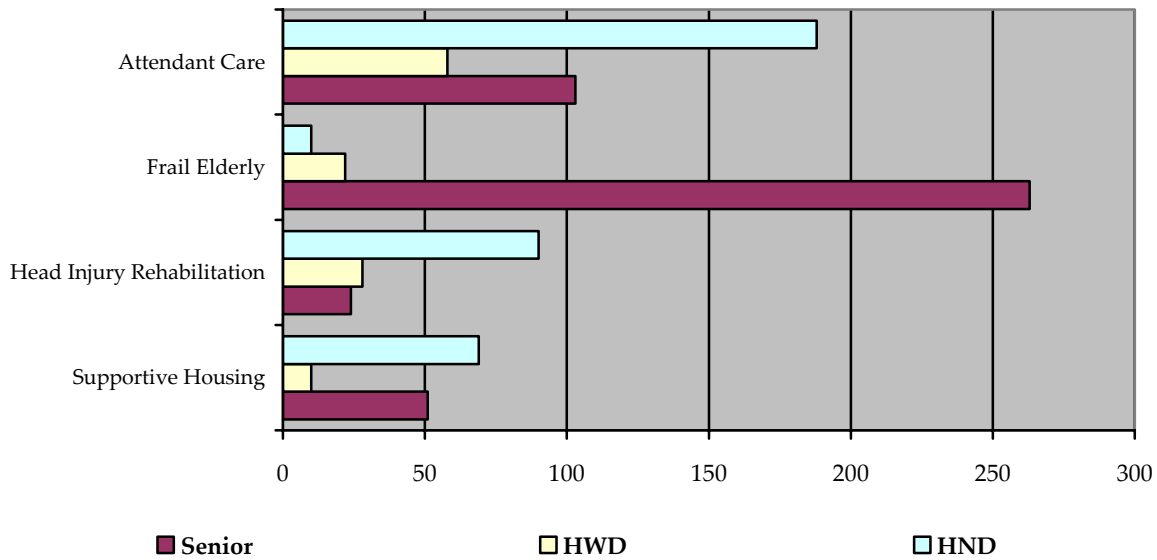


| Type of Special Needs Household         | Households no Dependents | Households with Dependents | Senior     | Total        |
|---|--------------------------|----------------------------|------------|--------------|
| Consumer Survivor                       | 765                      | 182                        | 138        | 1,085        |
| Persons With Developmental Disabilities | 4                        | 0                          | 1          | 5            |
| Persons with Disabilities               | 384                      | 238                        | 302        | 924          |
| Persons Requiring W/C Access            | 112                      | 125                        | 77         | 314          |
| Victims of Violence *                   | 512                      | 591                        | 136        | 1,239        |
| Other Special Needs                     | 775                      | 304                        | 141        | 1,220        |
| <b>Total</b>                            | <b>2,552</b>             | <b>1,440</b>               | <b>795</b> | <b>4,787</b> |

\* This count includes households where Special Priority Household Category has been assigned.

W/C = Wheelchair

## HOUSEHOLDS ON THE ACTIVE WAITING LIST REQUIRING SUPPORTIVE HOUSING



| Type of Supportive Housing | Households no Dependents | Households with Dependents | Senior     | Total      |
|----------------------------|--------------------------|----------------------------|------------|------------|
| Attendant Care             | 188                      | 58                         | 103        | 349        |
| Frail Elderly              | 10                       | 22                         | 263        | 295        |
| Head Injury Rehabilitation | 90                       | 28                         | 24         | 142        |
| Supportive Housing         | 69                       | 10                         | 51         | 130        |
| <b>Total</b>               | <b>357</b>               | <b>118</b>                 | <b>441</b> | <b>916</b> |

## HOUSED HOUSEHOLDS WITH SPECIAL HOUSING REQUIREMENTS

| TCHC                       | Homeless   | Separated Family | Youth    | Supportive Housing | Special Needs | Total      |
|----------------------------|------------|------------------|----------|--------------------|---------------|------------|
| Households no Dependents   | 119        | 0                | 4        | 2                  | 21            | 146        |
| Households with Dependents | 57         | 2                | 0        | 1                  | 20            | 80         |
| Seniors                    | 65         | 0                | 0        | 11                 | 26            | 102        |
| <b>Total</b>               | <b>241</b> | <b>2</b>         | <b>4</b> | <b>14</b>          | <b>67</b>     | <b>328</b> |

| Rent Supplement            | Homeless | Separated Family | Youth    | Supportive Housing | Special Needs | Total     |
|----------------------------|----------|------------------|----------|--------------------|---------------|-----------|
| Households no Dependents   | 3        | 0                | 1        | 0                  | 3             | 7         |
| Households With Dependents | 3        | 0                | 1        | 0                  | 3             | 7         |
| Seniors                    | 1        | 0                | 0        | 0                  | 2             | 3         |
| <b>Total</b>               | <b>7</b> | <b>0</b>         | <b>2</b> | <b>0</b>           | <b>8</b>      | <b>17</b> |

| PNP/CO-OP                  | Homeless  | Separated Family | Youth    | Supportive Housing | Special Needs | Total     |
|----------------------------|-----------|------------------|----------|--------------------|---------------|-----------|
| Households no Dependents   | 5         | 0                | 0        | 1                  | 3             | 9         |
| Households with Dependents | 9         | 1                | 0        | 0                  | 5             | 15        |
| Seniors                    | 7         | 0                | 0        | 4                  | 1             | 12        |
| <b>Total</b>               | <b>21</b> | <b>1</b>         | <b>0</b> | <b>5</b>           | <b>9</b>      | <b>36</b> |

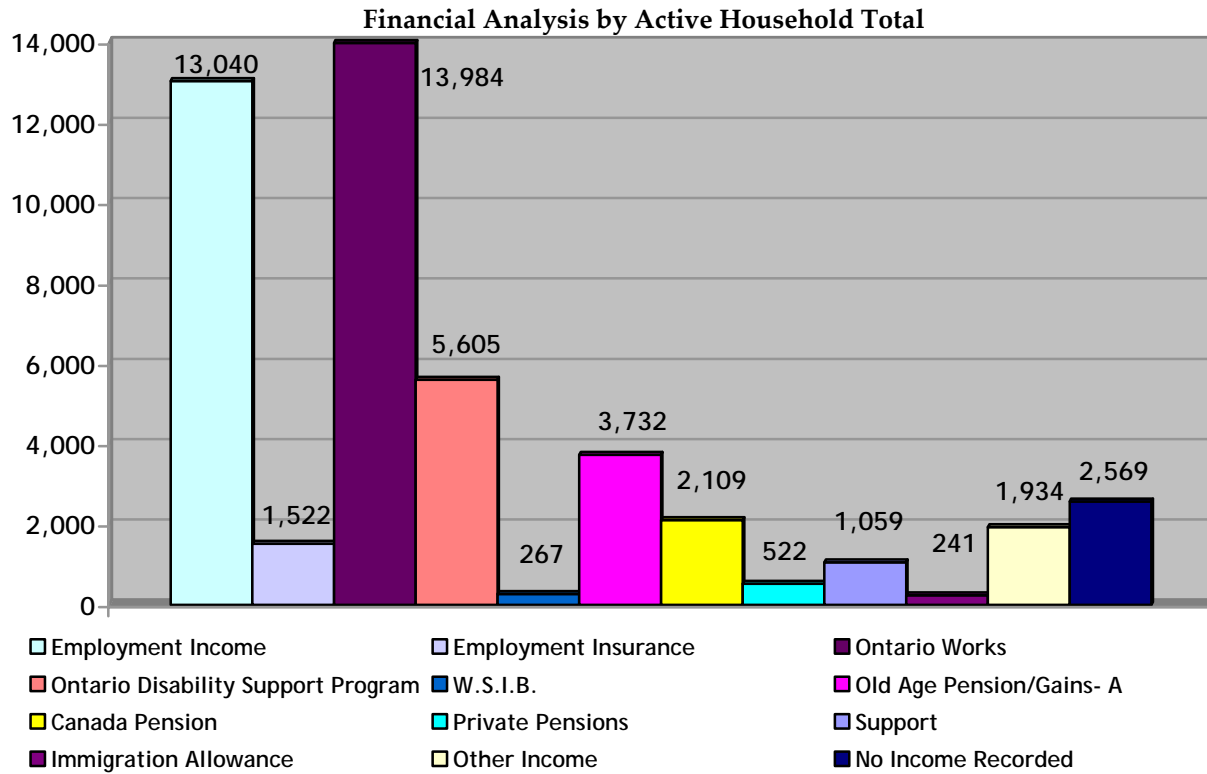
|                    |            |          |          |           |           |            |
|--------------------|------------|----------|----------|-----------|-----------|------------|
| <b>Grand Total</b> | <b>269</b> | <b>3</b> | <b>6</b> | <b>19</b> | <b>84</b> | <b>381</b> |
|--------------------|------------|----------|----------|-----------|-----------|------------|

TCHC = Toronto Community Housing Corporation

PNP = Private Non-Profit Housing Provider

CO-OP = Co-operative Housing Provider

## MAJOR INCOME SOURCE BY ACTIVE HOUSEHOLD



| Income Type                        | Households no Dependents | Households with Dependents | Senior        | Total         |
|------------------------------------|--------------------------|----------------------------|---------------|---------------|
| Employment Income                  | 5,574                    | 5,371                      | 2,095         | 13,040        |
| Employment Insurance               | 620                      | 716                        | 186           | 1,522         |
| Ontario Works                      | 6,300                    | 5,947                      | 1,737         | 13,984        |
| Ontario Disability Support Program | 3,255                    | 1,013                      | 1,337         | 5,605         |
| W.S.I.B.                           | 117                      | 64                         | 86            | 267           |
| Old Age Pension/Gains- A           | 110                      | 190                        | 3,432         | 3,732         |
| Canada Pension                     | 471                      | 128                        | 1,510         | 2,109         |
| Private Pensions                   | 67                       | 40                         | 415           | 522           |
| Support                            | 122                      | 197                        | 740           | 1,059         |
| Immigration Allowance              | 85                       | 141                        | 15            | 241           |
| Other Income                       | 739                      | 565                        | 630           | 1,934         |
| No Income Recorded                 | 890                      | 1,321                      | 358           | 2,569         |
| <b>Total</b>                       | <b>18,350</b>            | <b>15,693</b>              | <b>12,541</b> | <b>46,584</b> |

W.S.I.B = Workplace Safety Insurance Board

## TIME ON ACTIVE WAITING LIST BY HOUSEHOLD TYPE

|               | < 1 Year     |              |              | 1 up to 3 Years |              |              | 3 up to 5 Years |              |              | 5 up to 7 Years |              |              | 7 up to 10 Years |              |              | > 10 Years |            |            |
|---------------|--------------|--------------|--------------|-----------------|--------------|--------------|-----------------|--------------|--------------|-----------------|--------------|--------------|------------------|--------------|--------------|------------|------------|------------|
|               | HND          | HWD          | SEN          | HND             | HWD          | SEN          | HND             | HWD          | SEN          | HND             | HWD          | SEN          | HND              | HWD          | SEN          | HND        | HWD        | SEN        |
| Room          | 9            | 0            | 0            | 4               | 0            | 1            | 3               | 0            | 0            | 1               | 0            | 0            | 0                | 0            | 0            | 0          | 0          | 0          |
| Bachelor      | 388          | 2            | 203          | 437             | 7            | 221          | 110             | 7            | 106          | 35              | 1            | 15           | 12               | 0            | 9            | 3          | 0          | 2          |
| One Bedroom   | 4,414        | 156          | 2,472        | 5,469           | 297          | 3,885        | 2,804           | 229          | 2,694        | 1,586           | 165          | 1,671        | 1,003            | 127          | 1,112        | 420        | 71         | 556        |
| Two Bedroom   | 371          | 1,922        | 65           | 608             | 2,726        | 92           | 386             | 1,801        | 64           | 191             | 954          | 55           | 120              | 614          | 42           | 46         | 333        | 44         |
| Three Bedroom | 74           | 1,064        | 13           | 90              | 1,587        | 23           | 95              | 1,276        | 7            | 82              | 918          | 11           | 69               | 628          | 12           | 19         | 340        | 1          |
| Four Bedroom  | 10           | 143          | 2            | 9               | 246          | 4            | 8               | 202          | 5            | 13              | 156          | 2            | 11               | 126          | 0            | 3          | 70         | 2          |
| Five Bedroom  | 1            | 30           | 1            | 0               | 41           | 2            | 3               | 14           | 0            | 3               | 11           | 0            | 1                | 9            | 1            | 0          | 3          | 0          |
| <b>Total</b>  | <b>5,267</b> | <b>3,317</b> | <b>2,756</b> | <b>6,617</b>    | <b>4,904</b> | <b>4,228</b> | <b>3,409</b>    | <b>3,529</b> | <b>2,876</b> | <b>1,911</b>    | <b>2,205</b> | <b>1,754</b> | <b>1,216</b>     | <b>1,504</b> | <b>1,176</b> | <b>491</b> | <b>817</b> | <b>605</b> |