



Quarterly Activity Report

3rd Quarter 2007

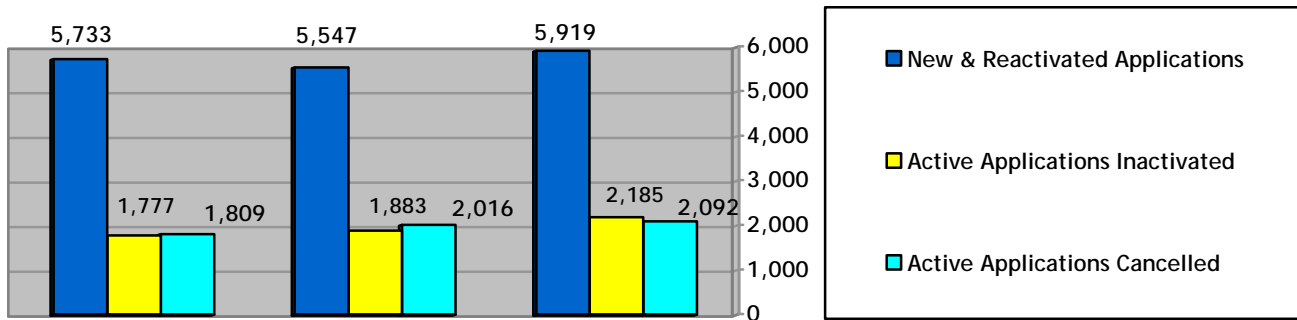
July 1st, 2007 - September 30th, 2007

LEGEND

| | | | |
|-------|-----------------------------------------|------|------------------|
| HND | = Households with no dependents | Bach | = Bachelor unit |
| HWD | = Households with dependents | 1B | = 1 bedroom unit |
| TCHC | = Toronto Community Housing Corporation | 2B | = 2 bedroom unit |
| PNP | = Private, non-profit housing provider | 3B | = 3 bedroom unit |
| Co-op | = Co-operative housing provider | 4B | = 4 bedroom unit |
| DA | = Disadvantaged households | 5B | = 5 bedroom unit |
| WSIB | = Workplace Safety Insurance Board | W/C | = Wheelchair |

SUMMARY OF ACTIVITIES

3rd Quarter Active Activities 2007

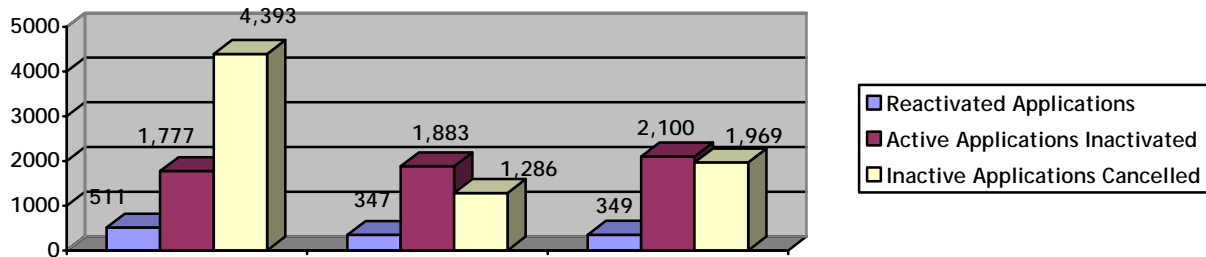


| Active | 1st Quarter | 2 nd Quarter | 3 rd Quarter |
|---------------------------------|-------------|-------------------------|-------------------------|
| New & Reactivated Applications | 5,703 | 5,446 | 5,919 |
| Active Applications Inactivated | 1,777 | 1,883 | 2,185 |
| Active Applications Cancelled | 1,809 | 2,016 | 2,092 |
| Active Waiting List** | 48,802 | 49,310 | 49,866 |

* This number includes households housed directly by Providers

** This number includes 9 applications received via the web that as of this date have not been assigned a household type

3rd Quarter Inactive Activities 2007

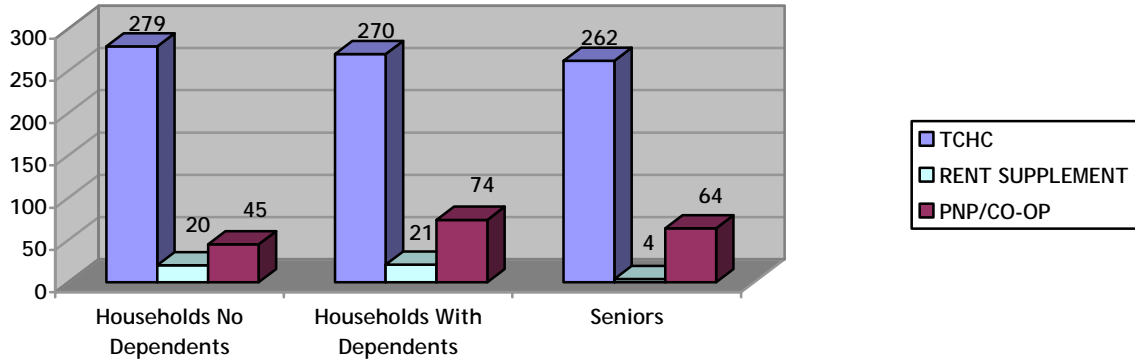


| Inactive | 1st Quarter | 2 nd Quarter | 3 rd Quarter |
|---------------------------------|-------------|-------------------------|-------------------------|
| Reactivated Applications | 511 | 347 | 432 |
| Active Applications Inactivated | 1,777 | 1,883 | 2,185 |
| Inactive Applications Cancelled | 4,393 | 1,286 | 1,971 |
| Inactive Waiting List | 16,026 | 16,276 | 16,058 |

| Wait List | 1st Quarter | 2 nd Quarter | 3 rd Quarter |
|------------------------------------------------------------|-------------|-------------------------|-------------------------|
| Total Waiting List As At September 30 th , 2007 | 64,828 | 65,586 | 65,924 |

SECOND QUARTER 2007 HOUSED ACTIVITIES USING TAWL

3rd Quarter Housed Total



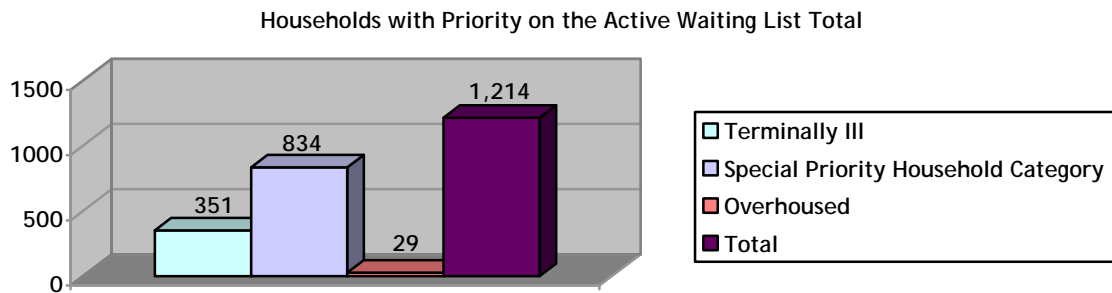
| TCHC | Room | Bach | 1B | 2B | 3B | 4B | 5B+ | Total |
|----------------------------|-----------|------------|------------|------------|------------|-----------|----------|------------|
| Households no Dependents | 22 | 125 | 86 | 30 | 13 | 3 | 0 | 279 |
| Households with Dependents | 0 | 7 | 4 | 127 | 105 | 23 | 4 | 270 |
| Seniors | 2 | 195 | 58 | 6 | 1 | 0 | 0 | 262 |
| Total | 24 | 327 | 148 | 163 | 119 | 26 | 4 | 811 |

| Rent Supplement | Room | Bach | 1B | 2B | 3B | 4B | 5B+ | Total |
|----------------------------|----------|----------|-----------|-----------|----------|----------|----------|-----------|
| Households no Dependents | 0 | 1 | 14 | 5 | 0 | 0 | 0 | 20 |
| Households with Dependents | 0 | 0 | 0 | 13 | 8 | 0 | 0 | 21 |
| Seniors | 0 | 0 | 3 | 0 | 1 | 0 | 0 | 4 |
| Total | 0 | 1 | 17 | 18 | 9 | 0 | 0 | 45 |

| PNP and CO-OP | Room | Bach | 1B | 2B | 3B | 4B | 5B+ | Total |
|----------------------------|----------|-----------|-----------|-----------|-----------|----------|----------|------------|
| Households no Dependents | 0 | 16 | 17 | 9 | 2 | 1 | 0 | 45 |
| Households with Dependents | 0 | 0 | 2 | 55 | 13 | 3 | 1 | 74 |
| Seniors | 0 | 7 | 47 | 6 | 0 | 4 | 0 | 64 |
| Total | 0 | 23 | 66 | 70 | 15 | 8 | 1 | 183 |

| | | | | | | | | |
|--------------------|-----------|------------|------------|------------|------------|-----------|----------|--------------|
| GRAND TOTAL | 24 | 351 | 231 | 251 | 143 | 34 | 5 | 1,039 |
|--------------------|-----------|------------|------------|------------|------------|-----------|----------|--------------|

HOUSEHOLDS WITH PRIORITY ON THE ACTIVE WAITING LIST



| Type of Priority | Households no Dependents | Households with Dependents | Senior | Total |
|-------------------------------------|--------------------------|----------------------------|------------|--------------|
| Terminally III | 147 | 106 | 98 | 351 |
| Special Priority Household Category | 285 | 477 | 72 | 834 |
| Over Housed | 16 | 4 | 9 | 29 |
| Total | 448 | 587 | 179 | 1,214 |

HOUSEHOLDS WITH PRIORITY - HOUSED

| TCHC | Special Priority Household Category | Terminally III | Total |
|----------------------------|-------------------------------------|----------------|------------|
| Households no Dependents | 76 | 3 | 79 |
| Households with Dependents | 98 | 6 | 104 |
| Seniors | 25 | 10 | 35 |
| Total | 199 | 19 | 218 |

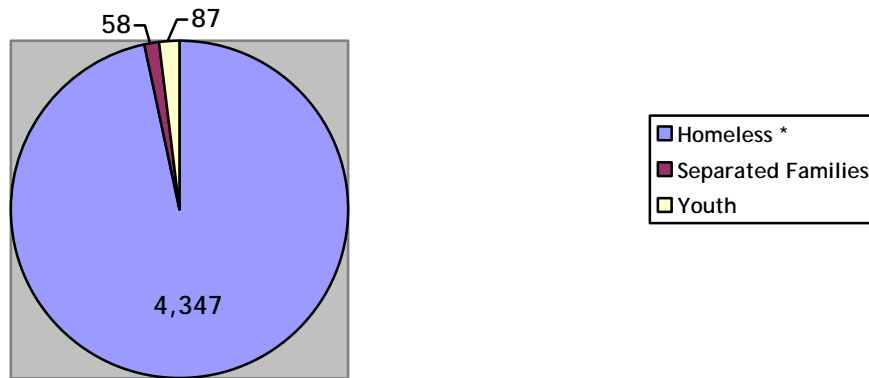
| Rent Supplement | Special Priority Household Category | Terminally III | Total |
|----------------------------|-------------------------------------|----------------|----------|
| Households no Dependents | 7 | 0 | 7 |
| Households With Dependents | 0 | 0 | 0 |
| Seniors | 0 | 1 | 1 |
| Total | 7 | 1 | 8 |

| PNP/CO-OP | Special Priority Household Category | Terminally III | Total |
|----------------------------|-------------------------------------|----------------|-----------|
| Households no Dependents | 14 | 0 | 14 |
| Households with Dependents | 52 | 4 | 56 |
| Seniors | 9 | 2 | 11 |
| Total | 75 | 6 | 81 |

| | | | |
|--------------------|------------|-----------|------------|
| Grand Total | 281 | 26 | 307 |
|--------------------|------------|-----------|------------|

DISADVANTAGED HOUSEHOLDS (DA) ON THE ACTIVE WAITING LIST

Disadvantaged Households (DA) on the Active Waiting List Total

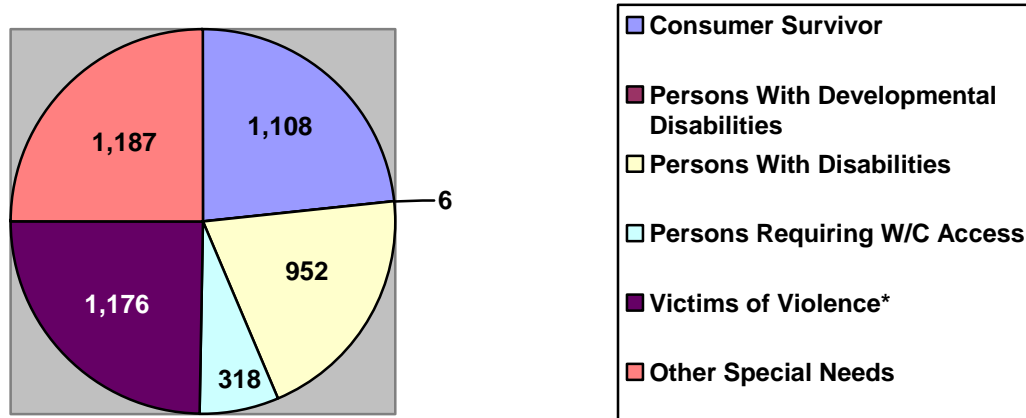


| Type of Disadvantaged Household | Households no Dependents | Households with Dependents | Senior | Total |
|---------------------------------|--------------------------|----------------------------|------------|--------------|
| Homeless * | 3,080 | 836 | 431 | 4,347 |
| Separated Families | 27 | 31 | 0 | 58 |
| Youth | 73 | 14 | 0 | 87 |
| Total | 3,180 | 881 | 431 | 4,492 |

* This count does not include SPHC living in Shelters

* This count includes Homeless Newcomers

HOUSEHOLDS ON THE ACTIVE WAITING LIST WITH SPECIAL NEEDS

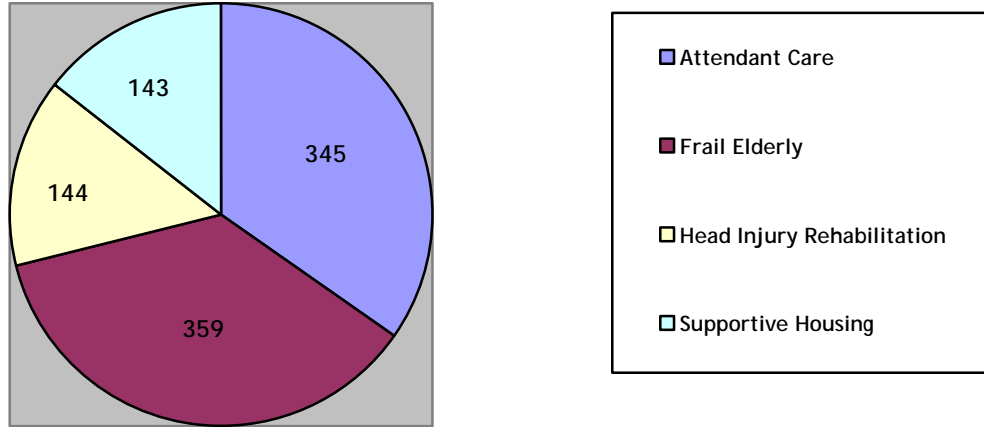


| Type of Special Needs Household | Households no Dependents | Households with Dependents | Senior | Total |
|-----------------------------------------|--------------------------|----------------------------|------------|--------------|
| Consumer Survivor | 785 | 185 | 138 | 1,108 |
| Persons With Developmental Disabilities | 4 | 0 | 2 | 6 |
| Persons with Disabilities | 398 | 240 | 314 | 952 |
| Persons Requiring W/C Access | 117 | 125 | 76 | 318 |
| Victims of Violence * | 499 | 548 | 129 | 1,176 |
| Other Special Needs | 751 | 296 | 140 | 1,187 |
| Total | 2,554 | 1,394 | 799 | 4,747 |

* This count includes households where S PHC (Special Priority Household Category) has been assigned.

HOUSEHOLDS ON THE ACTIVE WAITING LIST REQUIRING SUPPORTIVE HOUSING

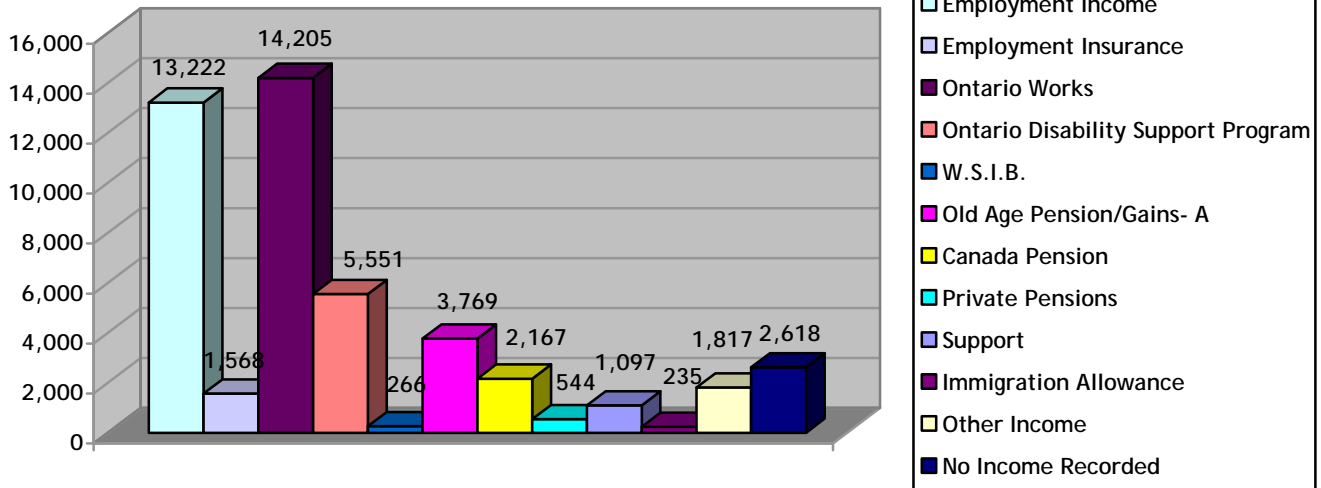
Households On The Active Waiting List Requiring Supportive Housing Total



| Type of Supportive Housing | Households no Dependents | Households with Dependents | Senior | Total |
|----------------------------|--------------------------|----------------------------|------------|------------|
| Attendant Care | 185 | 57 | 103 | 345 |
| Frail Elderly | 12 | 26 | 321 | 359 |
| Head Injury Rehabilitation | 91 | 26 | 27 | 144 |
| Supportive Housing | 73 | 10 | 60 | 143 |
| Total | 361 | 119 | 511 | 991 |

MAJOR INCOME SOURCE BY ACTIVE HOUSEHOLD

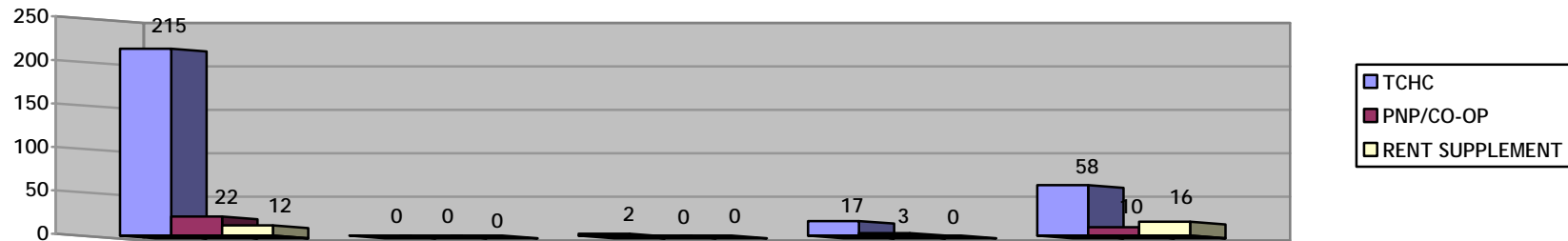
Financial Analysis by Active Household Total



| Income Type | Households no Dependents | Households with Dependents | Senior | Total |
|------------------------------------|--------------------------|----------------------------|---------------|---------------|
| Employment Income | 5,681 | 5,493 | 2,048 | 13,222 |
| Employment Insurance | 619 | 754 | 195 | 1,568 |
| Ontario Works | 6,390 | 6,108 | 1,707 | 14,205 |
| Ontario Disability Support Program | 3,229 | 1,014 | 1,308 | 5,551 |
| W.S.I.B. | 118 | 60 | 88 | 266 |
| Old Age Pension/Gains- A | 115 | 193 | 3,461 | 3,769 |
| Canada Pension | 488 | 128 | 1,551 | 2,167 |
| Private Pensions | 68 | 40 | 436 | 544 |
| Support | 132 | 205 | 760 | 1,097 |
| Immigration Allowance | 77 | 145 | 13 | 235 |
| Other Income | 679 | 547 | 591 | 1,817 |
| No Income Recorded | 880 | 1,402 | 336 | 2,618 |
| Total | 18,476 | 16,089 | 12,494 | 47,059 |

HOUSED HOUSEHOLDS WITH SPECIAL HOUSING REQUIREMENTS

Housed Households with Special Requirements Totals



| TCHC | Homeless * | Separated Family | Youth | Supportive Housing | Special Needs | Total |
|----------------------------|------------|------------------|----------|--------------------|---------------|------------|
| Households no Dependents | 91 | 0 | 1 | 2 | 20 | 114 |
| Households with Dependents | 65 | 0 | 1 | 2 | 16 | 84 |
| Seniors | 58 | 0 | 0 | 13 | 22 | 93 |
| Total | 214 | 0 | 2 | 17 | 58 | 291 |

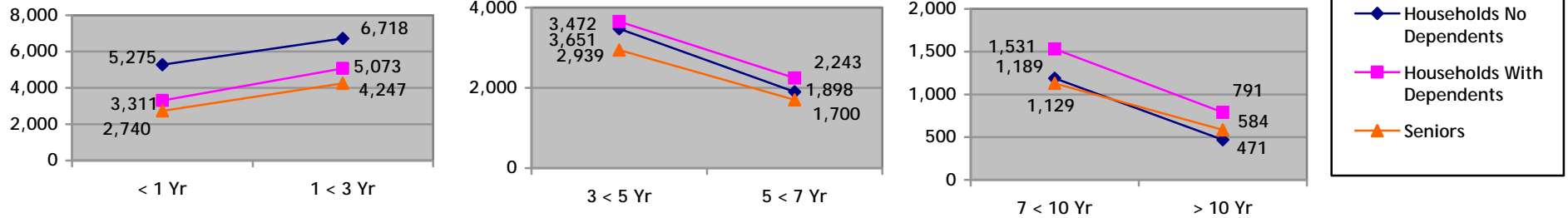
| Rent Supplement | Homeless * | Separated Family | Youth | Supportive Housing | Special Needs | Total |
|----------------------------|------------|------------------|----------|--------------------|---------------|-----------|
| Households no Dependents | 6 | 0 | 0 | 0 | 4 | 10 |
| Households With Dependents | 6 | 0 | 0 | 0 | 10 | 16 |
| Seniors | 0 | 0 | 0 | 0 | 2 | 2 |
| Total | 12 | 0 | 0 | 0 | 16 | 28 |

| PNP/CO-OP | Homeless * | Separated Family | Youth | Supportive Housing | Special Needs | Total |
|----------------------------|------------|------------------|----------|--------------------|---------------|-----------|
| Households no Dependents | 10 | 0 | 0 | 0 | 4 | 14 |
| Households with Dependents | 9 | 0 | 0 | 0 | 4 | 13 |
| Seniors | 3 | 0 | 0 | 3 | 2 | 8 |
| Total | 22 | 0 | 0 | 3 | 10 | 35 |

| | | | | | | |
|--------------------|------------|----------|----------|-----------|-----------|------------|
| Grand Total | 249 | 0 | 2 | 20 | 84 | 355 |
|--------------------|------------|----------|----------|-----------|-----------|------------|

TIME ON ACTIVE WAITING LIST BY HOUSEHOLD TYPE

Waiting List Total



| | < 1 Year | | | 1 up to 3 Years | | | 3 up to 5 Years | | | 5 up to 7 Years | | | 7 up to 10 Years | | | > 10 Years | | |
|---------------|--------------|--------------|--------------|-----------------|--------------|--------------|-----------------|--------------|--------------|-----------------|--------------|--------------|------------------|--------------|--------------|------------|------------|------------|
| | HND | HWD | SEN | HND | HWD | SEN | HND | HWD | SEN | HND | HWD | SEN | HND | HWD | SEN | HND | HWD | SEN |
| Room | 10 | 0 | 1 | 9 | 0 | 0 | 1 | 0 | 0 | 1 | 0 | 0 | 0 | 0 | 0 | 0 | 0 | 0 |
| Bachelor | 434 | 1 | 213 | 476 | 14 | 224 | 107 | 4 | 105 | 38 | 1 | 18 | 8 | 1 | 8 | 2 | 0 | 2 |
| One Bedroom | 4,352 | 143 | 2,453 | 5,519 | 312 | 3,926 | 2,849 | 231 | 2,768 | 1,575 | 158 | 1,633 | 974 | 125 | 1,073 | 406 | 70 | 542 |
| Two Bedroom | 389 | 1,947 | 64 | 617 | 2,799 | 78 | 398 | 1,890 | 58 | 187 | 980 | 43 | 120 | 625 | 41 | 42 | 318 | 38 |
| Three Bedroom | 81 | 1,052 | 6 | 86 | 1,655 | 15 | 102 | 1,298 | 6 | 83 | 929 | 4 | 74 | 658 | 5 | 18 | 324 | 1 |
| Four Bedroom | 8 | 138 | 2 | 11 | 252 | 3 | 10 | 212 | 2 | 12 | 166 | 1 | 12 | 112 | 1 | 3 | 74 | 1 |
| Five Bedroom | 1 | 30 | 1 | 0 | 41 | 1 | 5 | 16 | 0 | 2 | 9 | 1 | 1 | 10 | 1 | 0 | 5 | 0 |
| Total | 5,275 | 3,311 | 2,740 | 6,718 | 5,073 | 4,247 | 3,472 | 3,651 | 2,939 | 1,898 | 2,243 | 1,700 | 1,189 | 1,531 | 1,129 | 471 | 791 | 584 |

- This does not include Households currently at a Pending Status

HND = Households No Dependents
HWD = Households With Dependents
SEN = Seniors