



Quarterly Activity Report

2nd Quarter 2007

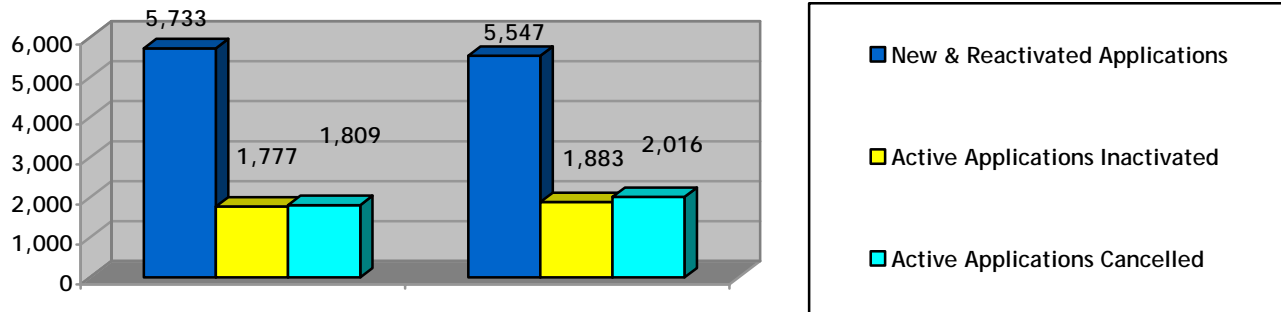
April 1st, 2007 - June 30th, 2007

LEGEND

HND	= Households with no dependents	Bach	= Bachelor unit
HWD	= Households with dependents	1B	= 1 bedroom unit
TCHC	= Toronto Community Housing Corporation	2B	= 2 bedroom unit
PNP	= Private, non-profit housing provider	3B	= 3 bedroom unit
Co-op	= Co-operative housing provider	4B	= 4 bedroom unit
DA	= Disadvantaged households	5B	= 5 bedroom unit
WSIB	= Workplace Safety Insurance Board	W/C	= Wheelchair

SUMMARY OF ACTIVITIES

2nd Quarter Active Activities 2007

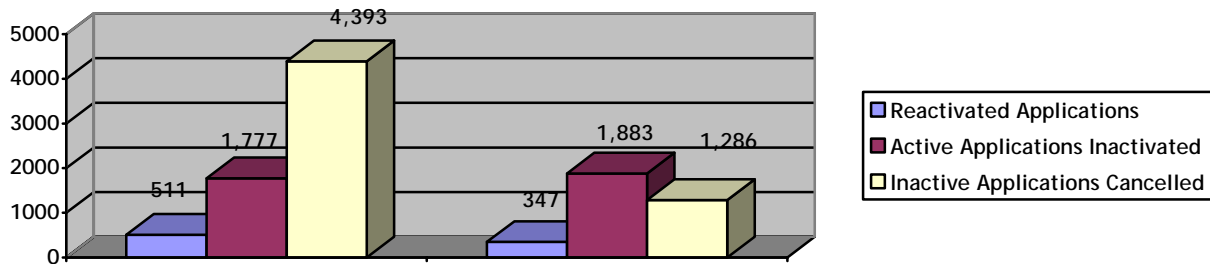


Active	1st Quarter	2 nd Quarter
New & Reactivated Applications	5,703	5,446
Active Applications Inactivated	1,777	1,883
Active Applications Cancelled	1,809	2,016
Active Waiting List**	48,802	49,310

* This number includes households housed directly by Providers

** This number includes 9 applications received via the web that as of this date have not been assigned a household type

2nd Quarter Inactive Activities 2006

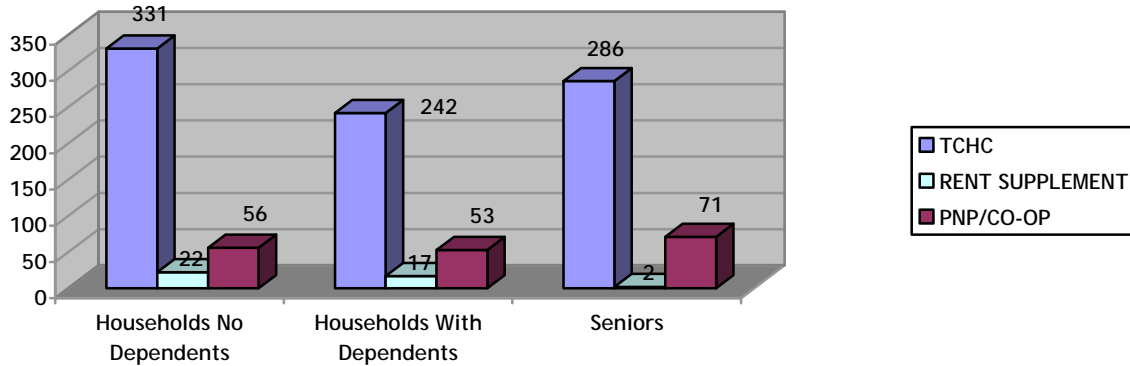


Inactive	1st Quarter	2 nd Quarter
Reactivated Applications	511	347
Active Applications Inactivated	1,777	1,883
Inactive Applications Cancelled	4,393	1,286
Inactive Waiting List	16,026	16,276

Wait List	1st Quarter	2 nd Quarter
Total Waiting List As At June 30 th , 2007	64,828	65,586

SECOND QUARTER 2007 HOUSED ACTIVITIES USING TAWL

2nd Quarter Housed Total



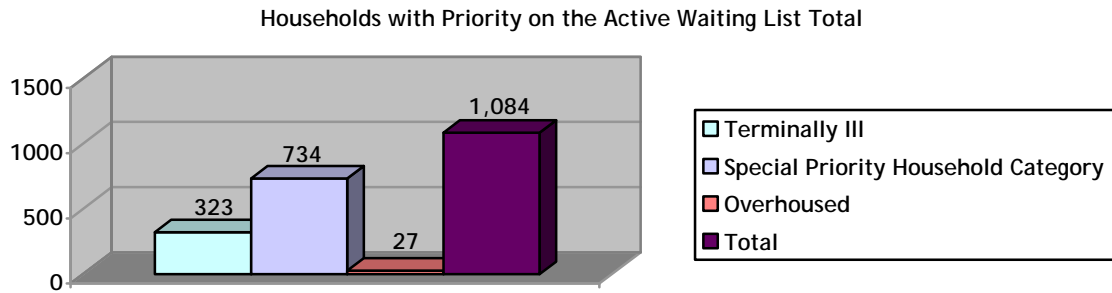
TCHC	Room	Bach	1B	2B	3B	4B	5B+	Total
Households no Dependents	31	160	91	41	8	0	0	331
Households with Dependents	0	11	6	131	81	8	5	242
Seniors	1	209	69	4	3	0	0	286
Total	32	380	166	176	92	8	5	859

Rent Supplement	Room	Bach	1B	2B	3B	4B	5B+	Total
Households no Dependents	0	0	17	5	0	0	0	22
Households with Dependents	0	0	2	14	1	0	0	17
Seniors	0	0	2	0	0	0	0	2
Total	0	0	21	19	1	0	0	41

PNP and CO-OP	Room	Bach	1B	2B	3B	4B	5B+	Total
Households no Dependents	0	16	24	13	3	0	0	56
Households with Dependents	0	0	5	25	16	5	2	53
Seniors	0	7	58	6	0	0	0	71
Total	0	23	87	44	19	5	2	180

GRAND TOTAL	32	403	274	239	112	13	7	1,080
--------------------	-----------	------------	------------	------------	------------	-----------	----------	--------------

HOUSEHOLDS WITH PRIORITY ON THE ACTIVE WAITING LIST



Type of Priority	Households no Dependents	Households with Dependents	Senior	Total
Terminally III	128	107	88	323
Special Priority Household Category	249	433	52	734
Overhoused	15	7	5	27
Total	392	547	145	1,084

HOUSEHOLDS WITH PRIORITY - HOUSED

TCHC	Special Priority Household Category	Terminally III	Total
Households no Dependents	60	13	73
Households with Dependents	86	3	89
Seniors	16	6	22
Total	162	22	184

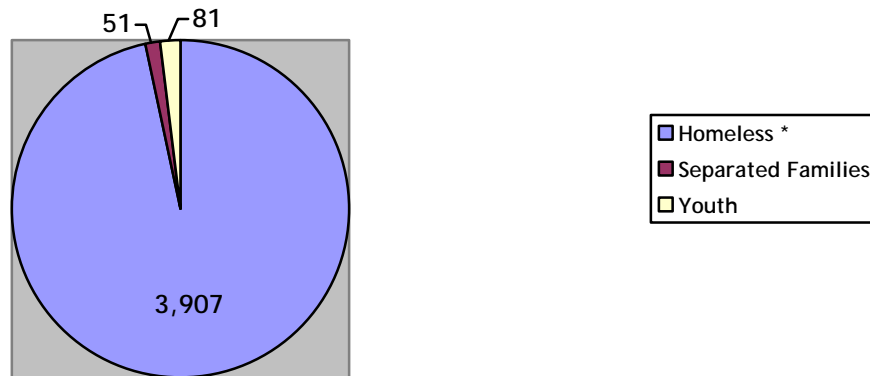
Rent Supplement	Special Priority Household Category	Terminally III	Total
Households no Dependents	6	2	8
Households With Dependents	1	0	1
Seniors	0	0	0
Total	7	2	9

PNP/CO-OP	Special Priority Household Category	Terminally III	Total
Households no Dependents	27	3	30
Households with Dependents	36	0	36
Seniors	8	2	10
Total	71	5	76

Grand Total	240	29	269
--------------------	------------	-----------	------------

DISADVANTAGED HOUSEHOLDS (DA) ON THE ACTIVE WAITING LIST

Disadvantaged Households (DA) on the Active Waiting List Total

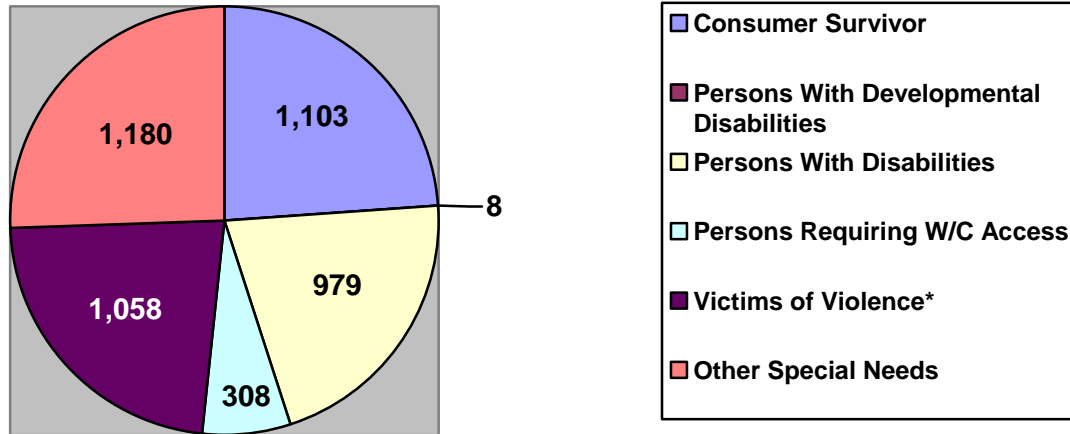


Type of Disadvantaged Household	Households no Dependents	Households with Dependents	Senior	Total
Homeless *	2,806	738	363	3,907
Separated Families	20	31	0	51
Youth	66	15	0	81
Total	2,892	784	363	4,039

* This count does not include SPHC living in Shelters

* This count includes Homeless Newcomers

HOUSEHOLDS ON THE ACTIVE WAITING LIST WITH SPECIAL NEEDS

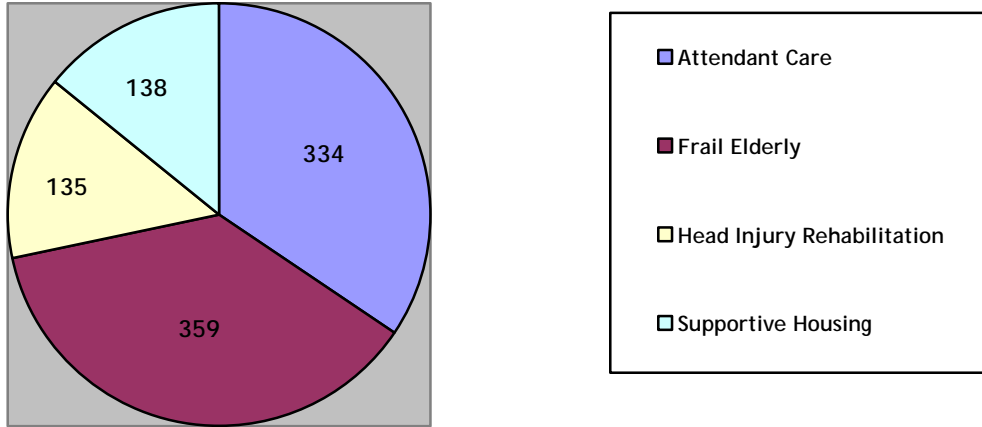


Type of Special Needs Household	Households no Dependents	Households with Dependents	Senior	Total
Consumer Survivor	791	184	128	1,103
Persons With Developmental Disabilities	5	0	3	8
Persons with Disabilities	415	249	315	979
Persons Requiring W/C Access	110	125	73	308
Victims of Violence *	436	512	110	1,058
Other Special Needs	749	303	128	1,180
Total	2,506	1,373	757	4,636

* This count includes households where S PHC (Special Priority Household Category) has been assigned.

HOUSEHOLDS ON THE ACTIVE WAITING LIST REQUIRING SUPPORTIVE HOUSING

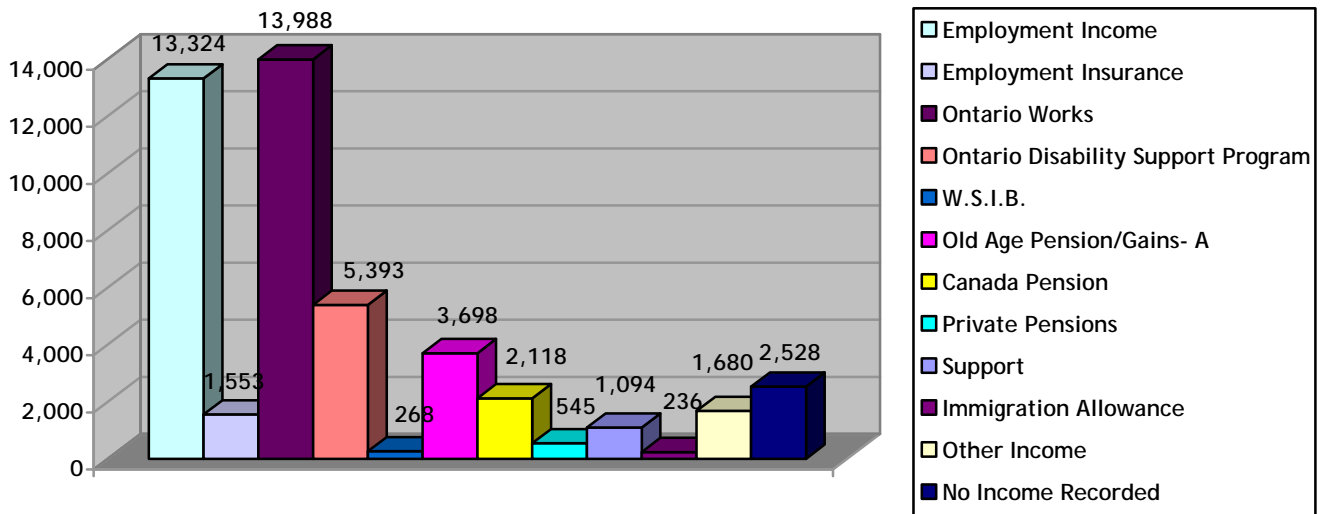
Households On The Active Waiting List Requiring Supportive Housing Total



Type of Supportive Housing	Households no Dependents	Households with Dependents	Senior	Total
Attendant Care	183	54	97	334
Frail Elderly	14	30	315	359
Head Injury Rehabilitation	86	26	23	135
Supportive Housing	74	10	54	138
Total	357	120	489	966

MAJOR INCOME SOURCE BY ACTIVE HOUSEHOLD

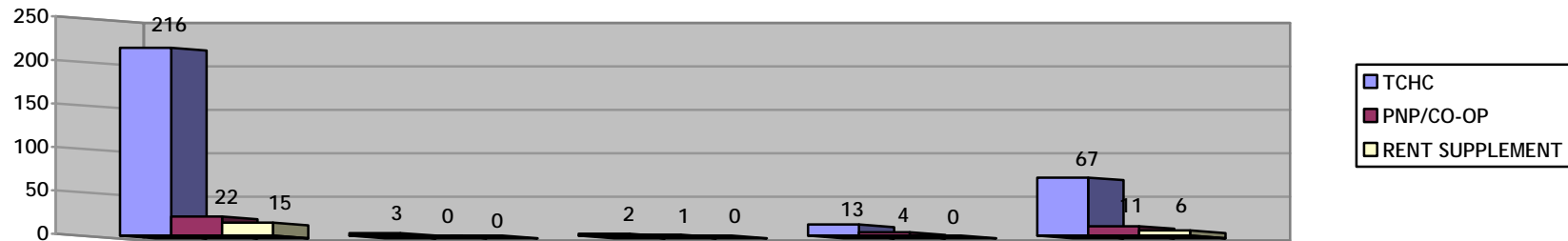
Financial Analysis by Active Household Total



Income Type	Households no Dependents	Households with Dependents	Senior	Total
Employment Income	5,764	5,575	1,985	13,324
Employment Insurance	616	747	190	1,553
Ontario Works	6,233	6,126	1,629	13,988
Ontario Disability Support Program	3,160	999	1,234	5,393
W.S.I.B.	117	58	93	268
Old Age Pension/Gains- A	119	190	3,389	3,698
Canada Pension	480	132	1,506	2,118
Private Pensions	70	41	434	545
Support	123	209	762	1,094
Immigration Allowance	79	143	14	236
Other Income	616	533	531	1,680
No Income Recorded	827	1,399	302	2,528
Total	18,204	16,152	12,069	46,425

HOUSED HOUSEHOLDS WITH SPECIAL HOUSING REQUIREMENTS

Housed Households with Special Requirements Totals



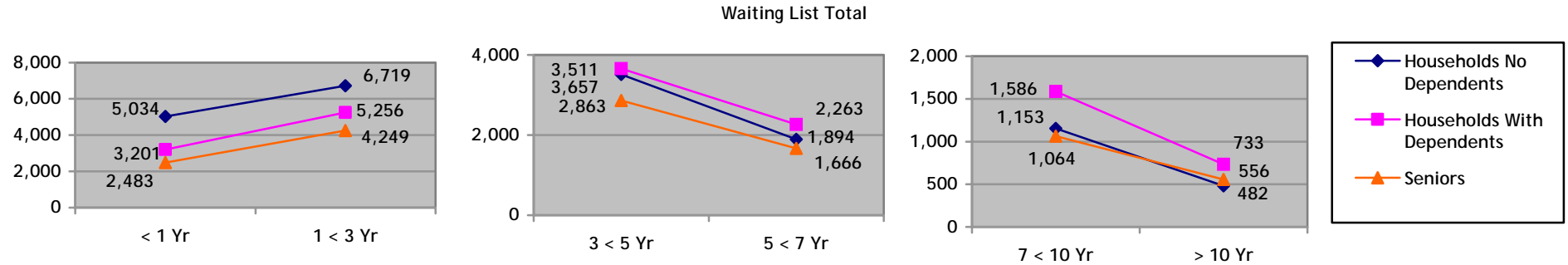
TCHC	Homeless *	Separated Family	Youth	Supportive Housing	Special Needs	Total
Households no Dependents	111	0	2	3	33	149
Households with Dependents	57	3	0	3	8	71
Seniors	48	0	0	7	26	81
Total	216	3	2	13	67	301

Rent Supplement	Homeless *	Separated Family	Youth	Supportive Housing	Special Needs	Total
Households no Dependents	9	0	0	0	3	12
Households With Dependents	6	0	0	0	3	9
Seniors	0	0	0	0	0	0
Total	15	0	0	0	6	21

PNP/CO-OP	Homeless *	Separated Family	Youth	Supportive Housing	Special Needs	Total
Households no Dependents	8	0	1	3	5	17
Households with Dependents	6	0	0	1	4	11
Seniors	8	0	0	0	2	10
Total	22	0	1	4	11	38

Grand Total	253	3	3	17	84	360
--------------------	------------	----------	----------	-----------	-----------	------------

TIME ON ACTIVE WAITING LIST BY HOUSEHOLD TYPE



	< 1 Year			1 up to 3 Years			3 up to 5 Years			5 up to 7 Years			7 up to 10 Years			> 10 Years		
	HND	HWD	SEN	HND	HWD	SEN	HND	HWD	SEN	HND	HWD	SEN	HND	HWD	SEN	HND	HWD	SEN
Room	8	0	1	9	0	0	1	0	0	0	0	0	0	0	0	18	0	1
Bachelor	420	8	184	474	9	234	97	4	85	40	1	17	8	1	7	2	0	2
One Bedroom	4,134	154	2,235	5,527	329	3,921	2,894	221	2,707	1,575	171	1,598	933	128	1,008	401	64	514
Two Bedroom	384	1,876	50	613	2,897	79	391	1,894	61	180	969	43	122	635	41	41	289	37
Three Bedroom	79	998	11	84	1,702	13	110	1,315	7	89	947	5	76	682	6	17	308	1
Four Bedroom	7	130	2	10	280	2	17	204	2	8	164	3	13	131	1	3	68	1
Five Bedroom	2	35	0	2	39	0	1	19	1	2	11	0	1	9	1	0	4	0
Total	5,034	3,201	2,483	6,719	5,256	4,249	3,511	3,657	2,863	1,894	2,263	1,666	1,153	1,586	1,064	482	733	556

- This does not include Households currently at a Pending Status

HND = Households No Dependents
HWD = Households With Dependents
SEN = Seniors