



Quarterly Activity Report

1st Quarter 2007

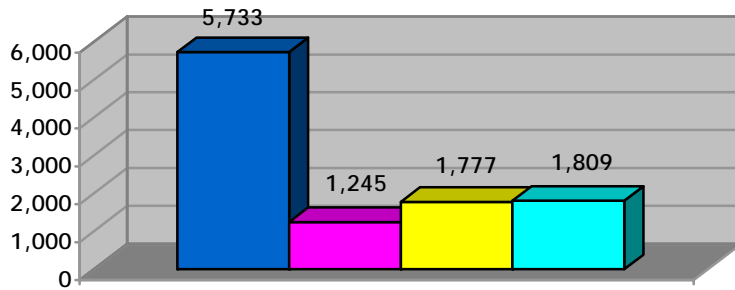
January 1st, 2007 - March 31st, 2007

LEGEND

HND	= Households with no dependents	Bach	= Bachelor unit
HWD	= Households with dependents	1B	= 1 bedroom unit
TCHC	= Toronto Community Housing Corporation	2B	= 2 bedroom unit
PNP	= Private, non-profit housing provider	3B	= 3 bedroom unit
Co-op	= Co-operative housing provider	4B	= 4 bedroom unit
DA	= Disadvantaged households	5B	= 5 bedroom unit
WSIB	= Workplace Safety Insurance Board	W/C	= Wheelchair

SUMMARY OF ACTIVITIES

1st Quarter Active Activities 2007



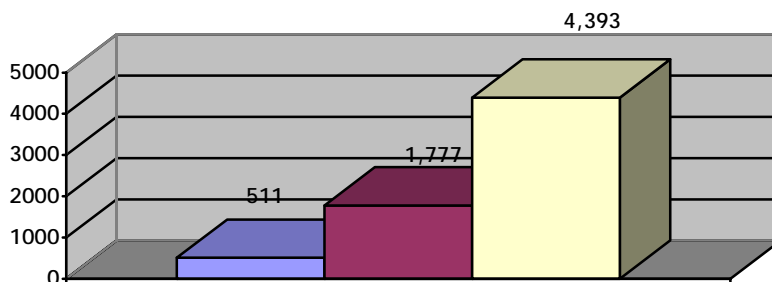
- New & Reactivated Applications
- Applications Housed *
- Active Applications Inactivated
- Active Applications Cancelled

Active	1st Quarter
New & Reactivated Applications	5,703
Applications Housed *	1,245
Active Applications Inactivated	1,777
Active Applications Cancelled	1,809
Active Waiting List**	48,802

* This number includes households housed directly by Providers

** This number includes 9 applications received via the web that as of this date have not been assigned a household type

1st Quarter Inactive Activities 2006



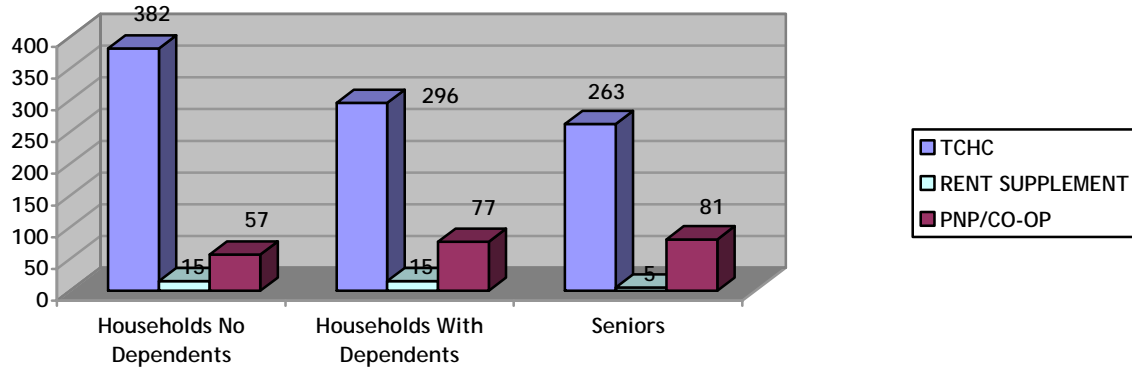
- Reactivated Applications
- Active Applications Inactivated
- Inactive Applications Cancelled

Inactive	1st Quarter
Reactivated Applications	511
Active Applications Inactivated	1,777
Inactive Applications Cancelled	4,393
Inactive Waiting List	16,026

Wait List	1st Quarter
Total Waiting List As At March 31 st , 2007	64,828

FIRST QUARTER 2007 HOUSED ACTIVITIES USING TAWL

1st Quarter Housed Total



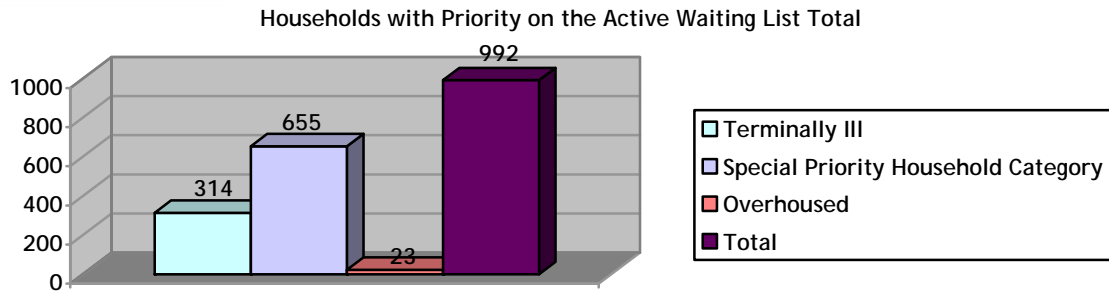
TCHC	Room	Bach	1B	2B	3B	4B	5B+	Total
Households no Dependents	35	164	121	51	10	1	0	382
Households with Dependents	0	8	8	150	98	28	4	296
Seniors	0	197	60	4	2	0	0	263
Total	35	369	189	205	110	29	4	941

Rent Supplement	Room	Bach	1B	2B	3B	4B	5B+	Total
Households no Dependents	0	0	12	3	0	0	0	15
Households with Dependents	0	0	2	12	0	1	0	15
Seniors	0	0	3	2	0	0	0	5
Total	0	0	17	17	0	1	0	35

PNP and CO-OP	Room	Bach	1B	2B	3B	4B	5B+	Total
Households no Dependents	0	13	29	14	1	0	0	57
Households with Dependents	0	0	4	49	20	4	0	77
Seniors	0	8	69	4	0	0	0	81
Total	0	21	102	67	21	4	0	215

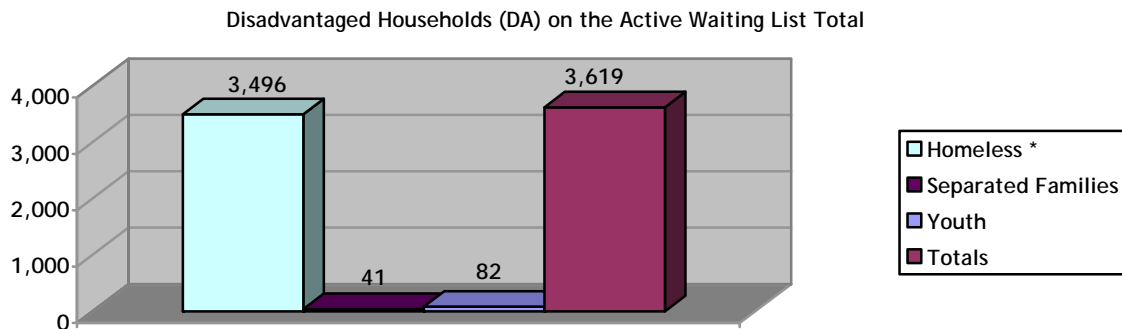
GRAND TOTAL	35	390	308	289	131	34	4	1,191
--------------------	-----------	------------	------------	------------	------------	-----------	----------	--------------

HOUSEHOLDS WITH PRIORITY ON THE ACTIVE WAITING LIST



Type of Priority	Households no Dependents	Households with Dependents	Senior	Total
Terminally III	122	103	89	314
Special Priority Household Category	228	380	47	655
Overhoused	13	7	3	23
Total	363	490	139	992

DISADVANTAGED HOUSEHOLDS (DA) ON THE ACTIVE WAITING LIST

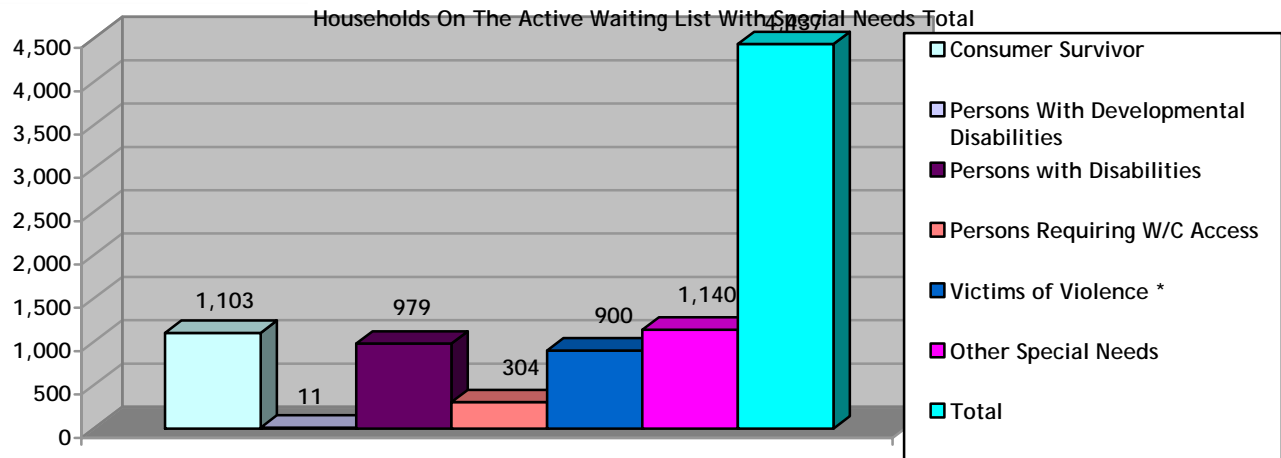


Type of Disadvantaged Household	Households no Dependents	Households with Dependents	Senior	Total
Homeless *	2,481	675	340	3,496
Separated Families	16	25	0	41
Youth	67	15	0	82
Total	2,564	715	340	3,619

* This count does not include SPHC living in Shelters

* This count includes Homeless Newcomers

HOUSEHOLDS ON THE ACTIVE WAITING LIST WITH SPECIAL NEEDS

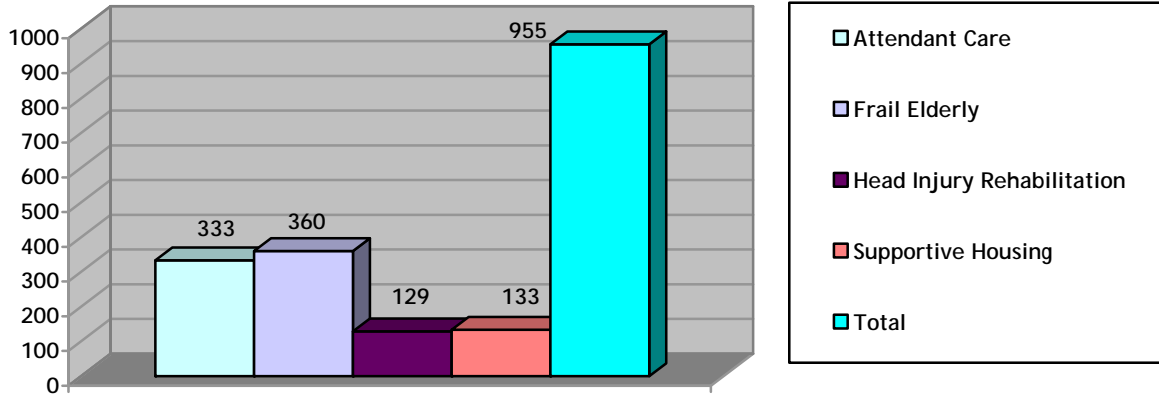


Type of Special Needs Household	Households no Dependents	Households with Dependents	Senior	Total
Consumer Survivor	810	174	119	1,103
Persons With Developmental Disabilities	7	1	3	11
Persons with Disabilities	411	257	311	979
Persons Requiring W/C Access	106	126	72	304
Victims of Violence *	355	459	86	900
Other Special Needs	721	295	124	1,140
Total	2,410	1,312	715	4,437

* This count includes households where S PHC (Special Priority Household Category) has been assigned.

HOUSEHOLDS ON THE ACTIVE WAITING LIST REQUIRING SUPPORTIVE HOUSING

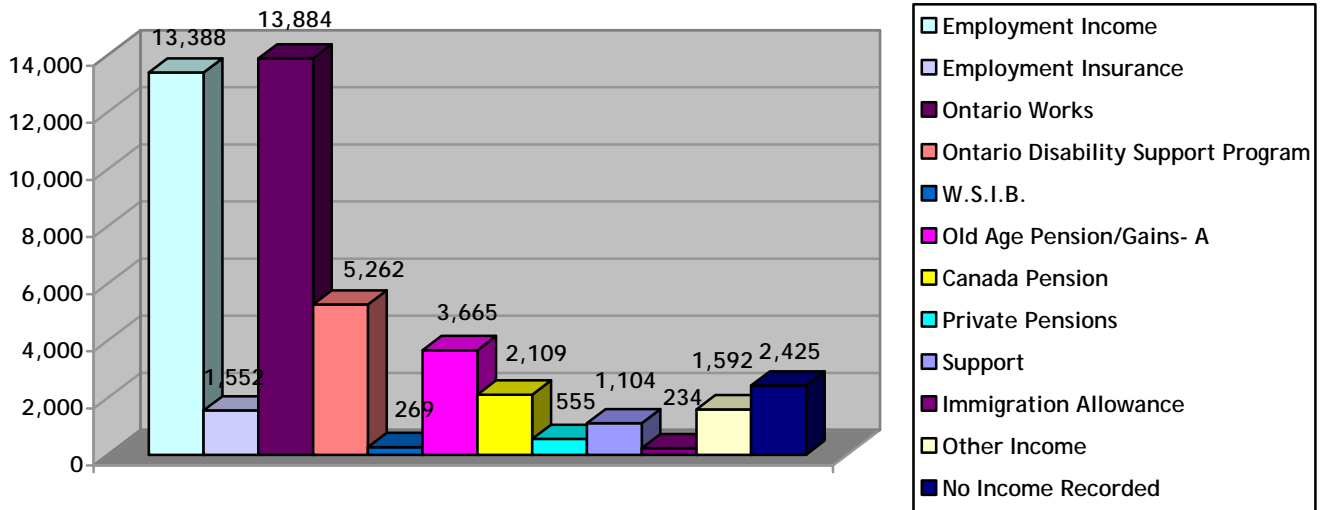
Households On The Active Waiting List Requiring Supportive Housing Total



Type of Supportive Housing	Households no Dependents	Households with Dependents	Senior	Total
Attendant Care	185	54	94	333
Frail Elderly	12	31	317	360
Head Injury Rehabilitation	84	26	19	129
Supportive Housing	70	10	53	133
Total	351	121	483	955

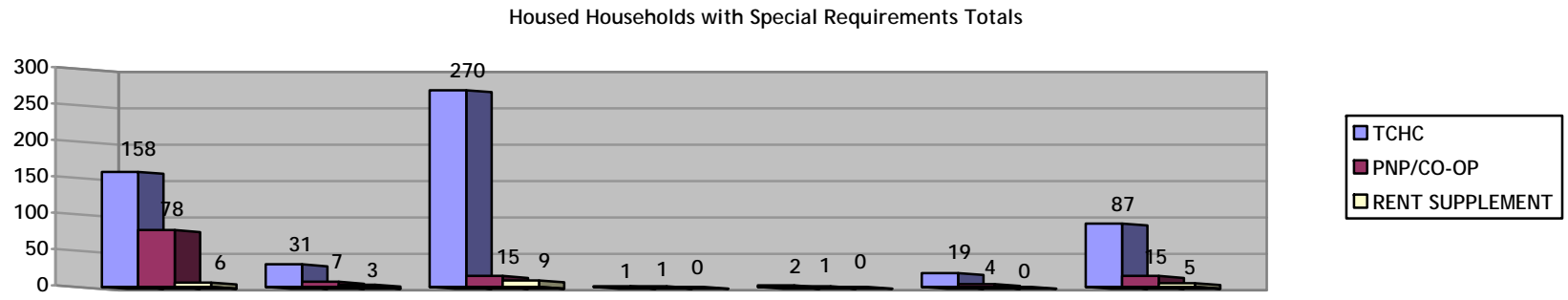
MAJOR INCOME SOURCE BY ACTIVE HOUSEHOLD

Financial Analysis by Active Household Total



Income Type	Households no Dependents	Households with Dependents	Senior	Total
Employment Income	5,749	5,660	1,979	13,388
Employment Insurance	618	748	186	1,552
Ontario Works	6,100	6,160	1,624	13,884
Ontario Disability Support Program	3,093	971	1,198	5,262
W.S.I.B.	116	59	94	269
Old Age Pension/Gains- A	121	186	3,358	3,665
Canada Pension	472	127	1,510	2,109
Private Pensions	73	39	443	555
Support	126	208	770	1,104
Immigration Allowance	77	145	12	234
Other Income	572	501	519	1,592
No Income Recorded	748	1,409	268	2,425
Total	17,865	16,213	11,961	46,039

HOUSED HOUSEHOLDS WITH SPECIAL HOUSING REQUIREMENTS



TCHC	Special Priority Household Category	Terminally III	Homeless *	Separated Family	Youth	Supportive Housing	Special Needs	Total
Households no Dependents	64	13	134	0	1	6	42	260
Households with Dependents	81	10	71	1	1	2	31	197
Seniors	16	8	65	0	0	11	14	114
Total	161	31	270	1	2	19	87	571

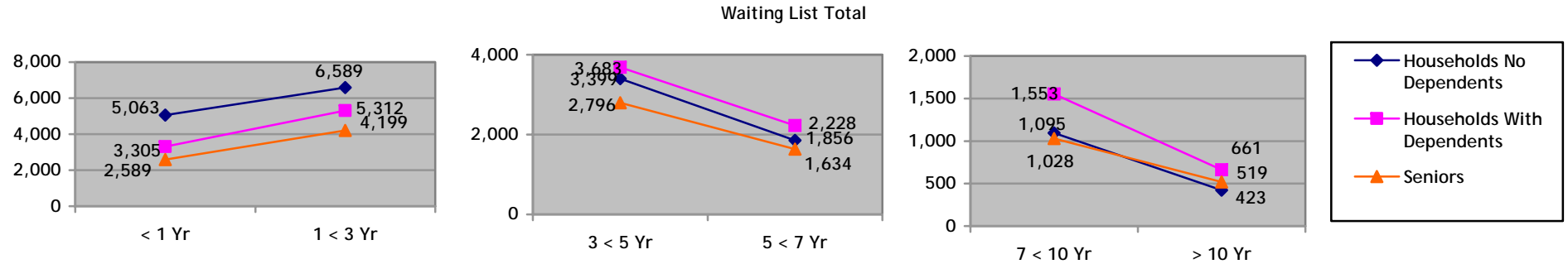
Housing Connections

Rent Supplement	Special Priority Household Category	Terminally III	Homeless *	Separated Family	Youth	Supportive Housing	Special Needs	Total
Households no Dependents	4	2	3	0	0	0	1	10
Households With Dependents	2	0	4	0	0	0	2	8
Seniors	0	1	2	0	0	0	2	5
Total	6	3	9	0	0	0	5	23

PNP/CO-OP	Special Priority Household Category	Terminally III	Homeless *	Separated Family	Youth	Supportive Housing	Special Needs	Total
Households no Dependents	28	1	6	0	1	1	6	43
Households with Dependents	40	1	6	1	0	1	6	55
Seniors	10	5	3	0	0	2	3	23
Total	78	7	15	1	1	4	15	121

Grand Total	242	41	294	2	3	23	107	715
--------------------	------------	-----------	------------	----------	----------	-----------	------------	------------

TIME ON ACTIVE WAITING LIST BY HOUSEHOLD TYPE



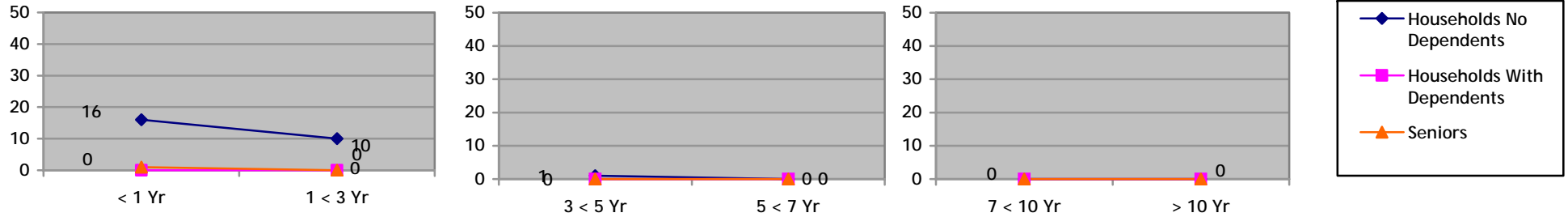
	< 1 Year			1 up to 3 Years			3 up to 5 Years			5 up to 7 Years			7 up to 10 Years			> 10 Years		
	HND	HWD	SEN	HND	HWD	SEN	HND	HWD	SEN	HND	HWD	SEN	HND	HWD	SEN	HND	HWD	SEN
Room	16	0	1	10	0	0	1	0	0	0	0	0	0	0	0	0	0	0
Bachelor	428	9	196	461	11	218	100	1	64	38	1	21	11	1	8	3	0	2
One Bedroom	4,118	154	2,339	5,453	339	3,904	2,772	218	2,659	1,546	167	1,559	879	116	973	362	58	483
Two Bedroom	428	1,927	41	561	2,900	68	405	1,905	61	169	952	48	121	619	40	39	262	32
Three Bedroom	65	1,045	9	91	1,749	8	99	1,331	9	94	935	5	71	676	6	16	275	2
Four Bedroom	7	138	3	11	278	1	22	206	3	8	159	1	13	130	0	3	61	0
Five Bedroom	1	32	0	2	35	0	0	22	0	1	14	0	0	11	1	0	5	0
Total	5,063	3,305	2,589	6,589	5,312	4,199	3,399	3,683	2,796	1,856	2,228	1,634	1,095	1,553	1,028	423	661	519

- This does not include Households currently at a Pending Status

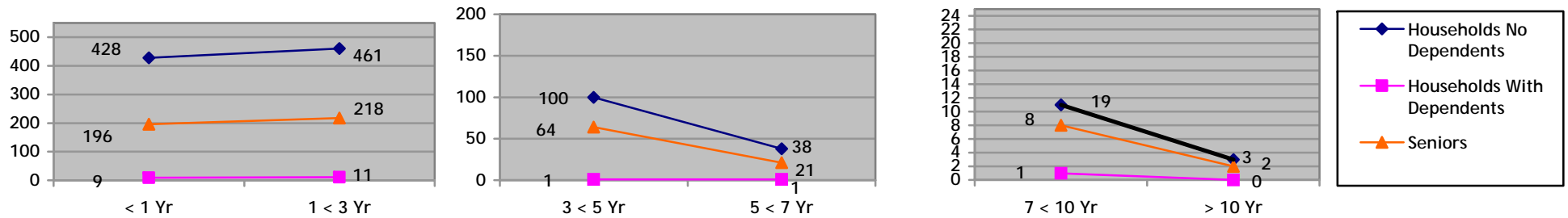
HND = Households No Dependents
 HWD = Households With Dependents
 SEN = Seniors

Housing Connections

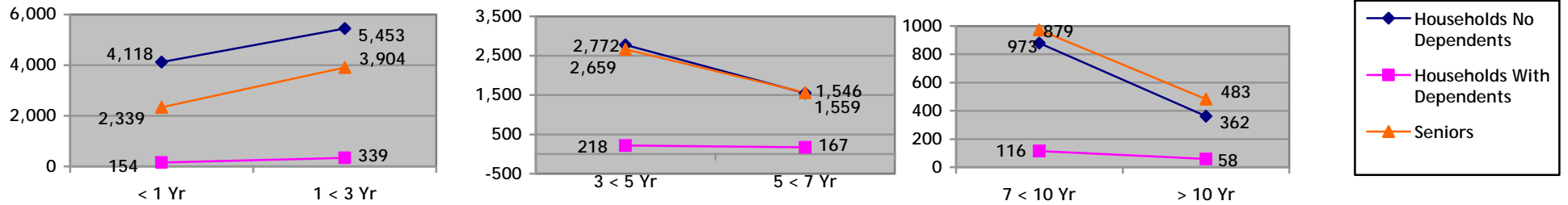
Waiting List Total for Room



Waiting List Total for Bachelor

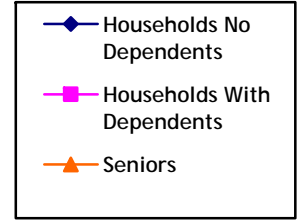
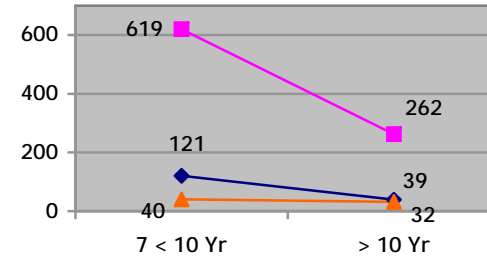
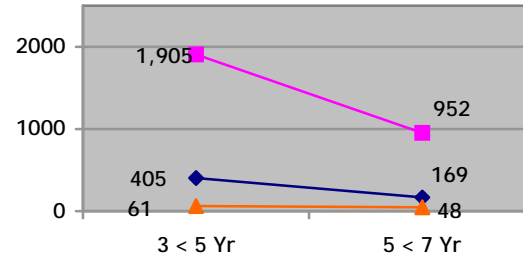
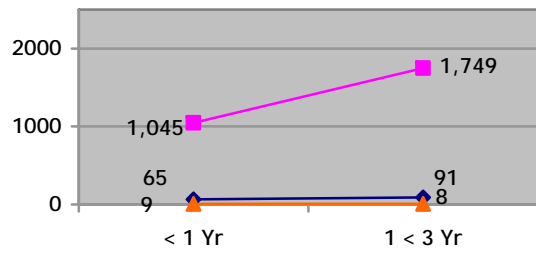


Waiting List Total for One Bedroom

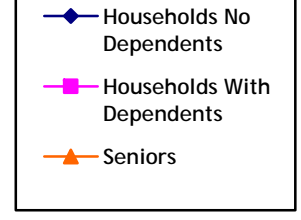
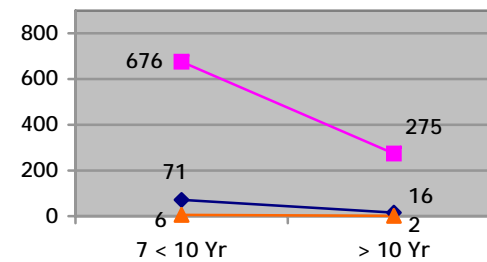
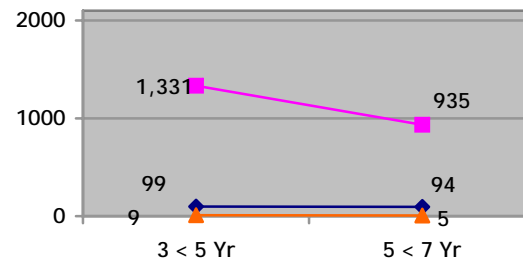
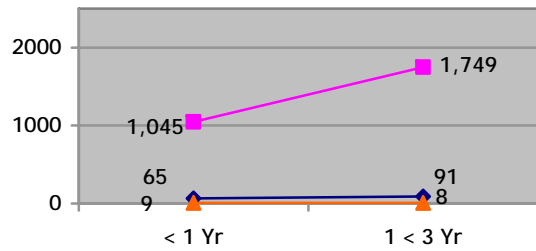


Housing Connections

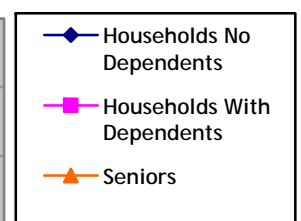
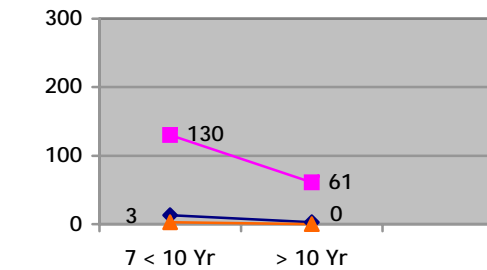
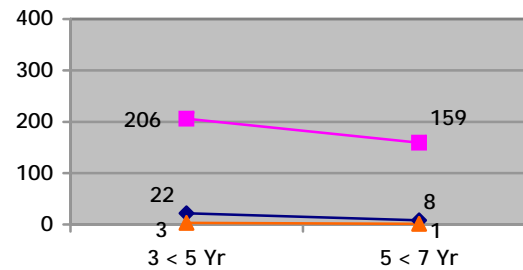
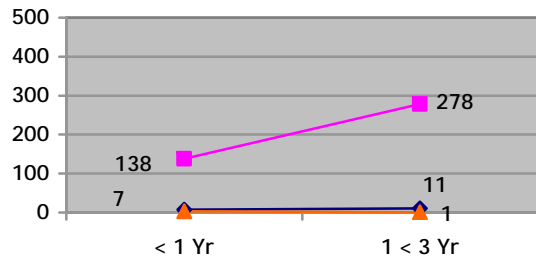
Waiting List Total for Three Bedroom



Waiting List Total for Three Bedroom



Waiting List Total for Four Bedroom



Housing Connections

Waiting List Total for Five Bedroom

