



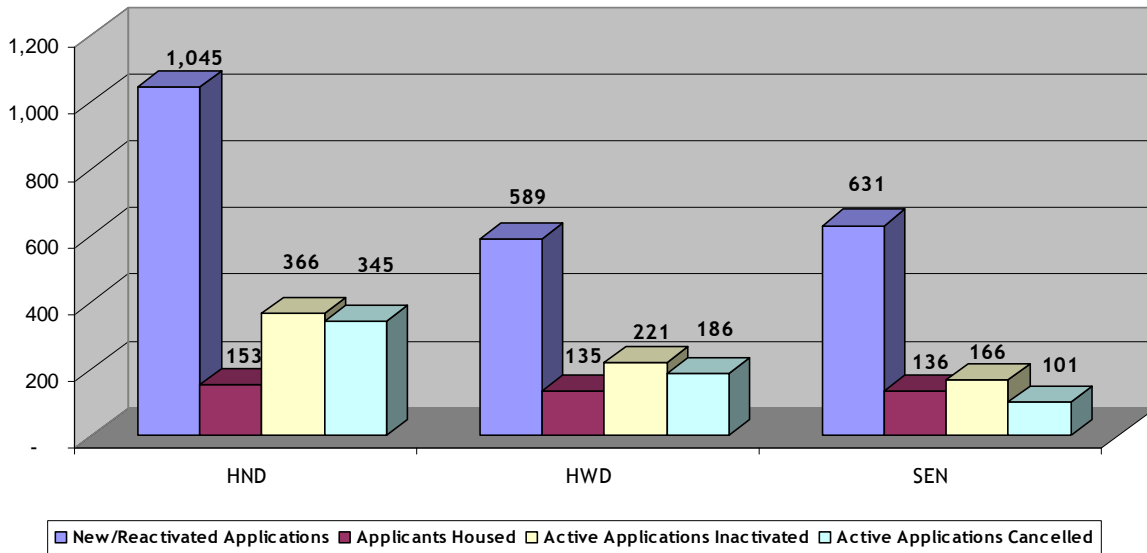
**Monthly
Statistical
Report**

JUNE 2011

SUMMARY OF ACTIVITIES

Total number of people on Housing Connections centralized waiting list for social housing is 146,959 as of June 30, 2011, compared to 145,981 as at May 31, 2011. The rest of the numbers in this Statistical Report refer to household applications which may have several people on their application.

Active Waiting List



Active Waiting List	HND	HWD	SEN	Total
New/Reactivated Applications	1,045	589	631	2,265
Applicants Housed	153	135	136	424
Active Applications Inactivated	366	221	166	753
Active Applications Cancelled	345	186	101	632
Active Applications	27,334	21,297	19,622	68,253

*This number includes households housed directly by providers.

**The number of applications ‘inactivated’ has increased while the number of applications ‘cancelled’ has decreased due to incomplete applications now being inactivated rather than cancelled.

HND – Households with no dependents

HWD – Households with dependents

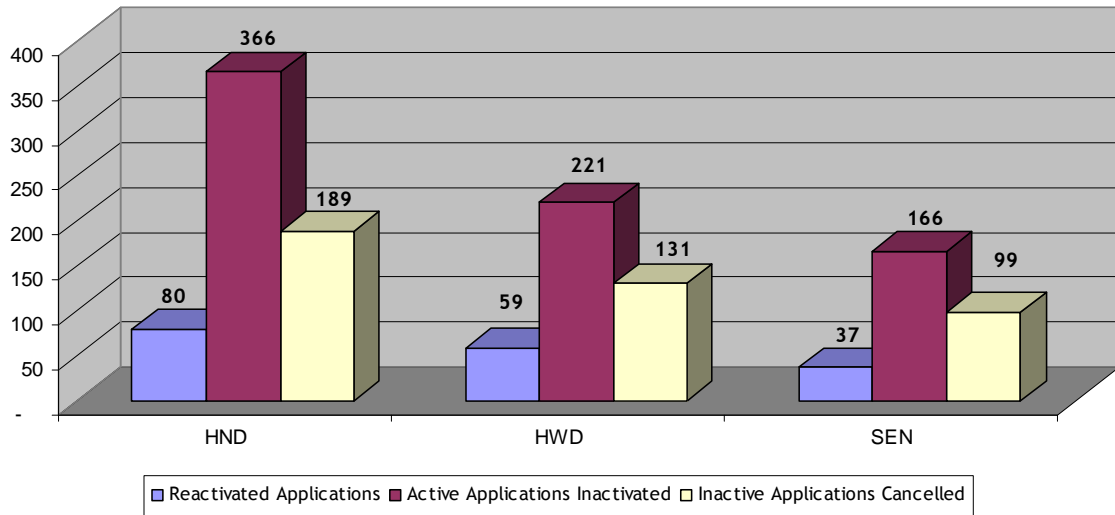
‘Active’ waiting list – on waiting list and ready to be housed

‘Inactive’ waiting list – on waiting list but cannot be housed for any number of reasons i.e. waiting for documents, haven’t heard from applicant, mail returned, no response to requests for confirmation of interest or housing offer withdrawn. Applications can be inactive for up to 24 months (five years for homeless applicants) before being cancelled.

Note: 824 total applications were received through the web for June 2011, compared to 834 received May 2011.

SUMMARY OF ACTIVITIES

Inactive Waiting List



Inactive Waiting List	HND	HWD	SEN	Total
Reactivated Applications	80	59	37	176
Active Applications Inactivated	366	221	166	753
Inactive Applications Cancelled	189	131	99	419
Total Inactive Applications	5,357	3,356	2,252	10,965

Total Waiting List	HND	HWD	SEN	Total
Total Waiting List as at June 30, 2011	32,691	24,653	21,874	79,218
Total Waiting List as at June 30, 2010	30,322	23,775	19,824	73,921

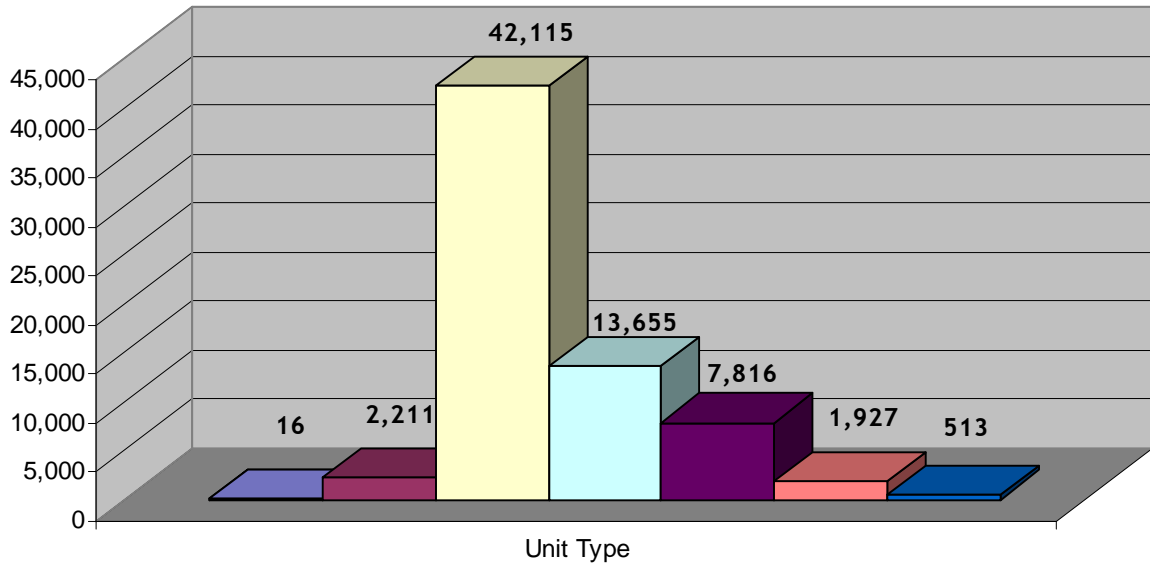
HND = Households with no dependents

HWD = Households with dependents

'Inactive' waiting list – on waiting list but cannot be housed for any number of reasons i.e. waiting for documents, haven't heard from applicant, mail returned, no response to requests for confirmation of interest or housing offer withdrawn. Applications can be inactive for up to 24 months (five years for homeless applicants) before being cancelled.

SUMMARY OF THE ACTIVE WAITING LIST DEMAND BY UNIT TYPE

Demand By Unit Type Totals



■ Room
 ■ Bachelor
 ■ One Bedroom
 ■ Two Bedroom
 ■ Three Bedroom
 ■ Four Bedroom
 ■ Five Bedroom +

*Unit Type indicated is the largest type selected by the applicant.

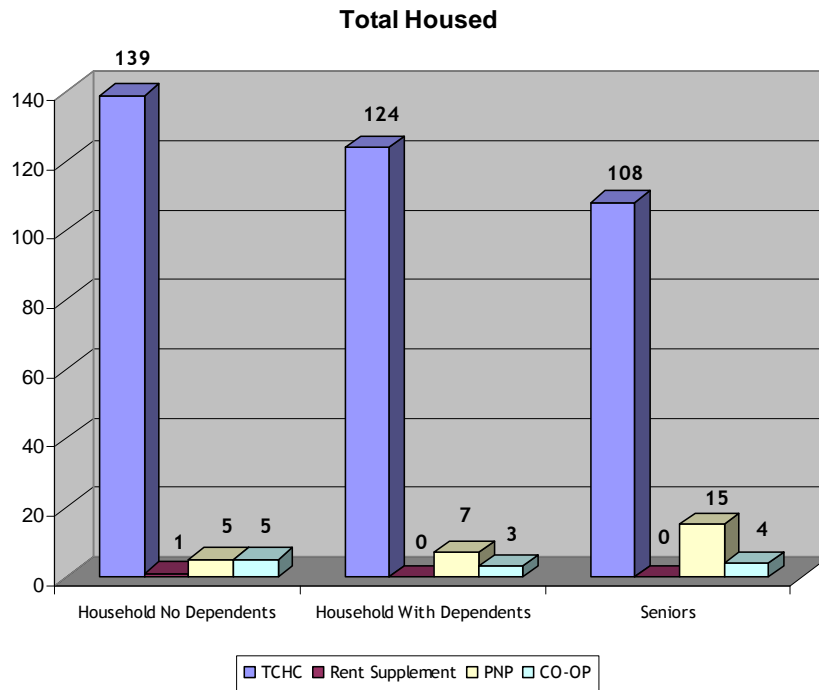
Unit Type	HND	HWD	Senior	Total
Room	12	0	4	16
Bachelor	1,249	3	959	2,211
One Bedroom	23,400	510	18,205	42,115
Two Bedroom	2,368	10,848	439	13,655
Three Bedroom	266	7,541	9	7,816
Four Bedroom	32	1,890	5	1,927
Five Bedroom +	7	505	1	513
Total	27,334	21,297	19,622	68,253

	HND	HWD	Senior	Total
Households Requesting Wheelchair Access	230	94	164	488

HND = Households with no dependents

HWD = Households with dependents

TOTAL HOUSED



TCHC	Room	Bach	1B	2B	3B	4B	5B+	Total	
HND		3	73	47	14	1	1	0	139
HWD		0	1	2	74	34	8	5	124
Senior		0	80	27	0	1	0	0	108
Total		3	154	76	88	36	9	5	371
Rent Supplement	Room	Bach	1B	2B	3B	4B	5B+	Total	
HND		0	0	0	1	0	0	0	1
HWD		0	0	0	0	0	0	0	0
Senior		0	0	0	0	0	0	0	0
Total		0	0	0	1	0	0	0	1
PNP	Room	Bach	1B	2B	3B	4B	5B+	Total	
HND		0	1	4	0	0	0	0	5
HWD		0	0	0	6	1	0	0	7
Senior		0	1	13	1	0	0	0	15
Total		0	2	17	7	1	0	0	27
CO-OP	Room	Bach	1B	2B	3B	4B	5B+	Total	
HND		0	3	1	1	0	0	0	5
HWD		0	0	0	2	1	0	0	3
Senior		0	0	4	0	0	0	0	4
Total		0	3	5	3	1	0	0	12

HND = Households with no dependents
 HWD = Households with dependents

PNP = Private Non Profit

TOTALS HOUSED IN PRIVATE NON PROFIT AND CO-OP PROVIDERS

Providers	Room	Bach	1B	2B	3B	4B	5B+	Total
55 HOWARD PARK AVENUE CO-OPERATIVE HOMES INC		2						2
AKWA HONSTA NON-PROFIT ABORIGINAL HOMES INC.				1				1
ALMISE CO-OPERATIVE HOMES INC			2					2
ATKINSON HOUSING CO-OP				1				1
B'NAI BRITH UPPER CANADA LODGE			1					1
BAZAAR NON-PROFIT HOUSING CORPORATION			1	1				2
CITY PARK CO-OPERATIVE APARTMENTS INC		1						1
CLINTWOOD NON-PROFIT HOUSING CO-OPERATIVE				1				1
DOROTHY KLEIN SENIORS HOUSING INC			2	1				3
ESTONIAN RELIEF COMMITTEE NON-PROFIT RESIDENCES CORP				1				1
HARBOUR CHANNEL HOUSING CO-OP INC					1			1
HARRY SHERMAN CROWE HOUSING CO-OP INC.				1				1
HELLENIC HOME FOR THE AGED INC			2					2
LAKESHORE VILLAGE ARTISTS CO-OP			1					1
MARGARET LAURENCE HOUSING CO-OPERATIVE			2					2
MASARYKTOWN NON-PROFIT RESIDENCES INC.					1			1
PERFORMING ARTS LODGES OF CANADA			1					1
RAKOCZI VILLA NON PROFIT HOUSING CORP.		1	1					2
RICHVIEW BAPTIST FOUNDATION			1					1
ST MATTHEW'S BRACONDALE HOUSE			1					1
ST PAUL'S L'AMOREAUX CENTRE		1	1					2
STS PETER AND PAUL UKRAINIAN COMMUNITY HOMES			4					4
TERRA BELLA NON PROFIT HOUSING CORPORATION				3				3
VINCENT PAUL FAMILY HOMES CORPORATION			1					1
YEE HONG CHINESE EVERGREEN NON-PROFIT HOMES CORP.			1					1
TOTAL	0	5	22	10	2	0	0	39

SUMMARY OF VACANCY ACTIVITY

Provider	As of last month	New	Cancelled	Offered	Accepted	As of this month
TCHC	667	394	84	842	352	635
RS	13	3	0	5	1	13
PNP	73	47	15	73	27	78
CO-OP	39	30	18	25	12	39
Totals	792	474	117	945	392	765

TCHC = Toronto Community Housing Corporation

RS = Rent Supplement

PNP = Private Non-Profit Housing Provider

CO-OP = Co-operative Housing Provider

Housing Provider = Landlord or Building Owner

TOTAL NUMBER OF HOUSEHOLDS HOUSED WITH SPECIAL HOUSING REQUIREMENTS

TCHC	SPHC	Terminally Ill	Over Housed	Homeless	Separated Family	Youth	Supportive Housing	Special Needs	Total
HND	37	5	0	30	0	0	1	14	87
HWD	45	1	1	12	1	0	1	4	65
Senior	3	6	0	25	0	0	5	5	44
Total	85	12	1	67	1	0	7	23	196
Rent Supplement	SPHC	Terminally Ill	Over Housed	Homeless	Separated Family	Youth	Supportive Housing	Special Needs	Total
HND	0	1	0	0	0	0	0	0	1
HWD	0	0	0	0	0	0	0	0	0
Senior	0	0	0	0	0	0	0	0	0
Total	0	1	0	0	0	0	0	0	1
PNP/CO-OP	SPHC	Terminally Ill	Over Housed	Homeless	Separated Family	Youth	Supportive Housing	Special Needs	Total
HND	4	0	0	2	0	0	0	3	9
HWD	9	0	0	1	0	0	0	0	10
Senior	5	2	0	2	0	0	1	0	10
Total	18	2	0	5	0	0	1	3	29
Grand Total	103	15	1	72	1	0	8	26	226

RS = Rent Supplement
 PNP = Private Non-Profit Provider
 CO-OP = Co-operative Housing Provider

HWD = Households with dependents
 SPHC = Special Priority Housing Category