



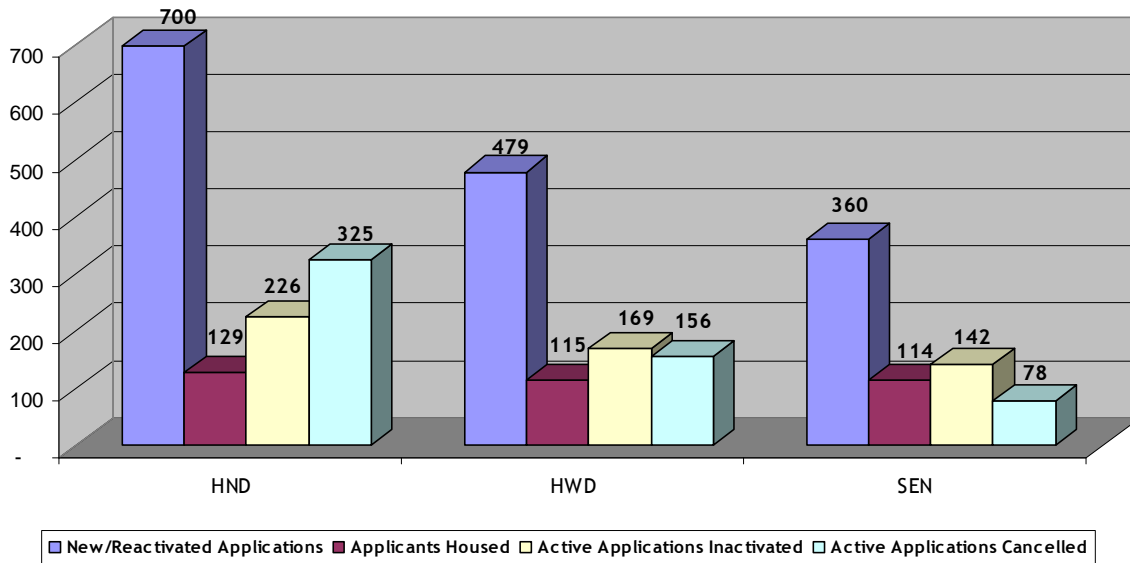
**Monthly
Statistical
Report**

April 2011

SUMMARY OF ACTIVITIES

Total number of people on Housing Connections centralized waiting list for social housing is 145,499 as of April 30, 2011, compared to 145,419 as at March 31, 2011. The rest of the numbers in this Statistical Report refer to household applications which may have several people on their application.

Active Waiting List



Active Waiting List	HND	HWD	SEN	Total
New/Reactivated Applications	700	479	360	1,539
Applicants Housed*	129	115	114	358
Active Applications Inactivated**	226	169	142	537
Active Applications Cancelled**	325	156	78	559
Active Applications	27,091	21,268	19,355	67,714

*This number includes households housed directly by providers.

**The number of applications ‘inactivated’ has increased while the number of applications ‘cancelled’ has decreased due to incomplete applications now being inactivated rather than cancelled.

HND – Households with no dependents

HWD – Households with dependents

‘Active’ waiting list – on waiting list and ready to be housed

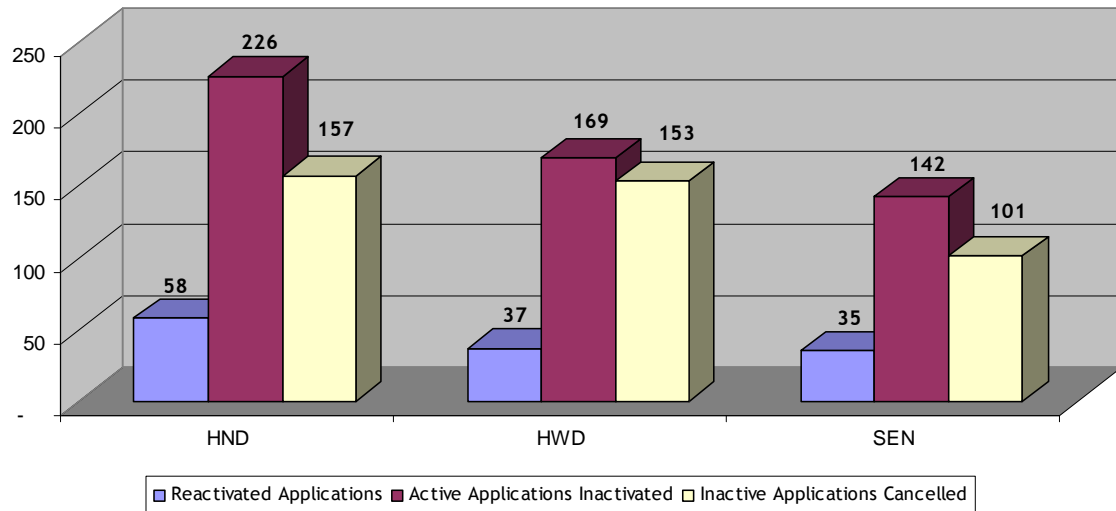
‘Inactive’ waiting list – on waiting list but cannot be housed for any number of reasons i.e. waiting for documents, haven’t heard from applicant, mail returned, no response to requests for confirmation of interest or housing offer withdrawn. Applications can be inactive for up to 24 months (five years for homeless applicants) before being cancelled.

Housing Connections

Note: 787 total applications were received through the web for April 2011, compared to 861 received March 2011.

SUMMARY OF ACTIVITIES

Inactive Waiting List



Inactive Waiting List	HND	HWD	SEN	Total
Reactivated Applications	52	37	35	124
Active Applications Inactivated	226	169	142	537
Inactive Applications Cancelled	157	153	101	411
Total Inactive Applications	5,137	3,255	2,168	10,560

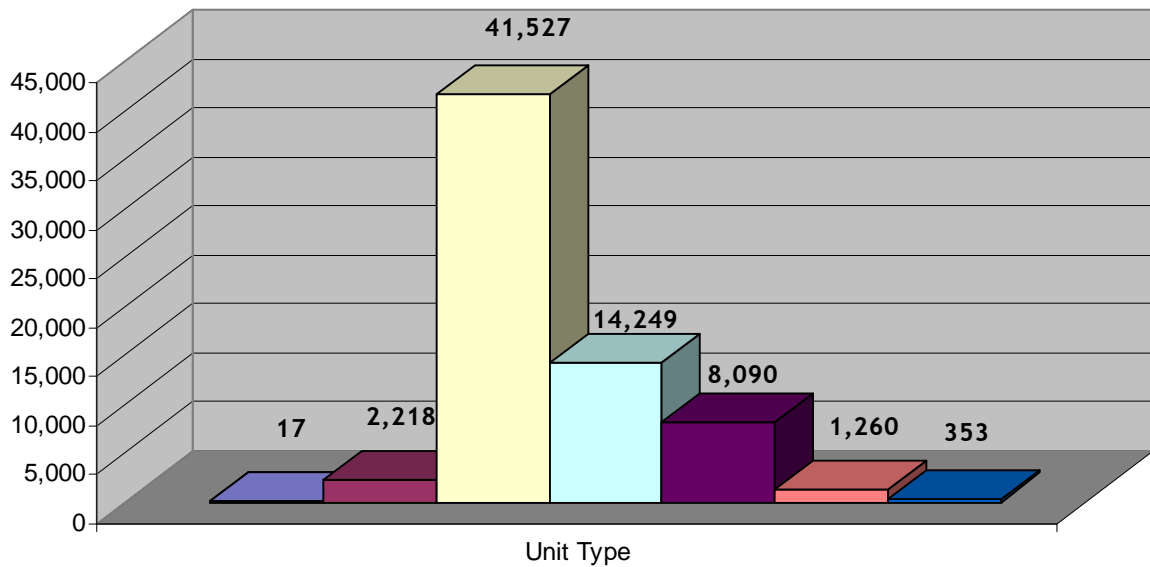
Total Waiting List	HND	HWD	SEN	Total
Total Waiting List as at April 30, 2011	32,228	24,523	21,523	78,274
Total Waiting List as at April 30, 2010	29,712	24,174	18,990	72,876

HND = Households with no dependents
HWD = Households with dependents

'Inactive' waiting list – on waiting list but cannot be housed for any number of reasons i.e. waiting for documents, haven't heard from applicant, mail returned, no response to requests for confirmation of interest or housing offer withdrawn. Applications can be inactive for up to 24 months (five years for homeless applicants) before being cancelled.

SUMMARY OF THE ACTIVE WAITING LIST DEMAND BY UNIT TYPE

Demand By Unit Type Totals



■ Room
 ■ Bachelor
 ■ One Bedroom
 ■ Two Bedroom
 ■ Three Bedroom
 ■ Four Bedroom
 ■ Five Bedroom +

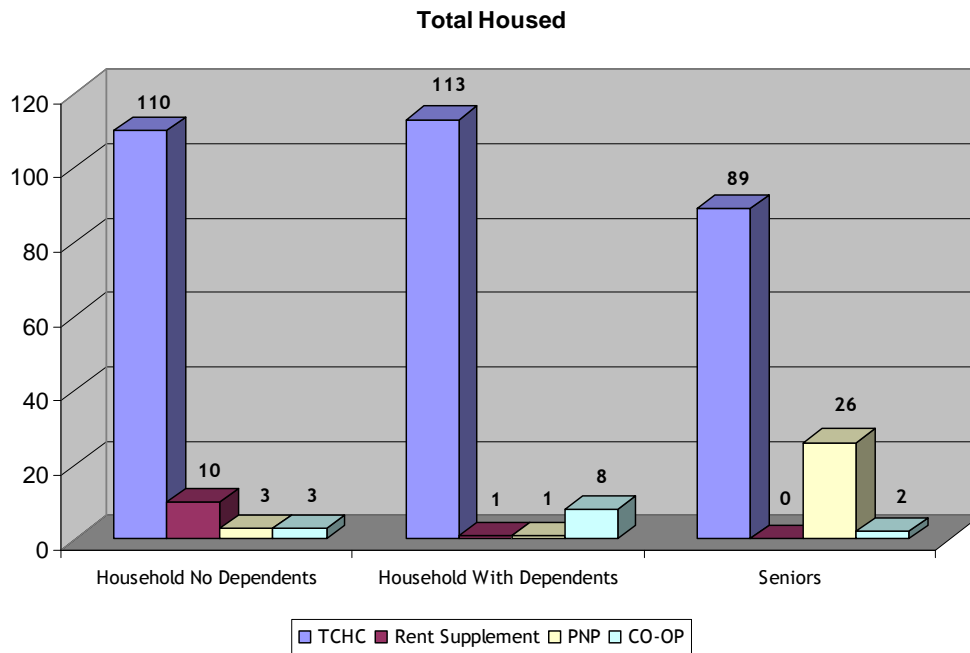
Unit Type	HND	HWD	Senior	Total
Room	14	0	3	17
Bachelor	1,273	3	942	2,218
One Bedroom	23,110	461	17,956	41,527
Two Bedroom	2,288	11,541	420	14,249
Three Bedroom	234	7,850	6	8,090
Four Bedroom	22	1,238	0	1,260
Five Bedroom +	150	175	28	353
Total	27,091	21,268	19,355	67,714

*Unit Type indicated is the largest type selected by the applicant.

	HND	HWD	Senior	Total
Households Requesting Wheelchair Access	234	93	171	498

HND = Households with no dependents
 HWD = Households with dependents

TOTAL HOUSED



TCHC	Room	Bach	1B	2B	3B	4B	5B+	Total
HND	4	54	36	11	4	1	0	110
HWD	0	0	2	35	36	13	3	89
Senior	0	67	16	0	0	0	0	83
Total	4	121	54	46	40	14	3	282

Rent Supplement	Room	Bach	1B	2B	3B	4B	5B+	Total
HND	0	0	5	0	0	0	0	5
HWD	0	0	0	3	3	0	0	6
Senior	0	0	0	0	0	0	0	0
Total	0	0	5	3	3	0	0	11

PNP	Room	Bach	1B	2B	3B	4B	5B+	Total
HND	0	1	3	1	0	0	0	5
HWD	0	0	0	6	0	1	0	7
Senior	0	3	23	2	0	0	0	28
Total	0	4	26	9	0	1	0	40

CO-OP	Room	Bach	1B	2B	3B	4B	5B+	Total
HND	0	2	3	1	0	0	0	6
HWD	0	0	0	6	1	1	0	8
Senior	0	0	2	0	0	0	0	2
Total	0	2	5	7	1	1	0	16

HND = Households with no dependents
 HWD = Households with dependents

PNP = Private Non Profit

Housing Connections

TOTALS HOUSED IN PRIVATE NON PROFIT AND CO-OP PROVIDERS								
Providers	Room	Bach	1B	2B	3B	4B	5B+	Total
ACLI ETOBICOKE COMMUNITY HOMES				1				1
AKWA HONSTA NON-PROFIT ABORIGINAL HOMES INC.		1						1
ALMISE CO-OPERATIVE HOMES INC			2					2
B'NAI BRITH CANADA			2					2
BAZAAR NON-PROFIT HOUSING CORPORATION				2				2
BELLO HORIZONTE NON-PROFIT HOMES CORP						1		1
BONAR-PARKDALE SENIOR CITIZENS NON-PROFIT HOUSING CORP			1					1
BRIMELL COURT CO-OPERATIVE					1			1
CENTRAL KING SENIORS RESIDENCE			1					1
CHURCH OF ATONEMENT ALDERWOOD SENIOR CITIZENS PROJECT			1					1
CITY PARK CO-OPERATIVE APARTMENTS INC		2						2
DOROTHY KLEIN SENIORS HOUSING INC			1					1
ESTONIAN RELIEF COMMITTEE NON-PROFIT RESIDENCES CORP			1					1
FAMILY ACTION NETWORK HOUSING CORPORATION ONTARIO				1				1
GRACE COMMUNITIES CORPORATION SCARBOROUGH			2					2
HARBOUR CHANNEL HOUSING CO-OP INC			2	1				3
HARMONY CO-OPERATIVE HOMES INC				1				1
HUMBERVALE CHRISTIAN OUTREACH FOUNDATION INC			1					1
INTERFAITH HOMES CENTENARY CORPORATION			2					2
JACK GOODLAD SENIOR CITIZEN RESIDENCES CORPORATION				1				1
KINGSWAY-LAMBTON HOMES FOR SENIORS INC.			2					2
MAPLE LEAF DRIVE SENIORS NON-PROFIT RESIDENTIAL CORPORATION			1					1
MASARYKTOWN NON-PROFIT RESIDENCES INC.				1				1
MASCOT PLACE CO-OPERATIVE HOMES INCORPORATED				1				1
MIMICO CO-OPERATIVE HOMES INC.				1		1		2
NORTHMINSTER RESIDENCES OF TORONTO			1					1
ORCHARD GROVE HOUSING CO-OPERATIVE INC.				1				1
OWN HOUSING CO-OPERATIVE INC.			1					1
RAKOCZI VILLA NON PROFIT HOUSING CORP.			3					3
REXDALE PRESBYTERIAN SENIOR CITIZENS CORPORATION			2					2
SECORD AVENUE CO-OPERATIVE HOMES				2				2
ST DEMETRIUS UKRAINIAN DEVELOPMENT CORPORATION		1						1
ST MATTHEW'S BRACONDAL HOUSE			1					1
ST PAUL'S L'AMOREAUX CENTRE		2	1					3
TERRA BELLA NON PROFIT HOUSING CORPORATION				1				1
TOBIAS HOUSE OF TORONTO-CARING IN THE SPIRIT OF ST FRANCIS			1					1
WESTMINSTER COURT SENIOR CITIZENS HOUSING CORP EAST YORK			1					1
WIGWAMEN INCORPORATED				1				1
YEE HONG CHINESE EVERGREEN NON-PROFIT HOMES CORP.			1	1				2
TOTAL	0	6	31	16	1	2	0	56

SUMMARY OF VACANCY ACTIVITY

Provider	As of last month	New	Cancelled	Offered	Accepted	As of this month
TCHC	556	495	72	791	293	690
RS	33	5	4	15	11	10
PNP	82	52	17	100	40	77
CO-OP	39	18	8	23	16	34
Totals	710	570	101	929	360	811

TCHC = Toronto Community Housing Corporation
RS = Rent Supplement
PNP = Private Non-Profit Housing Provider
CO-OP = Co-operative Housing Provider
Housing Provider = Landlord or Building Owner

TOTAL NUMBER OF HOUSEHOLDS HOUSED WITH SPECIAL HOUSING REQUIREMENTS

TCHC	SPHC	Terminally Ill	Over Housed	Homeless	Separated Family	Youth	Supportive Housing	Special Needs	Total
HND	29	5	0	31	0	0	3	13	81
HWD	36	0	0	11	0	0	1	8	56
Senior	5	2	0	9	0	0	1	4	21
Total	70	7	0	51	0	0	5	25	158
Rent Supplement	SPHC	Terminally Ill	Over Housed	Homeless	Separated Family	Youth	Supportive Housing	Special Needs	Total
HND	5	0	0	0	0	0	0	0	5
HWD	3	1	0	1	0	0	0	0	5
Senior	0	0	0	0	0	0	0	0	0
Total	8	1	0	1	0	0	0	0	10
PNP/CO-OP	SPHC	Terminally Ill	Over Housed	Homeless	Separated Family	Youth	Supportive Housing	Special Needs	Total
HND	8	0	0	1	0	0	0	0	9
HWD	14	0	0	0	0	0	0	0	14
Senior	7	1	0	1	0	0	0	3	12
Total	29	1	0	2	0	0	0	3	35
Grand Total	107	9	0	54	0	0	5	28	203

RS = Rent Supplement
 PNP = Private Non-Profit Provider
 CO-OP = Co-operative Housing Provider

HWD = Households with dependents
 SPHC = Special Priority Housing Category