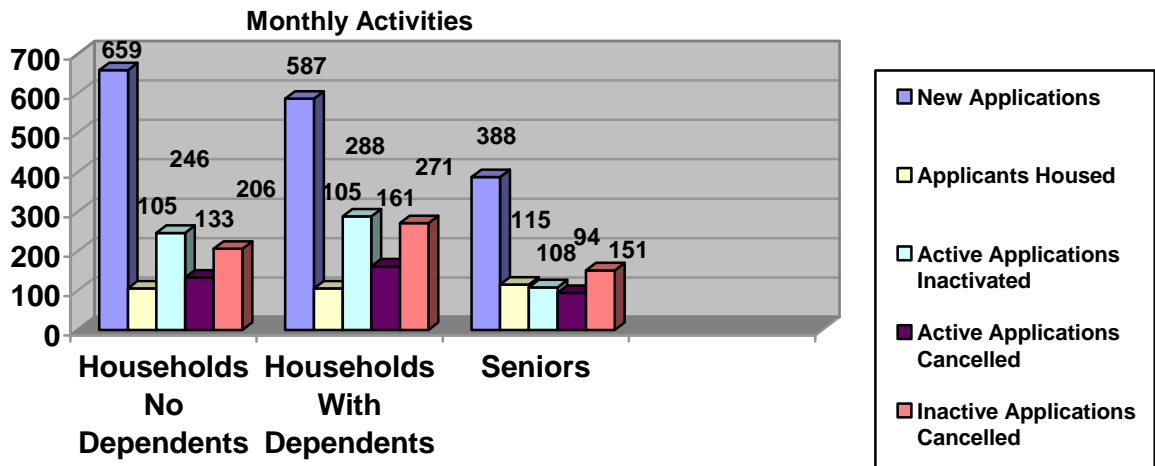




MONTHLY REPORT

January 2005

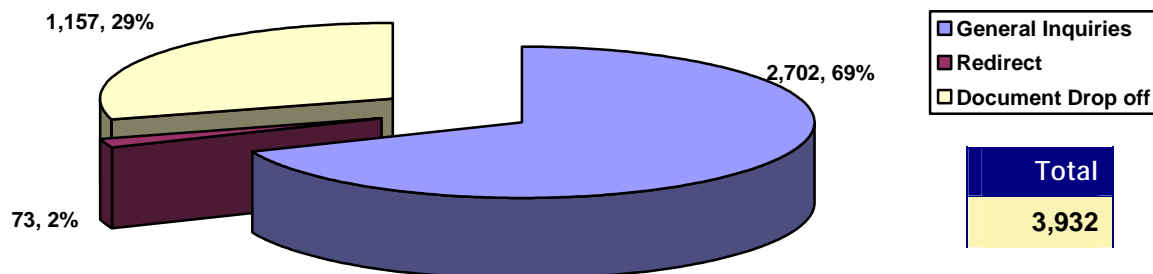
SUMMARY OF ACTIVITIES



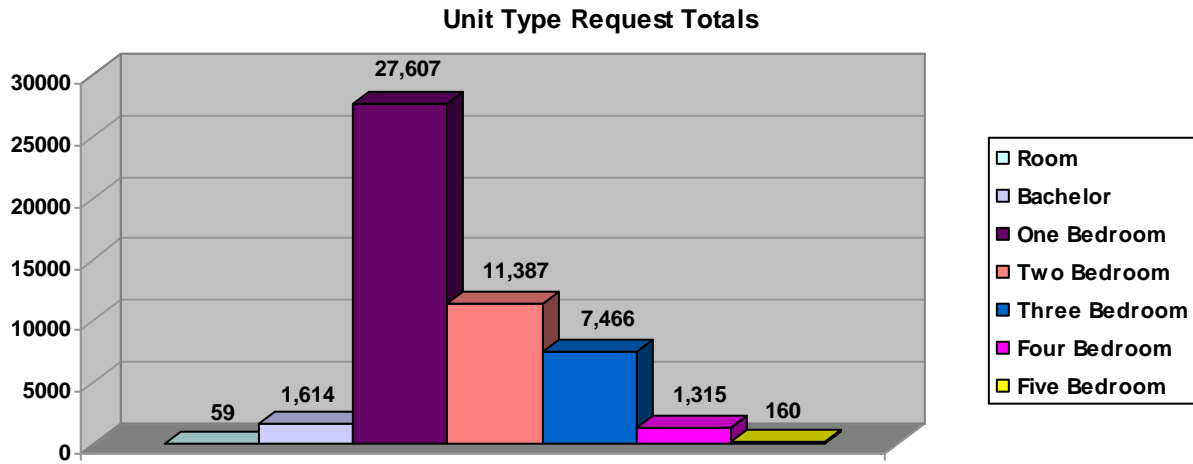
	Households no Dependents	Households With Dependents	Senior	Total
Waiting List As At Jan. 1 st	23,499	25,499	14,793	63,791
New/Reactivated Applications	659	587	388	1,634
Applicants Housed *	105	105	115	325
Active Applications Inactivated	246	288	108	642
Active Applications Cancelled	133	161	94	388
Inactive Applications Cancelled	206	271	151	628
Total Active Applications	18,061	19,204	12,343	49,608
Total Inactive Applications	5,600	6,281	2,458	14,339
Waiting List As At Jan. 31 th	23,661	25,485	14,801	63,947

* Includes Households housed directly by Providers.

LOBBY ACTIVITIES



SIZE OF ACTIVE WAITING LIST

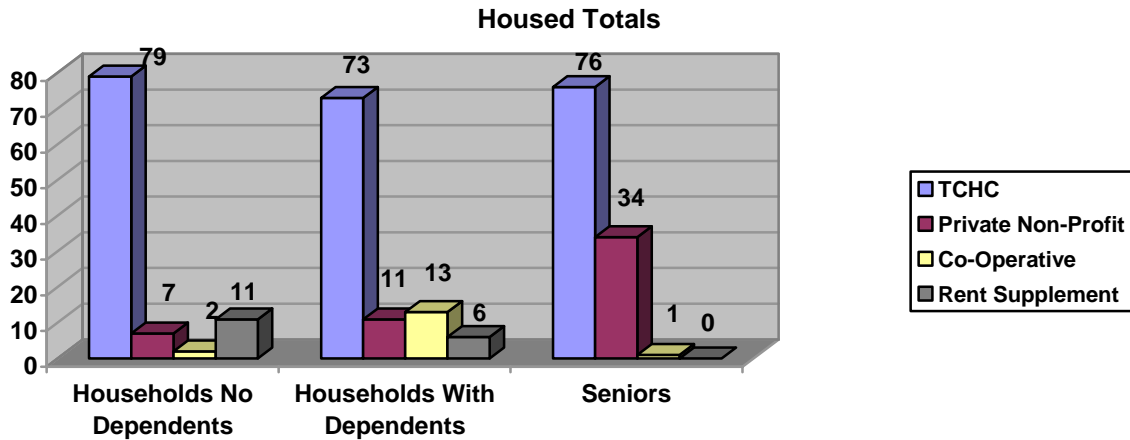


Unit Type	Households no Dependents	Households With Dependents	Senior	Total
Room	57	0	2	59
Bachelor	1,064	17	533	1,614
One Bedroom	14,955	1,212	11,440	27,607
Two Bedroom	1,534	9,517	336	11,387
Three Bedroom	379	7,055	32	7,466
Four Bedroom	64	1,251	0	1,315
Five Bedroom	8	152	0	160
Totals	18,061	19,204	12,343	49,608

Unit Type is from the largest types selected by the client.

	Households no Dependents	Households With Dependents	Senior	Total
Households Requesting Wheelchair Access	227	178	189	594

HOUSED ACTIVITIES



TCHC	Room	Bach	1B	2B	3B	4B	5B+	Total
Households no Dependents	3	37	29	9	1	0	0	79
Households With Dependents	0	1	5	37	23	6	1	73
Seniors	0	51	24	1	0	0	0	76
Totals	3	89	58	47	24	6	1	228

RENT SUPPLEMENT	Room	Bach	1B	2B	3B	4B	5B+	Total
Households no Dependents	0	0	8	3	0	0	0	11
Households With Dependents	0	0	0	2	4	0	0	6
Seniors	0	0	0	0	0	0	0	0
Totals	0	0	8	5	4	0	0	17

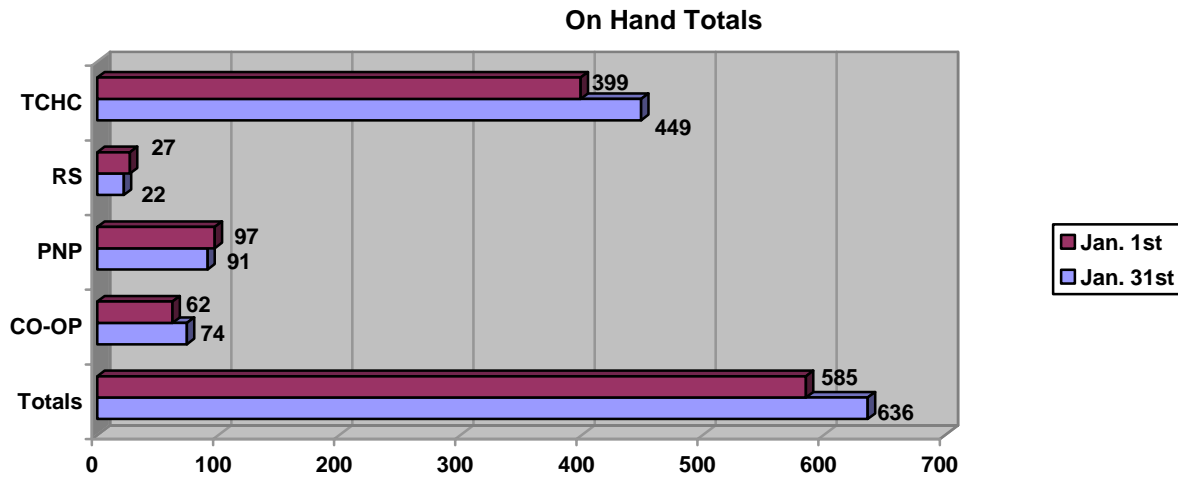
PNP	Room	Bach	1B	2B	3B	4B	5B+	Total
Households no Dependents	0	1	5	1	0	0	0	7
Households With Dependents	0	0	0	10	1	0	0	11
Seniors	0	10	20	4	0	0	0	34
Totals	0	11	25	15	1	0	0	52

CO-OP	Room	Bach	1B	2B	3B	4B	5B+	Total
Households no Dependents	0	0	1	1	0	0	0	2
Households With Dependents	0	0	0	8	1	4	0	13
Seniors	0	0	1	0	0	0	0	1
Totals	0	0	2	9	1	4	0	16

HOUSED PNP and CO-OP PROVIDERS

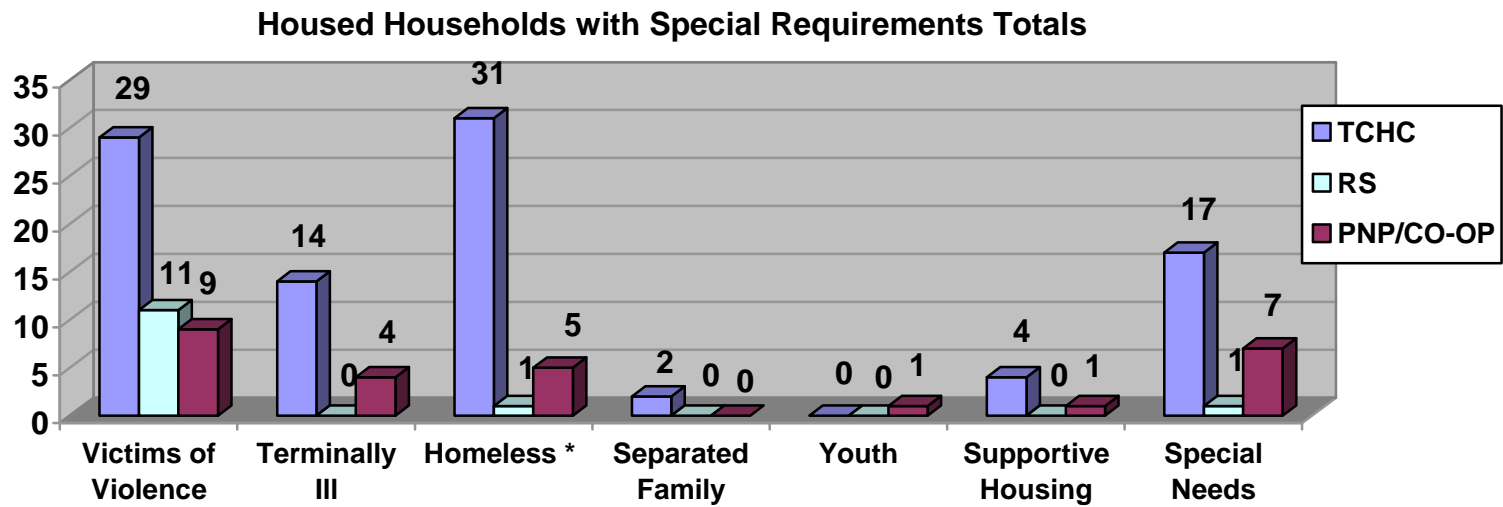
Providers	Room	Bach	1B	2B	3B	4B	5B+	Total
ACLI Etobicoke Community Homes			1	1				2
Aldebrain Attendant Care Services			1	4				5
Andrejs Management (Bruckland)					1			1
Atkinson Housing Co-op				1		4		5
Barsa Kelly Cari-Can Co-operative Homes Inc.			1					1
Church of Atonement Alderwood Senior Citizens Project			5					5
Estonian Relief Committee Non-Profit Residences				1				1
Glen Gardens Housing Co-operative Inc.				1				1
Hellenic Home for the Aged Inc.			5					5
Humbervale Christian Outreach Foundation			1					1
Jack Goodlad Senior Citizens Residences Corp			1					1
Kehilla Residential Program				2				2
Les Centres D'Accueil Heritage			2					2
Operating Engineers Local 793 Non-Profit Housing				3				3
Salvador Del Mundo/Upwood Park				3				3
St. David's Village		6						6
St. Matthew's Bracondale House			1					1
Stanchester Charitable Foundation			4					4
Tamil Co-operative Homes Inc				4	1			5
Terra Bella Non-Profit Housing Corporation				2				2
The Archdiocese of Toronto			1					1
The Brotherhood Foundation		2						2
Thorncliffe Park Co-operative Homes			1					1
Tobias House of Toronto - Caring in the Spirit of St. Francis			2					2
Vila Luso Non Profit Housing Corp.		3						3
Villa Otthon Non-Profit Corp.				1				1
Vincent Paul Family Homes Corporation				1				1
Woodgreen Community Homes			1					1
Totals	0	11	27	24	2	4	0	68

SUMMARY OF VACANCY ACTIVITY



Provider	On Hand as of Jan 1 st 2004	New	Cancelled	Offered	Accepted	On Hand as of Jan 30 th 2004
TCHC	399	402	68	675	286	449
RS	27	15	2	29	17	22
PNP	97	68	22	120	52	91
CO-OP	62	34	7	60	16	74
Totals	585	519	99	884	371	636

HOUSED HOUSEHOLDS WITH SPECIAL HOUSING REQUIREMENTS



* This does not include Victims of Violence living in shelters

Housing Connections

TCHC	Victims of Violence (SPP)	Terminally III	Homeless *	Separated Family	Youth	Supportive Housing	Special Needs	Total
Households no Dependents	10	8	13	0	0	2	6	39
Households With Dependents	15	3	10	2	0	0	6	36
Seniors	4	3	8	0	0	2	5	22
Totals	29	14	31	2	0	4	17	97

RENT SUPPLEMENT	Victims of Violence (SPP)	Terminally III	Homeless *	Separated Family	Youth	Supportive Housing	Special Needs	Total
Households no Dependents	9	0	1	0	0	0	0	10
Households With Dependents	2	0	0	0	0	0	1	3
Seniors	0	0	0	0	0	0	0	0
Totals	11	0	1	0	0	0	1	13

PNP/CO-OP	Victims of Violence (SPP)	Terminally III	Homeless *	Separated Family	Youth	Supportive Housing	Special Needs	Total
Households no Dependents	3	0	1	0	0	1	1	6
Households With Dependents	5	0	1	0	1	0	2	9
Seniors	1	4	3	0	0	0	4	12
Totals	9	4	5	0	1	1	7	27

Grand Totals	49	18	37	2	1	5	25	137
---------------------	-----------	-----------	-----------	----------	----------	----------	-----------	------------