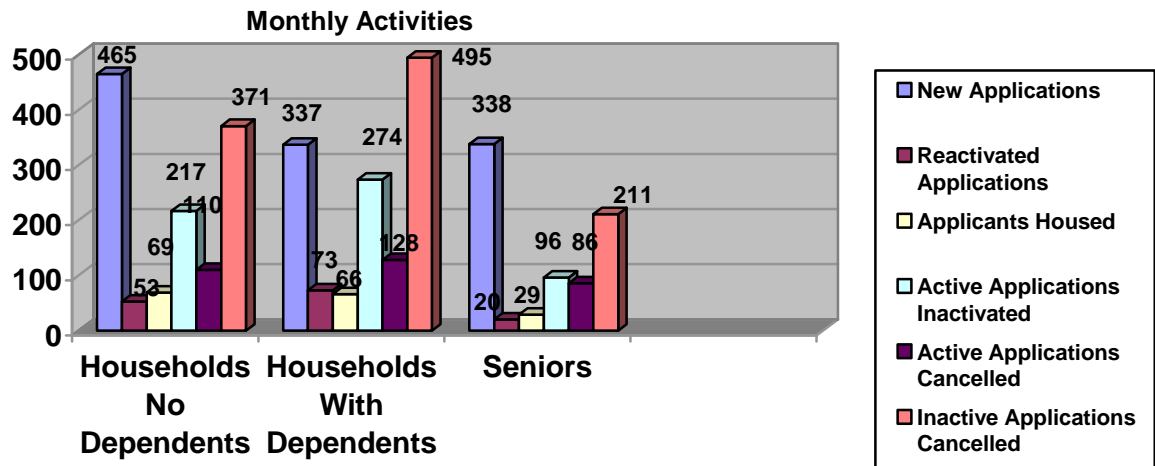




**MONTHLY REPORT**

**September 2004**

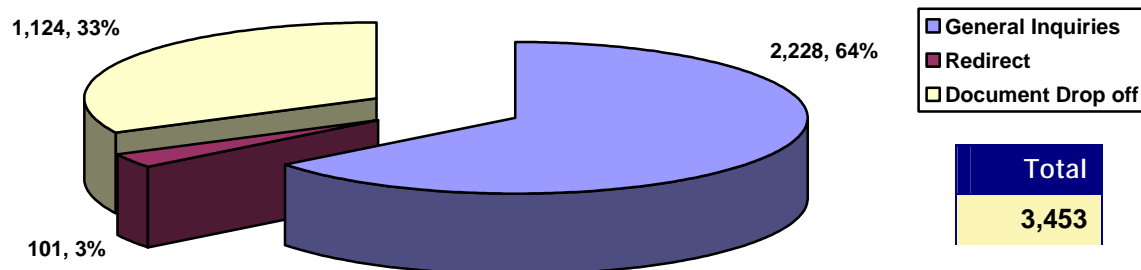
**SUMMARY OF ACTIVITIES**



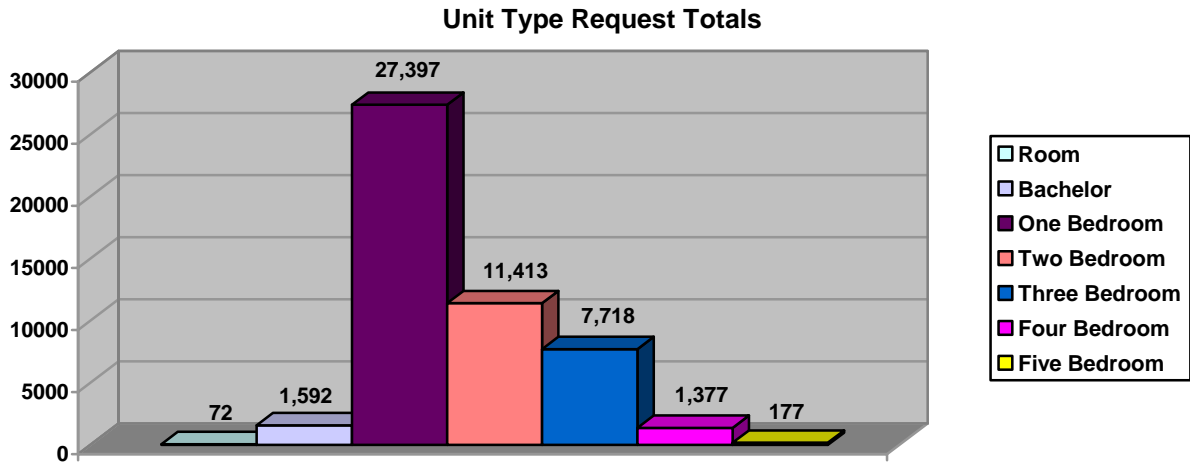
	Households no Dependents	Households With Dependents	Senior	Total
Waiting List As At Sept. 1 <sup>st</sup>	23,867	26,835	14,969	65,671
New Applications	465	337	338	1140
Reactivated Applications	53	73	20	146
Applicants Housed *	69	66	29	164
Active Applications Inactivated	217	274	96	587
Active Applications Cancelled	110	128	86	324
Inactive Applications Cancelled	371	495	211	1,077
Total Active Applications	17,786	19,645	12,315	49,746
Total Inactive Applications	5,996	6,838	2,666	15,500
Waiting List As At Sept. 30th	23,782	26,483	14,981	65,246

\* Includes Households housed directly by Providers.

**LOBBY ACTIVITIES**



**SIZE OF ACTIVE WAITING LIST**

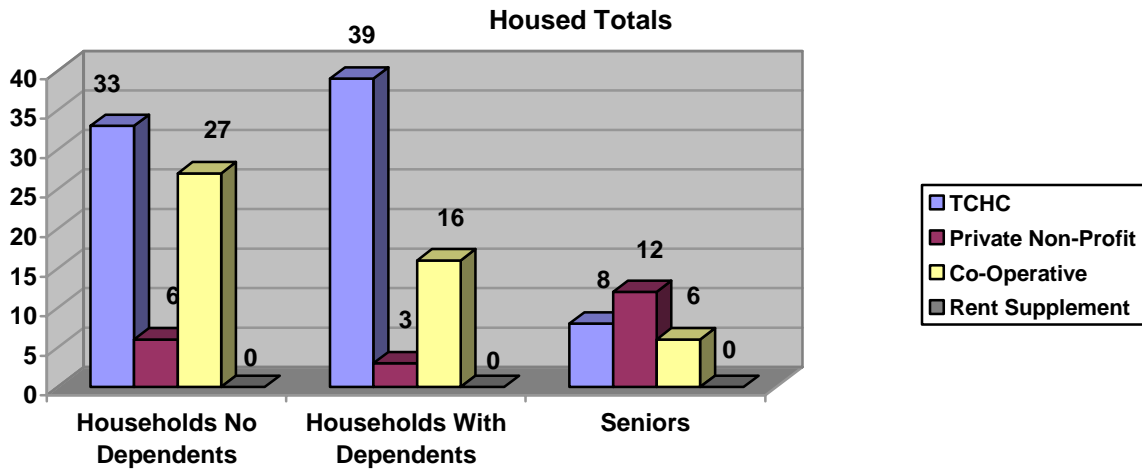


Unit Type	Households no Dependents	Households With Dependents	Senior	Total
Room	71	0	1	72
Bachelor	1,061	13	518	1,592
One Bedroom	14,794	1,170	11,433	27,397
Two Bedroom	1,454	9,629	331	11,413
Three Bedroom	343	7,343	32	7,718
Four Bedroom	53	1,324	0	1,377
Five Bedroom	10	167	0	177
<b>Totals</b>	<b>17,786</b>	<b>19,645</b>	<b>12,315</b>	<b>49,746</b>

Unit Type is from the largest types selected by the client.

	Households no Dependents	Households With Dependents	Senior	Total
<b>Households Requesting Wheelchair Access</b>	<b>204</b>	<b>167</b>	<b>162</b>	<b>533</b>

**HOUSED ACTIVITIES**



TCHC	Room	Bach	1B	2B	3B	4B	5B+	Total
Households no Dependents	7	5	11	8	2	0	0	33
Households With Dependents	0	2	2	21	12	1	1	39
Seniors	0	4	2	2	0	0	0	8
<b>Totals</b>	<b>7</b>	<b>11</b>	<b>15</b>	<b>31</b>	<b>14</b>	<b>1</b>	<b>1</b>	<b>80</b>

RENT SUPPLEMENT	Room	Bach	1B	2B	3B	4B	5B+	Total
Households no Dependents	0	0	0	0	0	0	0	0
Households With Dependents	0	0	0	0	0	0	0	0
Seniors	0	0	0	0	0	0	0	0
<b>Totals</b>	<b>0</b>	<b>0</b>	<b>0</b>	<b>0</b>	<b>0</b>	<b>0</b>	<b>0</b>	<b>0</b>

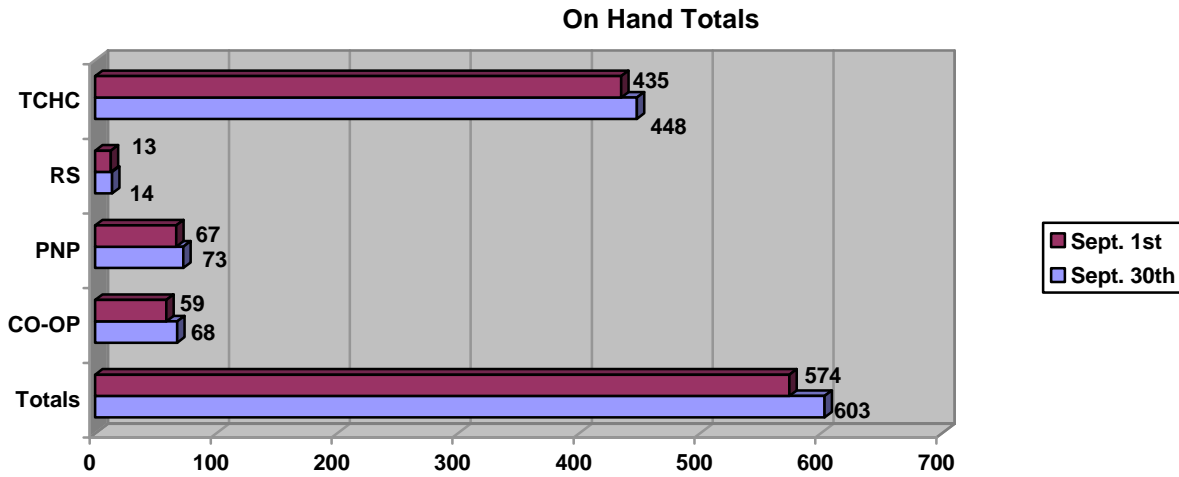
PNP	Room	Bach	1B	2B	3B	4B	5B+	Total
Households no Dependents	0	5	1	0	0	0	0	6
Households With Dependents	0	0	0	3	0	0	0	3
Seniors	0	1	10	1	0	0	0	12
<b>Totals</b>	<b>0</b>	<b>6</b>	<b>11</b>	<b>4</b>	<b>0</b>	<b>0</b>	<b>0</b>	<b>21</b>

CO-OP	Room	Bach	1B	2B	3B	4B	5B+	Total
Households no Dependents	0	13	12	2	0	0	0	27
Households With Dependents	0	0	2	9	4	1	0	16
Seniors	0	2	4	0	0	0	0	6
<b>Totals</b>	<b>0</b>	<b>15</b>	<b>18</b>	<b>11</b>	<b>4</b>	<b>1</b>	<b>0</b>	<b>49</b>

**HOUSED PNP and CO-OP PROVIDERS**

Providers	Room	Bach	1B	2B	3B	4B	5B+	Total
Akwa Honsta Non-Profit Aboriginal Homes Inc.		1						1
Barsa Kelly Cari-Can Co-Operative Homes Inc.			1	1				2
Blue Danube Housing Development Ont. Inc.				1				1
Broadview Housing Co-Operative Inc.			1					1
Chinese Evergreen Non-Profit Homes			1					1
Chord Housing Co-Operative Inc.			2					2
Church of Atonement Alderwood Seniors (Jubilee Centre)			1					1
City Park Co-Operative Apartments Inc.		15	8					23
Duncan Mills Labourers' Local 183 Co-Op				3				3
Edgeview Housing Co-Operative Inc.			1					1
Gardenview Co-Operative Homes				1				1
Harry Sherman Crowe Housing Co-Op Inc.			2	2				4
Lakeshore Village Artists Co-Op			2					2
Peregrine Co-Operative Homes Inc.				2				2
Rakozi Villa Non-Profit Housing Corp.		1						1
Rexdale Presbyterian Senior Citizens Corp (Higway Terrace)			1					1
Richview Baptist Foundation (Richview Residence)			1					1
Rouge Valley Co-Operative Homes Inc.				1				1
Secord Avenue Co-Operative Homes			1	1	1			3
Interfaith Homes Centenary Corp. – Shoniker Place			1					1
Stephenson Senior Link			1	1				2
Terra Bella Non-Profit Housing Corporation				1				1
Tobias House of Toronto		2						2
Villa Luso Non Profit Housing (Terra Nova Seniors)			3					3
Vincent Paul Family Homes (Gower Park)				1				1
Walton Place			1					1
Woburn Village Co-Op					3	1		4
Woodgreen Community Homes		2						2
YSM Genesis Place			1					1
<b>Totals</b>		<b>21</b>	<b>29</b>	<b>15</b>	<b>4</b>	<b>1</b>		<b>70</b>

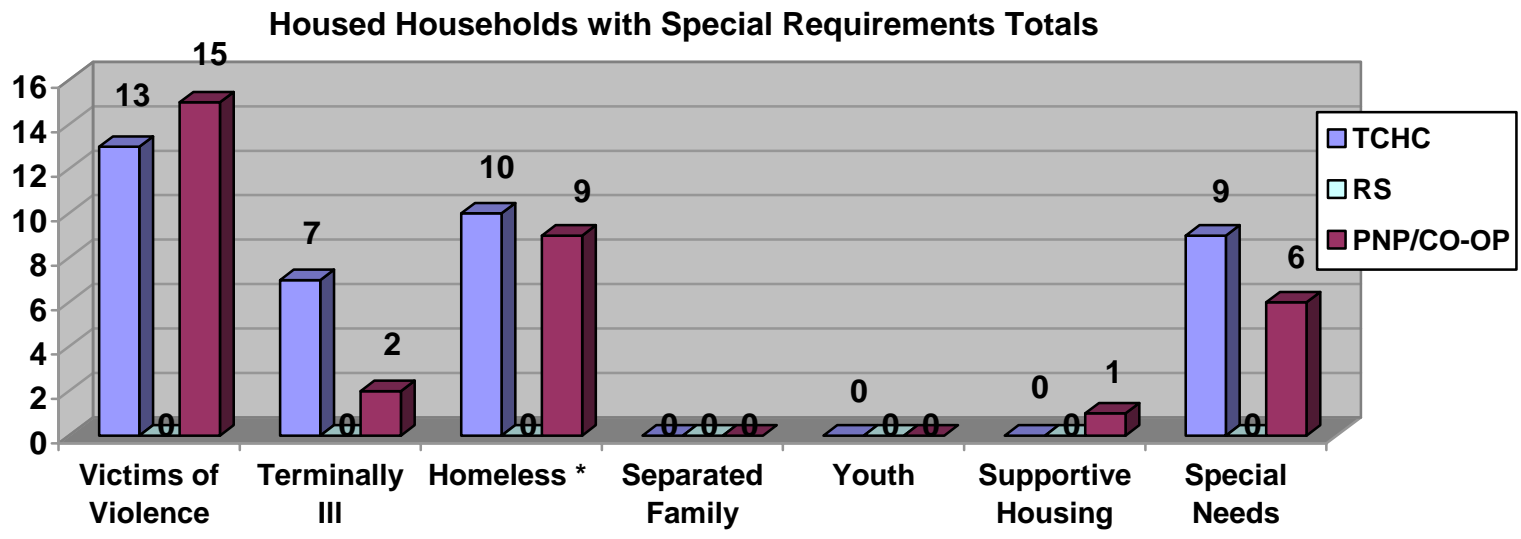
**SUMMARY OF VACANCY ACTIVITY**



Provider	On Hand as of Sept 1 <sup>st</sup> 2004	New	Cancelled	Offered	Accepted	On Hand as of Sept 30th 2004
TCHC	435	470	104	914	358	448
RS*	13	2	1	2	0	14
PNP	67	60	33	58	21	73
CO-OP	59	74	15	80	51	68
<b>Totals</b>	<b>574</b>	<b>606</b>	<b>153</b>	<b>1,054</b>	<b>430</b>	<b>603</b>

\* Rent Supplement statistics previously included in TCHC.

**HOUSED HOUSEHOLDS WITH SPECIAL HOUSING REQUIREMENTS**



\* This does not include Victims of Violence living in shelters

## Housing Connections

TCHC	Victims of Violence (SPP)	Terminally III	Homeless *	Separated Family	Youth	Supportive Housing	Special Needs	Total
Households no Dependents	5	5	8	0	0	0	6	24
Households With Dependents	7	1	2	0	0	0	3	13
Seniors	1	1	0	0	0	0	0	2
<b>Totals</b>	<b>13</b>	<b>7</b>	<b>10</b>	<b>0</b>	<b>0</b>	<b>0</b>	<b>9</b>	<b>39</b>

RENT SUPPLEMENT	Victims of Violence (SPP)	Terminally III	Homeless *	Separated Family	Youth	Supportive Housing	Special Needs	Total
Households no Dependents	0	0	0	0	0	0	0	0
Households With Dependents	0	0	0	0	0	0	0	0
Seniors	0	0	0	0	0	0	0	0
<b>Totals</b>	<b>0</b>	<b>0</b>	<b>0</b>	<b>0</b>	<b>0</b>	<b>0</b>	<b>0</b>	<b>0</b>

PNP/CO-OP	Victims of Violence (SPP)	Terminally III	Homeless *	Separated Family	Youth	Supportive Housing	Special Needs	Total
Households no Dependents	3	1	3	0	0	0	2	9
Households With Dependents	11	0	5	0	0	0	1	17
Seniors	1	1	1	0	0	1	3	7
<b>Totals</b>	<b>15</b>	<b>2</b>	<b>9</b>	<b>0</b>	<b>0</b>	<b>1</b>	<b>6</b>	<b>33</b>

<b>Grand Totals</b>	<b>28</b>	<b>9</b>	<b>19</b>	<b>0</b>	<b>0</b>	<b>1</b>	<b>15</b>	<b>72</b>
---------------------	-----------	----------	-----------	----------	----------	----------	-----------	-----------