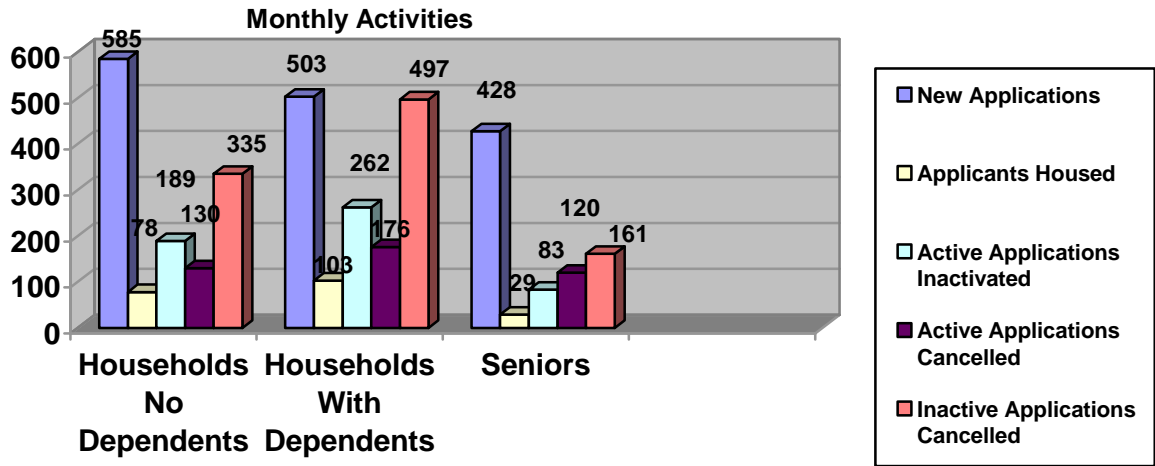




MONTHLY REPORT

October 2004

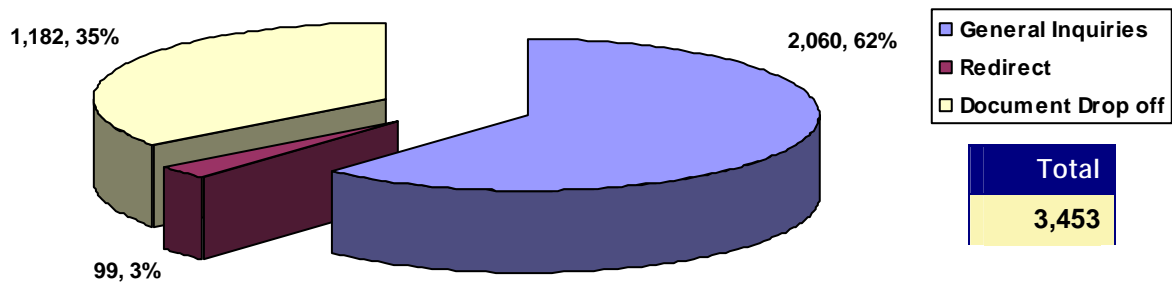
SUMMARY OF ACTIVITIES



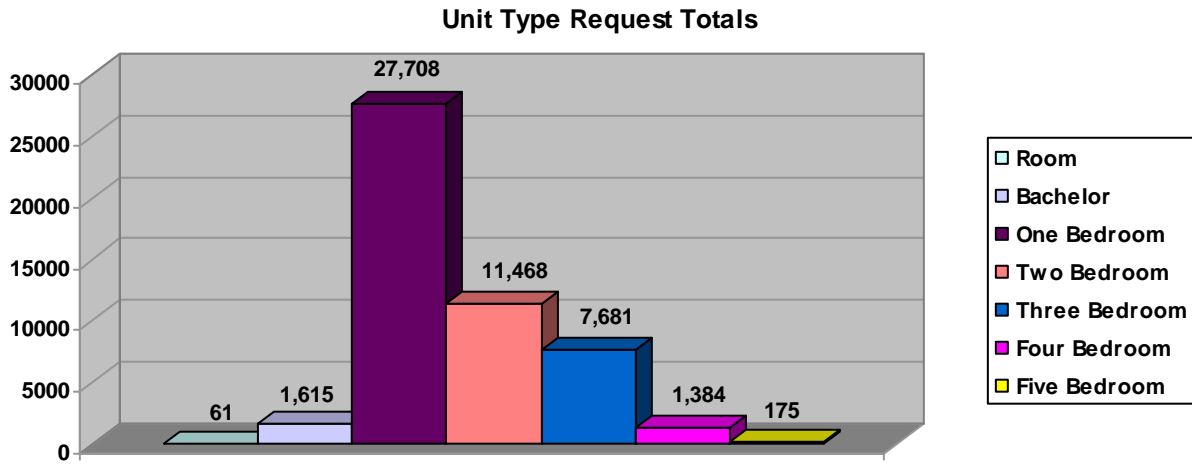
	Households no Dependents	Households With Dependents	Senior	Total
Waiting List As At Oct. 1 st	23,782	26,483	14,981	65,246
New Applications	585	503	428	1516
Applicants Housed *	78	103	29	210
Active Applications Inactivated	189	262	83	534
Active Applications Cancelled	130	176	120	426
Inactive Applications Cancelled	335	497	161	993
Total Active Applications	17,974	19,607	12,511	50,092
Total Inactive Applications	5,842	6,638	2,611	15,091
Waiting List As At Oct. 30 th	23,816	26,245	15,122	65,183

* Includes Households housed directly by Providers.

LOBBY ACTIVITIES



SIZE OF ACTIVE WAITING LIST

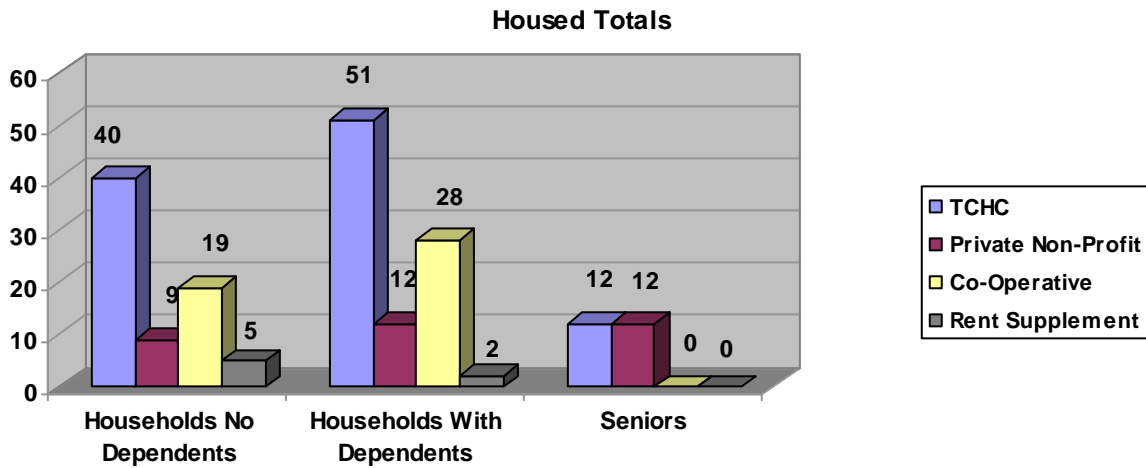


Unit Type	Households no Dependents	Households With Dependents	Senior	Total
Room	60	0	1	61
Bachelor	1,057	14	544	1615
One Bedroom	14,919	1,195	11,594	27,708
Two Bedroom	1,507	9,626	335	11,468
Three Bedroom	362	7,282	37	7,681
Four Bedroom	59	1,315	0	1,384
Five Bedroom	10	165	0	175
Totals	17,974	19,607	12,511	50,092

Unit Type is from the largest types selected by the client.

	Households no Dependents	Households With Dependents	Senior	Total
Households Requesting Wheelchair Access	213	167	177	557

HOUSED ACTIVITIES



TCHC	Room	Bach	1B	2B	3B	4B	5B+	Total
Households no Dependents	15	8	10	6	0	0	1	40
Households With Dependents	0	1	0	26	21	2	1	51
Seniors	0	10	2	0	0	0	0	12
Totals	15	19	12	32	21	2	2	103

RENT SUPPLEMENT	Room	Bach	1B	2B	3B	4B	5B+	Total
Households no Dependents	0	1	3	1	0	0	0	5
Households With Dependents	0	0	1	1	0	0	0	2
Seniors	0	0	0	0	0	0	0	0
Totals	0	1	4	2	0	0	0	7

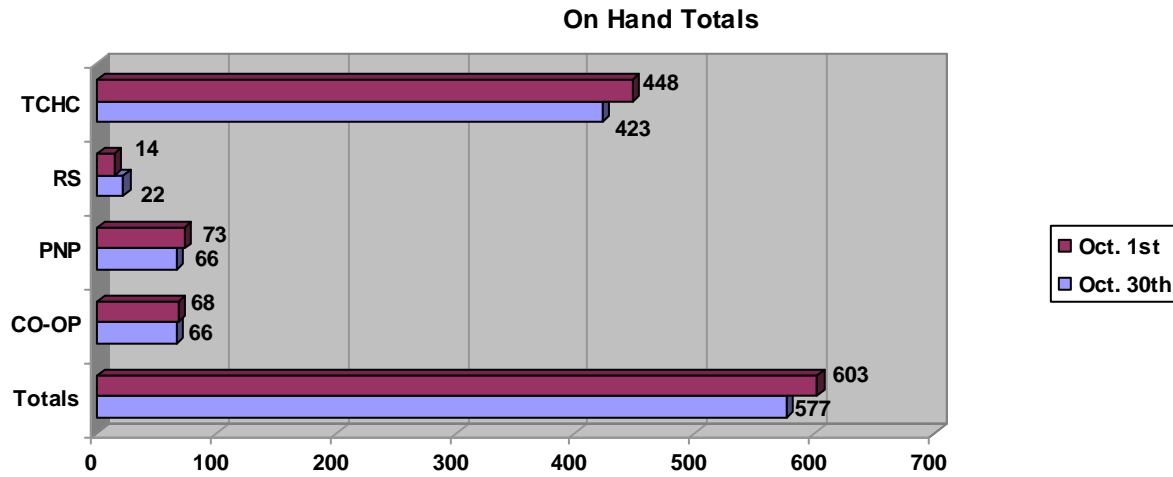
PNP	Room	Bach	1B	2B	3B	4B	5B+	Total
Households no Dependents	0	2	3	4	0	0	0	9
Households With Dependents	0	1	1	6	4	0	0	12
Seniors	0	1	9	2	0	0	0	12
Totals	0	4	13	12	4	0	0	33

CO-OP	Room	Bach	1B	2B	3B	4B	5B+	Total
Households no Dependents	0	7	10	2	0	0	0	19
Households With Dependents	0	0	1	15	9	3	0	28
Seniors	0	0	0	0	0	0	0	0
Totals	0	15	11	17	9	3	0	47

HOUSED PNP and CO-OP PROVIDERS

Providers	Room	Bach	1B	2B	3B	4B	5B+	Total
ACLI Co-operative Homes				1				1
Akwa Honsta Non-Profit Aboriginal Homes Inc.		1						1
Ascot Co-op Homes			1	1				2
Atkinson Housing Co-op					2	2		4
Bellamy Housing Co-op				1				1
Blue Danube Housing Development Ont. Inc.				1				1
Broadview Housing Co-Operative Inc.			1					1
Chinese Evergreen Non-Profit Homes			1		1			2
Chord Housing Co-Operative Inc.			1					1
City Park Co-Operative Apartments Inc.		7	1					8
Duncan Mills Labourers' Local 183 Co-op				2				2
Ernescliffe Non-Profit Housing Co-operative Inc.			1					1
Gardenview Co-Operative Homes					1			1
Harry Sherman Crowe Housing Co-Op Inc.			1	1				2
Hellenic Home for the Aged Inc			4					4
Hickory Tree Road Co-operative Homes Inc.				1				1
Houses Opening Today Toronto Inc.				1				1
Jack Goodlad Senior Citizens Residence Corp			1					1
Kehilla Residential Program			1	1				2
Lakeshore Gardens Co-operative			3	2				5
Lakeshore Village Artists Co-Op				1				1
Las Flores Non-Profit			1					1
Maurice Coulter Housing Co-operative				2				2
New Spadina Garment Industry Corp.				3				3
Peregrine Co-Operative Homes Inc.				4	1			5
Rakozi Villa Non-Profit Housing Corp.			1					1
Scarborough Heights Co-operative Homes Inc.			1	2				3
St. Matthew's Bracondale House		2						2
Stephenson Senior Link				2				2
Tamil Co-operative Homes				1				1
Terra Bella Non-Profit Housing Corporation				1				1
Villa Otthon Non-Profit Corporation				1	1			2
Vincent Paul Family Homes (Gower Park)			2					2
Woburn Village Co-Op					4	1		5
Woodgreen Community Homes		1	2					3
Zerin Development Corporation				1				1
Totals	0	11	24	29	13	3	0	80

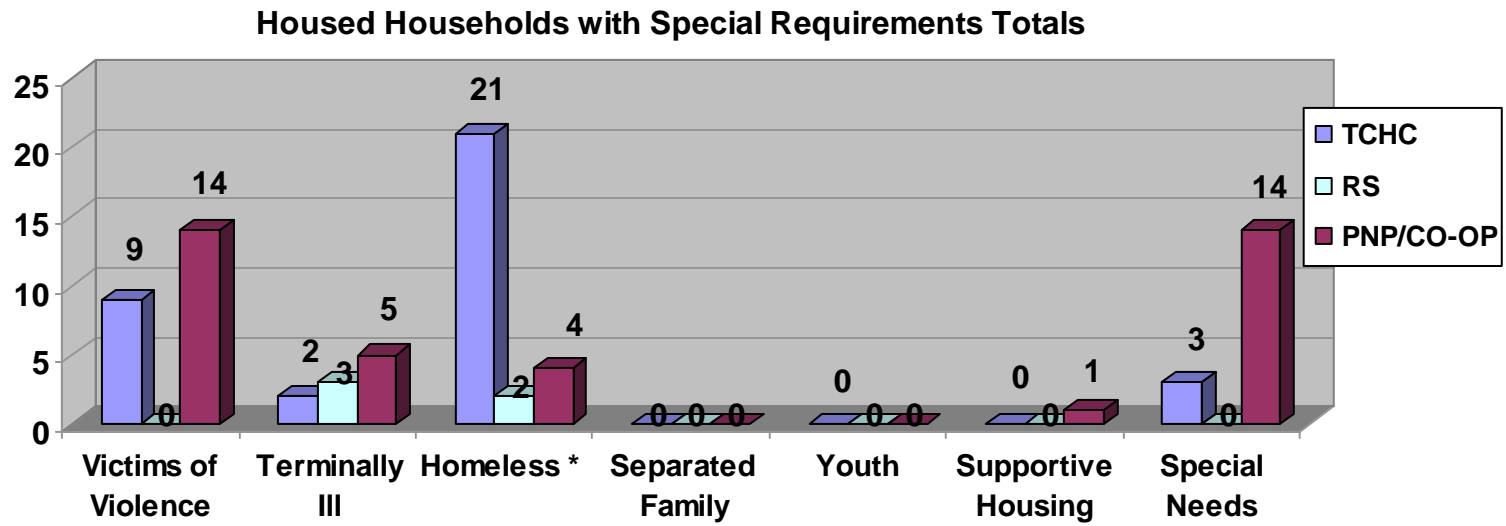
SUMMARY OF VACANCY ACTIVITY



Provider	On Hand as of Oct 1 st 2004	New	Cancelled	Offered	Accepted	On Hand as of Oct 30 th 2004
TCHC	448	426	64	1,019	413	423
RS*	14	16	1	19	7	22
PNP	73	55	26	73	33	66
CO-OP	68	71	22	92	47	66
Totals	603	568	113	1,203	500	577

* Rent Supplement statistics previously included in TCHC.

HOUSED HOUSEHOLDS WITH SPECIAL HOUSING REQUIREMENTS



* This does not include Victims of Violence living in shelters

Housing Connections

TCHC	Victims of Violence (SPP)	Terminally III	Homeless *	Separated Family	Youth	Supportive Housing	Special Needs	Total
Households no Dependents	4	0	9	0	0	0	2	15
Households With Dependents	5	2	10	0	0	0	1	18
Seniors	0	0	2	0	0	0	0	2
Totals	9	2	21	0	0	0	3	35

RENT SUPPLEMENT	Victims of Violence (SPP)	Terminally III	Homeless *	Separated Family	Youth	Supportive Housing	Special Needs	Total
Households no Dependents	0	3	0	0	0	0	0	3
Households With Dependents	0	0	2	0	0	0	0	2
Seniors	0	0	0	0	0	0	0	0
Totals	0	3	2	0	0	0	0	5

PNP/CO-OP	Victims of Violence (SPP)	Terminally III	Homeless *	Separated Family	Youth	Supportive Housing	Special Needs	Total
Households no Dependents	5	2	2	0	0	1	4	14
Households With Dependents	9	3	1	0	0	0	8	21
Seniors	0	0	1	0	0	1	2	3
Totals	14	5	4	0	0	1	14	38

Grand Totals	23	10	27	0	0	1	17	78
---------------------	-----------	-----------	-----------	----------	----------	----------	-----------	-----------