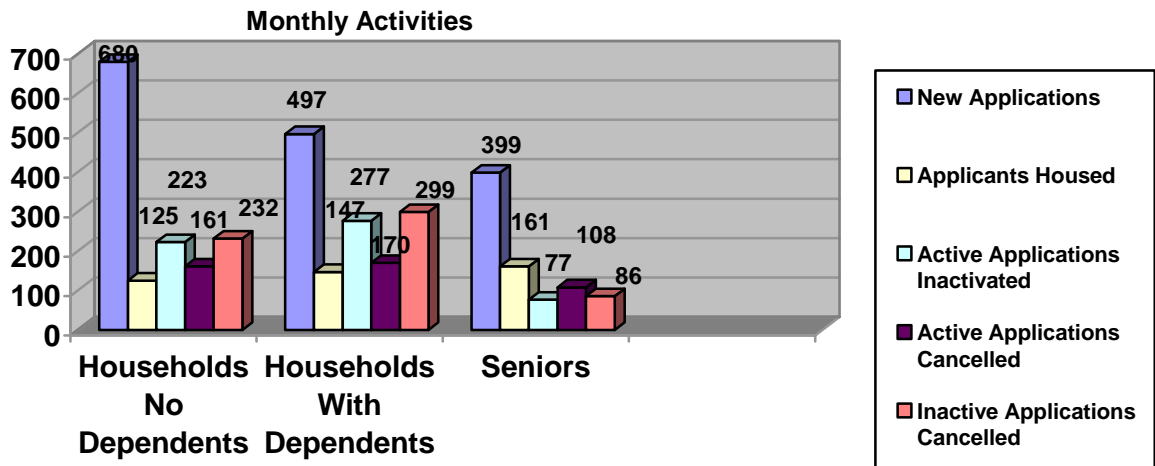




MONTHLY REPORT

November 2004

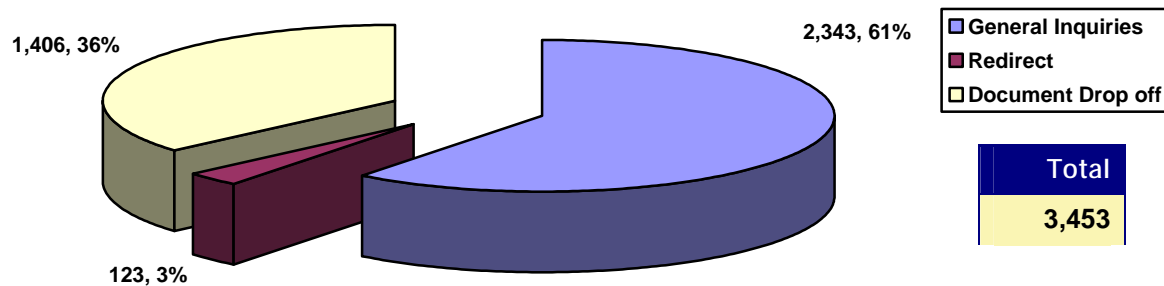
SUMMARY OF ACTIVITIES



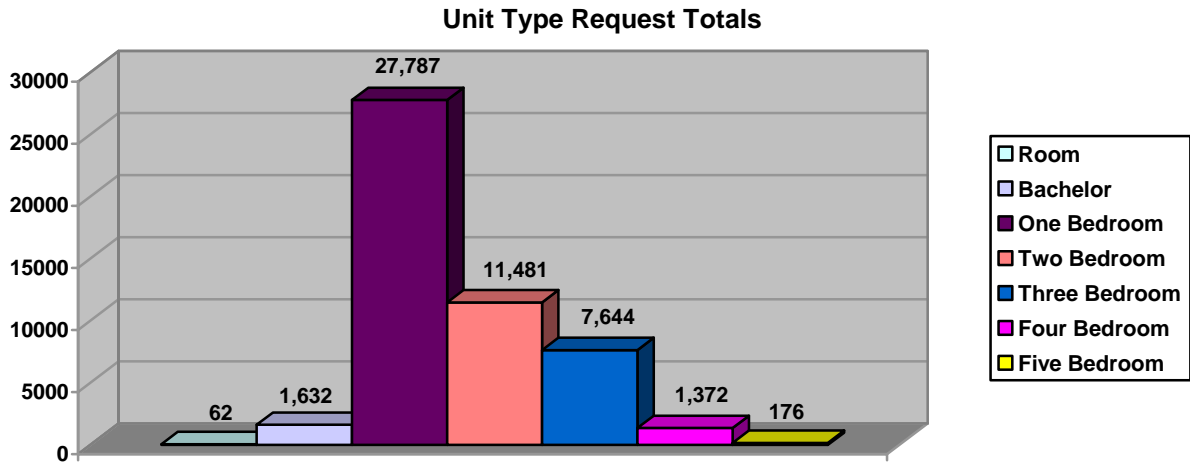
	Households no Dependents	Households With Dependents	Senior	Total
Waiting List As At Nov. 1 st	23,816	26,245	15,122	65,183
New Applications	680	497	399	1,576
Applicants Housed *	125	147	161	433
Active Applications Inactivated	223	277	77	577
Active Applications Cancelled	161	170	108	439
Inactive Applications Cancelled	232	299	86	617
Total Active Applications	18,145	19,510	12,564	50,219
Total Inactive Applications	5,782	6,564	2,578	14,924
Waiting List As At Nov. 30th	23,927	26,074	15,142	65,143

* Includes Households housed directly by Providers.

LOBBY ACTIVITIES



SIZE OF ACTIVE WAITING LIST



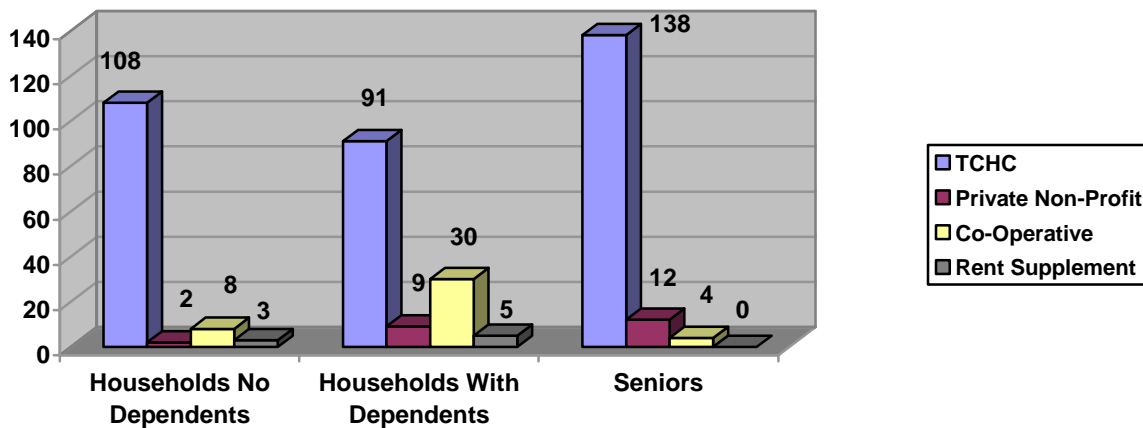
Unit Type	Households no Dependents	Households With Dependents	Senior	Total
Room	59	2	1	62
Bachelor	1,058	15	559	1,632
One Bedroom	15,009	1,181	11,597	27,787
Two Bedroom	1,543	9,593	345	11,481
Three Bedroom	385	7,222	37	7,644
Four Bedroom	61	1,311	0	1,372
Five Bedroom	11	165	0	176
Totals	18,126	19,489	12,539	50,154

Unit Type is from the largest types selected by the client.

	Households no Dependents	Households With Dependents	Senior	Total
Households Requesting Wheelchair Access	223	178	189	590

HOUSED ACTIVITIES

Housed Totals



TCHC	Room	Bach	1B	2B	3B	4B	5B+	Total
Households no Dependents	4	57	32	10	5	0	0	108
Households With Dependents	0	1	3	45	35	6	1	91
Seniors	0	94	43	0	0	0	1	138
Totals	4	152	78	55	40	6	2	337

RENT SUPPLEMENT	Room	Bach	1B	2B	3B	4B	5B+	Total
Households no Dependents	0	0	3	0	0	0	0	3
Households With Dependents	0	0	1	1	3	0	0	5
Seniors	0	0	0	0	0	0	0	0
Totals	0	0	4	1	3	0	0	8

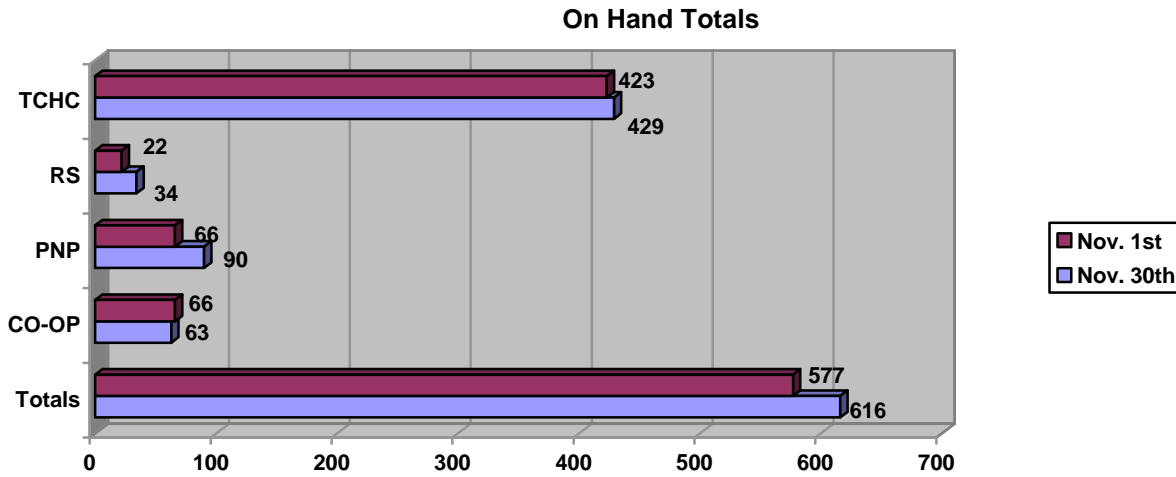
PNP	Room	Bach	1B	2B	3B	4B	5B+	Total
Households no Dependents	0	0	2	0	0	0	0	2
Households With Dependents	0	1	0	3	5	0	0	9
Seniors	0	3	8	1	0	0	0	12
Totals	0	4	10	4	5	0	0	23

CO-OP	Room	Bach	1B	2B	3B	4B	5B+	Total
Households no Dependents	0	2	2	3	1	0	0	8
Households With Dependents	0	0	0	17	11	2	0	30
Seniors	0	1	2	1	0	0	0	4
Totals	0	3	4	21	12	2	0	42

HOUSED PNP and CO-OP PROVIDERS

Providers	Room	Bach	1B	2B	3B	4B	5B+	Total
Almise Co-operative Homes Inc			1					1
Atkinson Housing Co-op				3	1			4
Central King Seniors Residence			1					1
City Park Co-Operative Apartments Inc.		3						3
Clintwood Non-Profit Housing Co-operative				1				1
Duncan Mills Labourers' Local 183 Co-op				2				2
Ernescliffe Non-Profit Housing Co-operative Inc.			1	1				2
Glen Gardens Housing Co-operative Inc.				1				1
Harbour Channel Housing Co-operative Inc.				1				1
Harry Sherman Crowe Housing Co-Op Inc.				2	3			5
Houses Opening Today Toronto Inc.				1				1
Jack Goodlad Senior Citizens Residence Corp			1					1
Kehilla Residential Program				1	1			2
Lakeshore Village Artists Co-Op			2					2
Peregrine Co-Operative Homes Inc.				1	1			2
Rexdale Presbyterian Senior Citizens Corporation			3					3
Richview Baptist Foundation			1					1
Salvador Del Mundo/Upwood Park				10				10
Scarborough Heights Co-operative Homes Inc.				1				1
St. David's Village		1						1
St. Demetrius Ukrainian Development Corporation			1					1
St. Matthew's Bracondale House					2			2
Stephenson Senior Link		2						2
Thornccliffe Park Co-operative Homes				1				1
Villa Otthon Non-Profit Corporation				1	2			3
Walton Place				1				1
Woburn Village Co-Op					6	1		7
Woodgreen Community Homes		2	2					4
Totals	0	8	13	28	16	1	0	66

SUMMARY OF VACANCY ACTIVITY

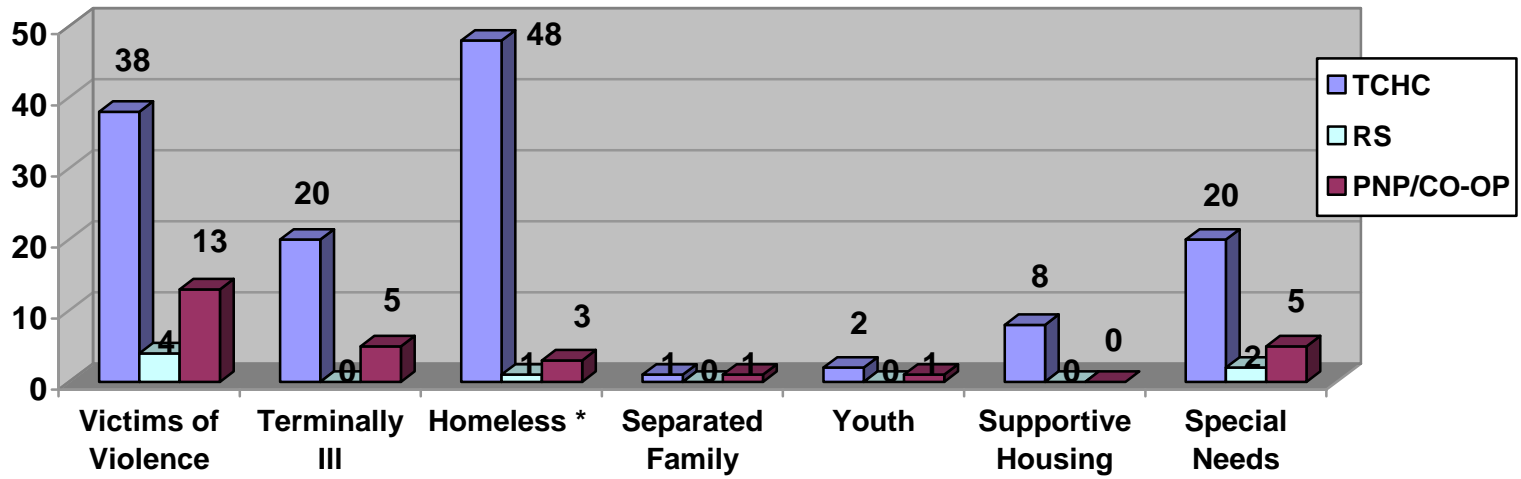


Provider	On Hand as of Nov 1 st 2004	New	Cancelled	Offered	Accepted	On Hand as of Nov 30 th 2004
TCHC	423	426	66	858	365	429
RS*	22	26	6	42	8	34
PNP	66	64	17	68	23	90
CO-OP	66	50	12	90	42	63
Totals	577	566	101	1,058	438	616

* Rent Supplement statistics previously included in TCHC.

HOUSED HOUSEHOLDS WITH SPECIAL HOUSING REQUIREMENTS

Housed Households with Special Requirements Totals



* This does not include Victims of Violence living in shelters

Housing Connections

TCHC	Victims of Violence (SPP)	Terminally III	Homeless *	Separated Family	Youth	Supportive Housing	Special Needs	Total
Households no Dependents	14	12	25	0	1	1	7	60
Households With Dependents	19	3	9	1	1	0	3	36
Seniors	5	5	14	0	0	7	10	41
Totals	38	20	48	1	2	8	20	137

RENT SUPPLEMENT	Victims of Violence (SPP)	Terminally III	Homeless *	Separated Family	Youth	Supportive Housing	Special Needs	Total
Households no Dependents	2	0	0	0	0	0	0	2
Households With Dependents	2	0	1	0	0	0	2	5
Seniors	0	0	0	0	0	0	0	0
Totals	4	0	1	0	0	0	2	7

PNP/CO-OP	Victims of Violence (SPP)	Terminally III	Homeless *	Separated Family	Youth	Supportive Housing	Special Needs	Total
Households no Dependents	0	3	2	0	0	0	3	9
Households With Dependents	11	1	1	0	1	0	2	16
Seniors	2	1	0	0	0	0	0	3
Totals	13	5	3	0	1	0	5	28

Grand Totals	55	25	52	2	3	8	27	172
---------------------	-----------	-----------	-----------	----------	----------	----------	-----------	------------