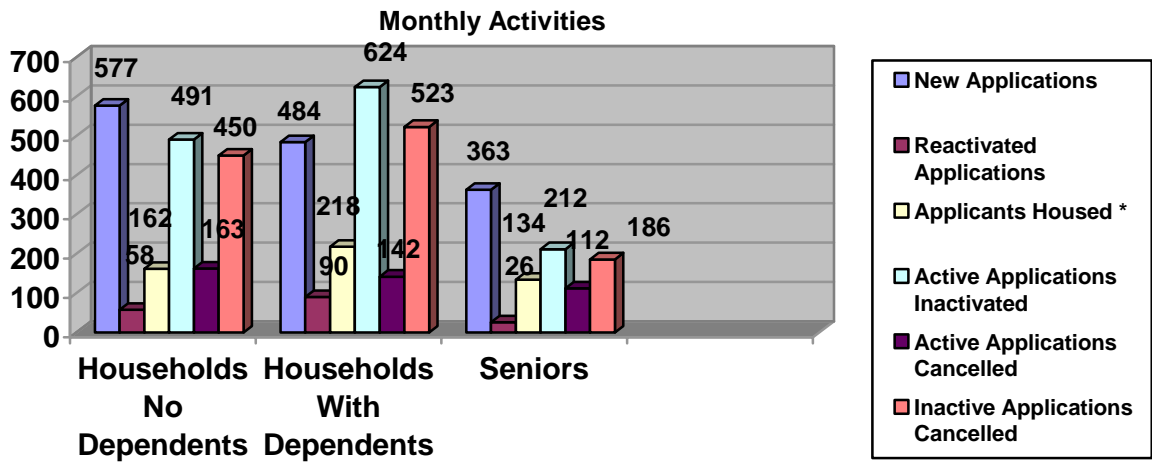




MONTHLY REPORT

May 2004

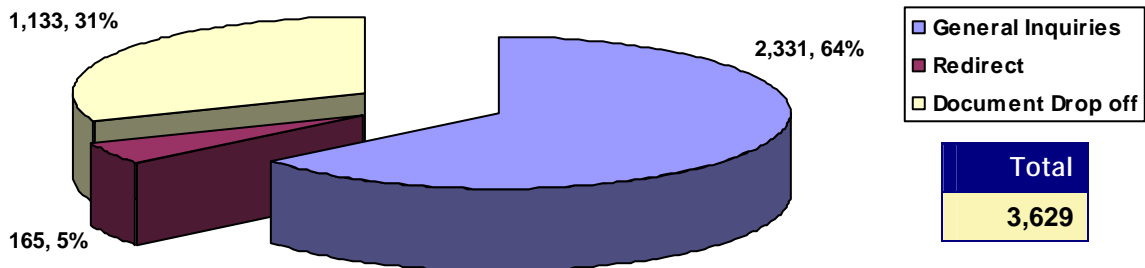
SUMMARY OF ACTIVITIES



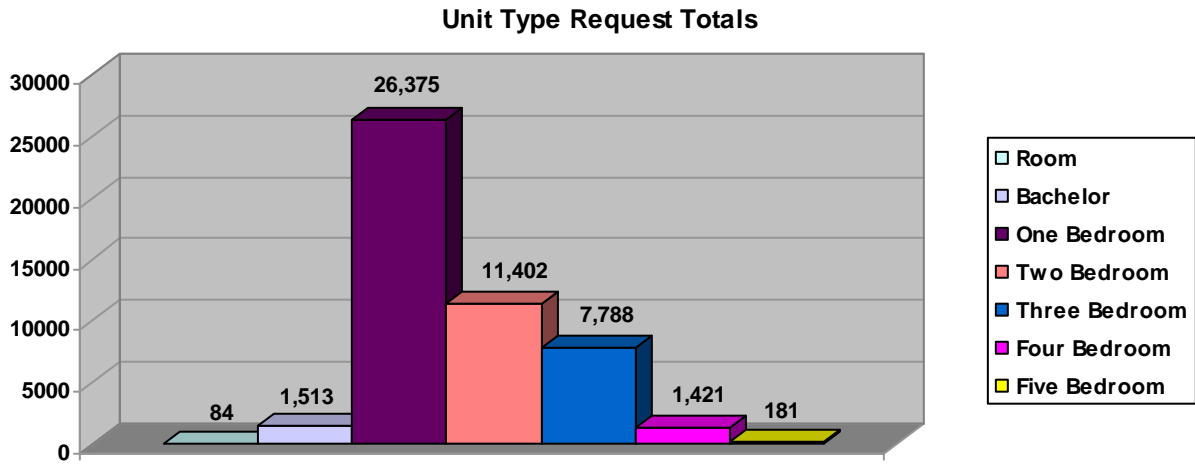
| | Households no Dependents | Households With Dependents | Senior | Total |
|---|--------------------------|----------------------------|---------------|---------------|
| Waiting List As At May 1 st | 23,785 | 27,968 | 14,954 | 66,707 |
| New Applications | 577 | 484 | 363 | 1,424 |
| Reactivated Applications | 58 | 90 | 26 | 174 |
| Applicants Housed * | 162 | 218 | 134 | 514 |
| Active Applications Inactivated | 491 | 624 | 212 | 1,327 |
| Active Applications Cancelled | 163 | 142 | 112 | 417 |
| Inactive Applications Cancelled | 450 | 523 | 186 | 1,159 |
| Total Active Applications | 17,006 | 19,892 | 11,866 | 48,764 |
| Total Inactive Applications | 6,581 | 7,677 | 3,109 | 17,277 |
| Waiting List As At April 30 th | 23,587 | 27,569 | 14,885 | 66,041 |

* Includes Households housed directly by Providers.

LOBBY ACTIVITIES



SIZE OF ACTIVE WAITING LIST

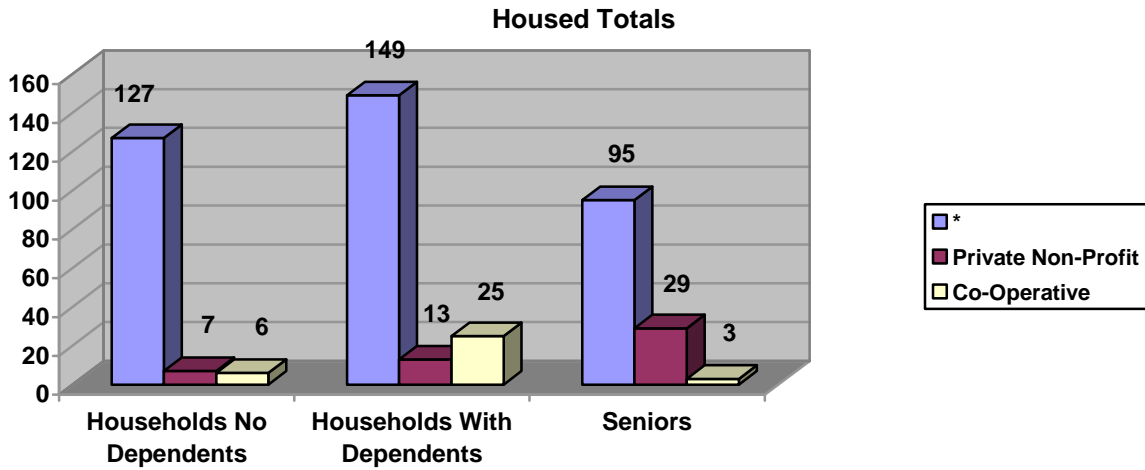


| Unit Type | Households no Dependents | Households With Dependents | Senior | Total |
|---------------|--------------------------|----------------------------|---------------|---------------|
| Room | 82 | 0 | 2 | 84 |
| Bachelor | 1,034 | 14 | 465 | 1,513 |
| One Bedroom | 14,266 | 1,079 | 11,030 | 26,375 |
| Two Bedroom | 1,309 | 9,746 | 347 | 11,402 |
| Three Bedroom | 273 | 7,493 | 22 | 7,788 |
| Four Bedroom | 36 | 1,385 | 0 | 1,421 |
| Five Bedroom | 6 | 175 | 0 | 181 |
| Totals | 17,006 | 19,892 | 11,866 | 48,764 |

Unit Type is from the largest types selected by the client.

| | Households no Dependents | Households With Dependents | Senior | Total |
|--|--------------------------|----------------------------|------------|------------|
| Households Requesting Wheelchair Access | 162 | 160 | 135 | 457 |

HOUSED ACTIVITIES



| TCHC | Room | Bach | 1B | 2B | 3B | 4B | 5B+ | Total |
|----------------------------|-----------|------------|-----------|------------|-----------|-----------|----------|------------|
| Households no Dependents | 12 | 49 | 43 | 23 | 0 | 0 | 0 | 127 |
| Households With Dependents | 0 | 5 | 5 | 78 | 46 | 12 | 3 | 149 |
| Seniors | 0 | 63 | 30 | 2 | 0 | 0 | 0 | 95 |
| Totals | 12 | 117 | 78 | 103 | 46 | 12 | 3 | 371 |

| PNP | Room | Bach | 1B | 2B | 3B | 4B | 5B+ | Total |
|----------------------------|----------|----------|-----------|-----------|----------|----------|----------|-----------|
| Households no Dependents | 0 | 1 | 3 | 3 | 0 | 0 | 0 | 7 |
| Households With Dependents | 0 | 0 | 1 | 11 | 1 | 0 | 0 | 13 |
| Seniors | 0 | 6 | 22 | 1 | 0 | 0 | 0 | 29 |
| Totals | 0 | 7 | 26 | 15 | 1 | 0 | 0 | 49 |

| CO-OP | Room | Bach | 1B | 2B | 3B | 4B | 5B+ | Total |
|----------------------------|----------|----------|----------|-----------|----------|----------|----------|-----------|
| Households no Dependents | 0 | 1 | 3 | 2 | 0 | 0 | 0 | 6 |
| Households With Dependents | 0 | 0 | 0 | 19 | 4 | 2 | 0 | 25 |
| Seniors | 0 | 0 | 2 | 1 | 0 | 0 | 0 | 3 |
| Totals | 0 | 1 | 5 | 22 | 4 | 2 | 0 | 34 |

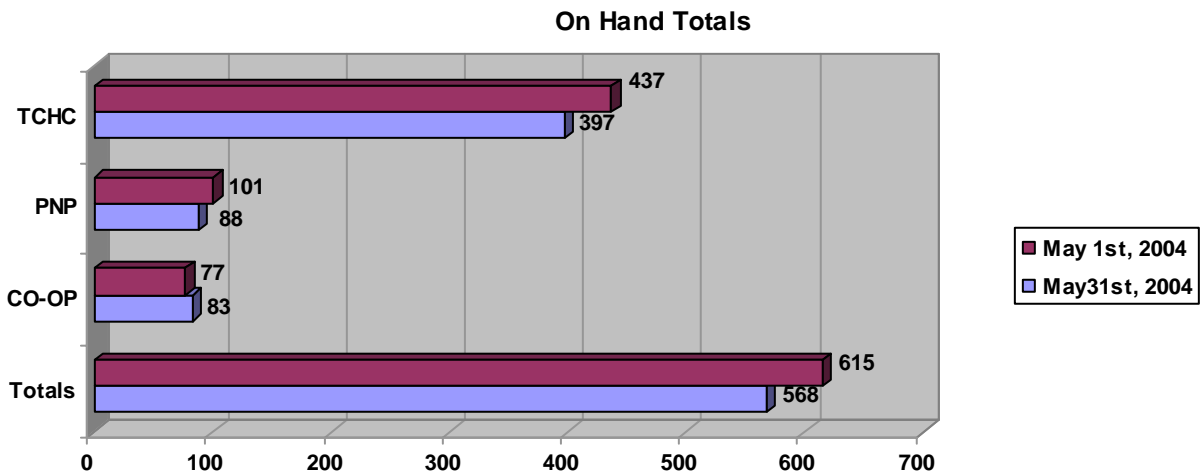
HOUSED PNP and CO-OP PROVIDERS

| Providers | Room | Bach | 1B | 2B | 3B | 4B | 5B+ | Total |
|---|------|------|----|----|----|----|-----|-------|
| Akwa Honsta Non-Profit Aboriginal Homes Inc. | | 1 | | | | | | 1 |
| Aldebrain Attendant Care Services | | | | 4 | | | | 4 |
| Almise Co-Operative Homes Inc. | | | 1 | 1 | | | | 2 |
| Northminster Residences of Toronto (Amesbury Residences) | | | 1 | 2 | | | | 3 |
| Atkinson Housing Co-Op | | | | | 2 | 2 | | 4 |
| Bellamy Housing Co-Operative Inc. | | | | 1 | | | | 1 |
| B'Nai Brith Canada | | | 1 | | | | | 1 |
| Church of Atonement – Jubilee Centre | | | 2 | | | | | 2 |
| Ernescliffe Non-Profit Housing | | 1 | | | | | | 1 |
| Hellenic Home for the Aged Inc. | | | 4 | 1 | | | | 5 |
| Hospital Workers' Housing Co-Op | | | | 1 | | | | 1 |
| Houses Opening Today Toronto Inc. | | | 1 | 1 | | | | 2 |
| Italian Canadian Benevolent Seniors (Caboto Terrace) | | | 1 | | | | | 1 |
| Jack Goodlad Senior Citizens | | | 2 | | | | | 2 |
| Jarvis George Housing Co-Operative Inc. | | | | 1 | | | | 1 |
| Kehilla Residential - Plaut Manor | | | 1 | | | | | 1 |
| Lakeshore Gardens Co-Operative Homes Inc. | | | | 4 | | | | 4 |
| Lakeshore Village Artists Co-Op | | | 3 | 1 | | | | 4 |
| Les Centres D'Accueil Heritage | | | 1 | | | | | 1 |
| Loyola Arrupe Corporation | | | 1 | | | | | 1 |
| Nakisa Co-Operative Homes Inc. | | | | | 2 | | | 2 |
| New Spadina Garment Industry Corp | | | | 3 | | | | 3 |
| Older Women's Network Housing Co-Operative | | | 1 | | | | | 1 |
| Peregrine Co-Operative Homes | | | | 4 | | | | 4 |
| Performing Arts Lodges of Canada | | | 1 | | | | | 1 |
| Rakozi Villa Non-Profit Housing | | | 1 | | | | | 1 |
| Richview Baptist Foundation | | | 1 | | | | | 1 |
| Robert Cooke Co-Operative Homes | | | | 3 | | | | 3 |
| Scarborough Heights Co-Op | | | | 2 | | | | 2 |
| Secord Avenue Co-Operative Homes | | | | 3 | | | | 3 |
| Stephenson Sr. Link Homes | | | 1 | | | | | 1 |
| St. David's Village Corporation | | 4 | | | | | | 4 |
| St. Matthew's Bracondale House | | | | | 1 | | | 1 |
| Sts. Peter and Paul Ukrainian Community Homes | | | 1 | | | | | 1 |
| The Brotherhood Foundation | | 2 | 1 | | | | | 3 |
| The St. Margaret's Towers Inc. | | | | 1 | | | | 1 |
| Ujamaa Housing Co-Op | | | | 1 | | | | 1 |
| Union of Operating Engineers Local 793 Non-Profit Housing | | | | 3 | | | | 3 |

Housing Connections

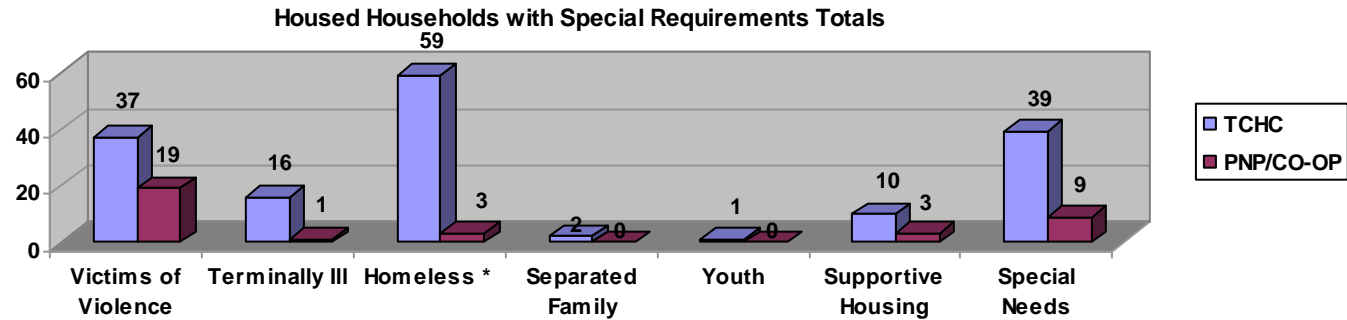
| Providers | Room | Bach | 1B | 2B | 3B | 4B | 5B+ | Total |
|---|------|----------|-----------|-----------|----------|----------|----------|-----------|
| | | | | | | | | |
| Wilmar Heights United Church Non-Profit Homes | | | 1 | | | | | 1 |
| Woodgreen Community Housing Inc. | | | 4 | | | | | 4 |
| Totals | | 8 | 31 | 37 | 5 | 2 | 0 | 83 |

SUMMARY OF VACANCY ACTIVITY (May 31st, 2004)



| Provider | On Hand as of May 1 st 2004 | New | Cancelled | Offered | Accepted | On Hand as of May 31st 2004 |
|----------|--|-----|-----------|---------|----------|-----------------------------|
| TCHC | 437 | 428 | 75 | 887 | 390 | 397 |
| PNP | 101 | 52 | 6 | 62 | 49 | 88 |
| CO-OP | 77 | 41 | 0 | 52 | 34 | 83 |
| Totals | 615 | 521 | 81 | 1,004 | 473 | 568 |

HOUSED HOUSEHOLDS WITH SPECIAL HOUSING REQUIREMENTS



| TCHC | Victims of Violence (SPP) | Terminally Ill | Homeless * | Separated Family | Youth | Supportive Housing | Special Needs | Total |
|----------------------------|---------------------------|----------------|------------|------------------|----------|--------------------|---------------|------------|
| Households no Dependents | 14 | 6 | 29 | 2 | 1 | 4 | 18 | 74 |
| Households With Dependents | 22 | 7 | 22 | 0 | 0 | 1 | 9 | 61 |
| Seniors | 1 | 3 | 8 | 0 | 0 | 5 | 12 | 29 |
| Totals | 37 | 16 | 59 | 2 | 1 | 10 | 39 | 164 |

| PNP/CO-OP | Victims of Violence (SPP) | Terminally Ill | Homeless * | Separated Family | Youth | Supportive Housing | Special Needs | Total |
|----------------------------|---------------------------|----------------|------------|------------------|----------|--------------------|---------------|-----------|
| Households no Dependents | 1 | 1 | 1 | 0 | 0 | 0 | 5 | 8 |
| Households With Dependents | 17 | 0 | 1 | 0 | 0 | 0 | 3 | 21 |
| Seniors | 1 | 0 | 1 | 0 | 0 | 3 | 1 | 6 |
| Totals | 19 | 1 | 3 | 0 | 0 | 3 | 9 | 35 |

| | | | | | | | | |
|---------------------|-----------|-----------|-----------|----------|----------|-----------|-----------|------------|
| Grand Totals | 56 | 17 | 62 | 2 | 1 | 13 | 48 | 199 |
|---------------------|-----------|-----------|-----------|----------|----------|-----------|-----------|------------|

* This does not include Victims of Violence living in shelters.