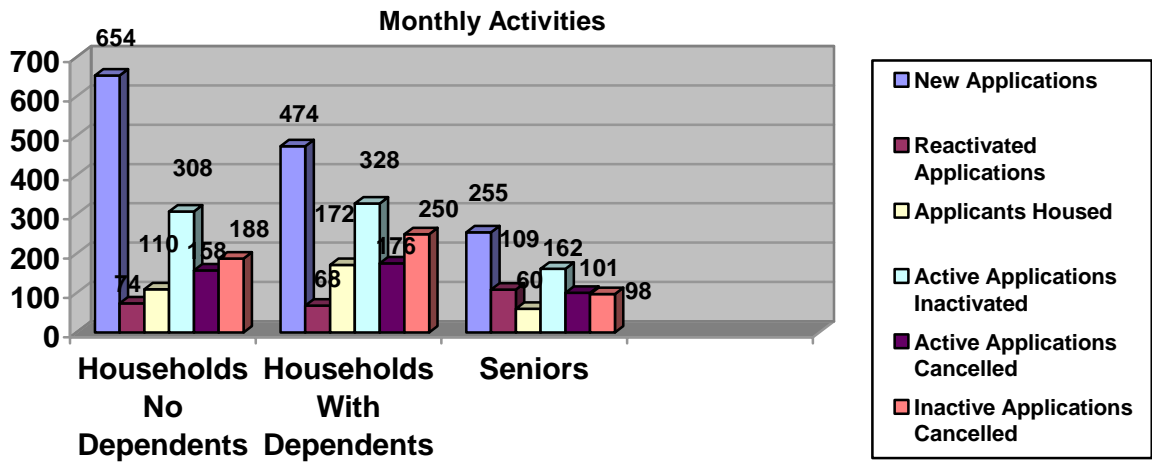




MONTHLY REPORT

June 2004

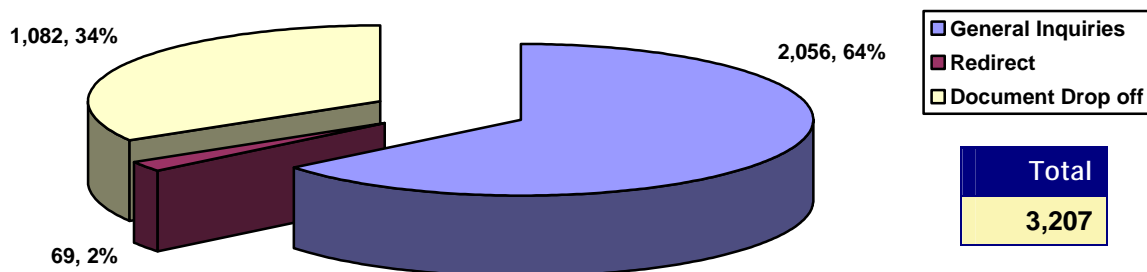
SUMMARY OF ACTIVITIES



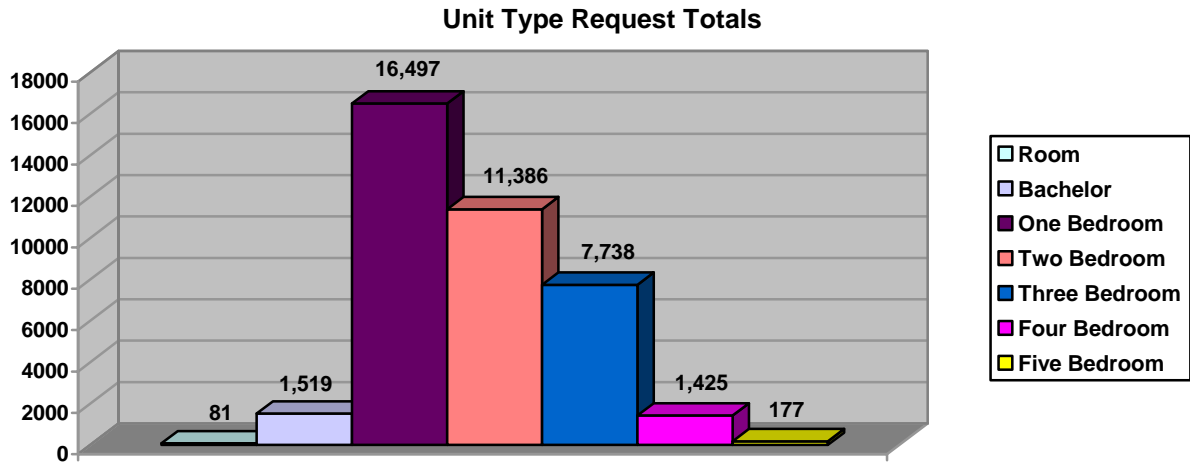
	Households no Dependents	Households With Dependents	Senior	Total
Waiting List As At June 1 st	23,587	27,569	14,885	66,041
New Applications	654	474	255	1,383
Reactivated Applications	74	68	109	251
Applicants Housed *	110	172	60	342
Active Applications Inactivated	308	328	162	798
Active Applications Cancelled	158	176	101	435
Inactive Applications Cancelled	188	250	98	536
Total Active Applications	17,158	19,758	11,907	48,823
Total Inactive Applications	6,627	7,687	3,064	17,378
Waiting List As At June 30 th	23,785	27,445	14,971	66,201

* Includes Households housed directly by Providers.

LOBBY ACTIVITIES



SIZE OF ACTIVE WAITING LIST

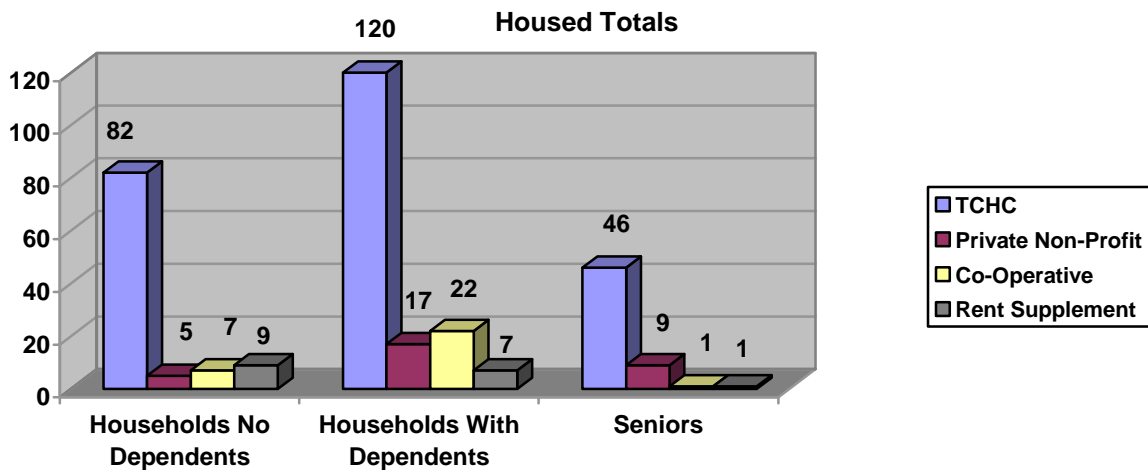


Unit Type	Households no Dependents	Households With Dependents	Senior	Total
Room	79	0	2	81
Bachelor	1,037	13	469	1,519
One Bedroom	14,337	1,092	11,068	26,497
Two Bedroom	1,354	9,686	346	11,386
Three Bedroom	301	7,415	22	7,738
Four Bedroom	42	1,383	0	1,425
Five Bedroom	8	169	0	177
Totals	17,158	19,758	11,907	48,823

Unit Type is from the largest types selected by the client.

	Households no Dependents	Households With Dependents	Senior	Total
Households Requesting Wheelchair Access	171	179	151	501

HOUSED ACTIVITIES



TCHC	Room	Bach	1B	2B	3B	4B	5B+	Total
Households no Dependents	10	37	22	12	1	0	0	82
Households With Dependents	0	3	3	56	53	1	4	120
Seniors	0	25	19	2	0	0	0	46
Totals	10	65	44	70	54	1	4	248

RENT SUPPLEMENT	Room	Bach	1B	2B	3B	4B	5B+	Total
Households no Dependents	0	0	9	0	0	0	0	9
Households With Dependents	0	0	0	4	2	1	0	7
Seniors	0	0	1	0	0	0	0	1
Totals	0	0	10	4	2	1	0	17

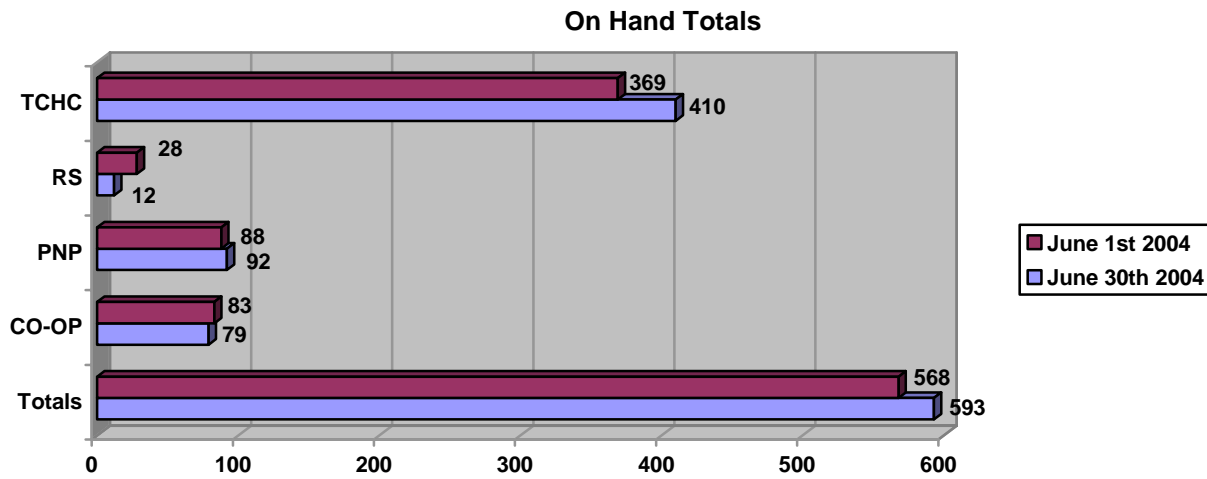
PNP	Room	Bach	1B	2B	3B	4B	5B+	Total
Households no Dependents	0	2	2	1	0	0	0	5
Households With Dependents	0	0	2	12	3	0	0	17
Seniors	0	2	6	1	0	0	0	9
Totals	0	4	10	14	3	0	0	31

CO-OP	Room	Bach	1B	2B	3B	4B	5B+	Total
Households no Dependents	0	3	4	0	0	0	0	7
Households With Dependents	0	0	2	14	6	0	0	22
Seniors	0	0	1	0	0	0	0	1
Totals	0	3	7	14	6	0	0	30

HOUSED PNP and CO-OP PROVIDERS

Providers	Room	Bach	1B	2B	3B	4B	5B+	Total
Akwa Honsta Non-Profit Aboriginal Homes Inc.		1	1					2
Aldebrain Attendant Care Services				4				4
Almise Co-Operative Homes Inc.			1					1
Ascot Co-Op Homes			2	2				4
Barsa Kelly Cari-Can Co-Operative Homes Inc.			1	3				4
Bello Horizonte Non-Profit Homes Corp.					1			1
City Park Co-Operative Apartments Inc.		1						1
Duncan Mills Labourers' Local 183 Co-Op				1				1
Ernescliffe Non-Profit Housing			1					1
55 Howard Park Avenue Co-Operative Homes		1						1
Las Flores Non-Profit			1					1
Mary Lambert Swale Non-Profit Homes Inc.				1				1
Muriel Collins Housing Co-Operative Inc.			1	1				2
New Spadina Garment Industry Corp.				2	2			4
Rakozi Villa Non-Profit Housing			1					1
Salvador Del Mundo/Upwood Co-Op				1				1
Scarborough Heights Co-Op				2				2
1630 Lawrence Avenue West Residences Inc.				1				1
St. Lawrence Neighbourhood Seniors Non-Profit Homes			2					2
Sts Peter and Paul Ukrainian Community Homes			1					1
Stephenson Senior Link Homes		1						1
Swansea Town Hall Residences			1					1
Terra Bella Non-Profit Housing Corporation				2				2
Tamil Co-Operative Homes Inc.				4				4
Tobias House of T		2						2
Villa Otthon				3				3
Vila Gaspar Corte Real Inc.				1				1
Walton Place			1					1
Willow Glen Co-Operative Inc.		1	1					2
Woburn Village Co-Op					6			6
Woodgreen Community Housing Inc.			1	1				2
Totals		7	16	29	9			61

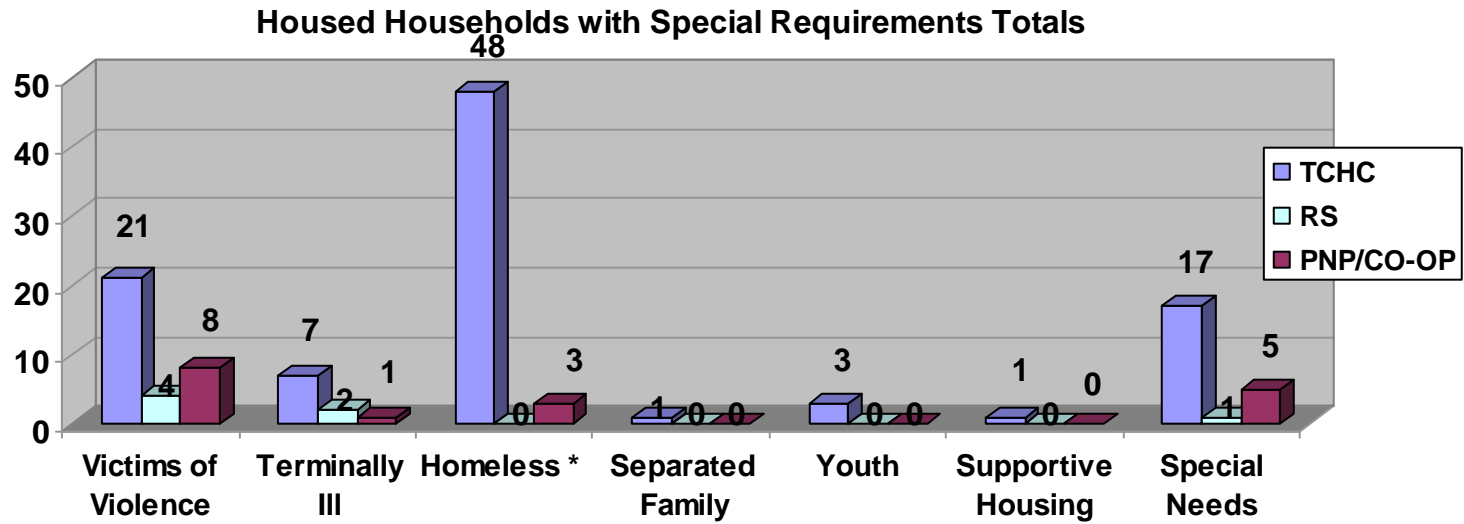
SUMMARY OF VACANCY ACTIVITY (June 30th, 2004)



Provider	On Hand as of June 1 st 2004	New	Cancelled	Offered	Accepted	On Hand as of June 30th 2004
TCHC	369	514	128	782	356	410
RS*	28	20	3	44	17	12
PNP	88	57	13	65	37	92
CO-OP	83	42	8	56	31	79
Totals	568	633	152	947	441	593

* Rent Supplement statistics previously included in TCHC.

HOUSED HOUSEHOLDS WITH SPECIAL HOUSING REQUIREMENTS



* This does not include Victims of Violence living in shelters

Housing Connections

TCHC	Victims of Violence (SPP)	Terminally III	Homeless *	Separated Family	Youth	Supportive Housing	Special Needs	Total
Households no Dependents	4	4	21	0	2	1	7	39
Households With Dependents	17	3	23	1	1	0	9	54
Seniors	0	0	4	0	0	0	1	5
Totals	21	7	48	1	3	1	17	98

RENT SUPPLEMENT	Victims of Violence (SPP)	Terminally III	Homeless *	Separated Family	Youth	Supportive Housing	Special Needs	Total
Households no Dependents	2	2	0	0	0	0	1	5
Households With Dependents	2	0	0	0	0	0	0	2
Seniors	0	0	0	0	0	0	0	0
Totals	4	2	0	0	0	0	1	7

PNP/CO-OP	Victims of Violence (SPP)	Terminally III	Homeless *	Separated Family	Youth	Supportive Housing	Special Needs	Total
Households no Dependents	3	1	2	0	0	0	2	8
Households With Dependents	5	0	1	0	0	0	3	9
Seniors	0	1	0	0	0	0	0	1
Totals	8	2	3	0	0	0	5	18

Grand Totals	33	11	51	1	3	1	23	123
---------------------	-----------	-----------	-----------	----------	----------	----------	-----------	------------