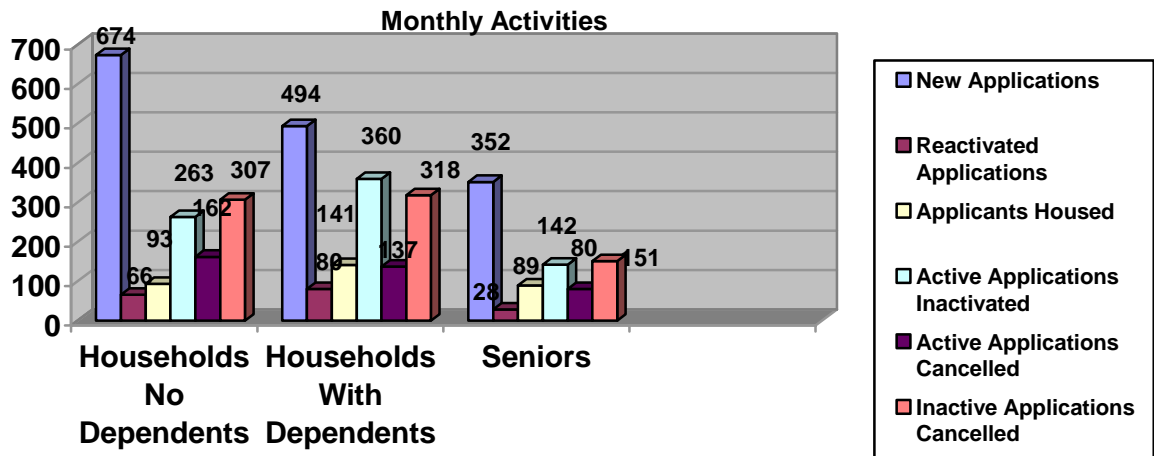




## **MONTHLY REPORT**

**July 2004**

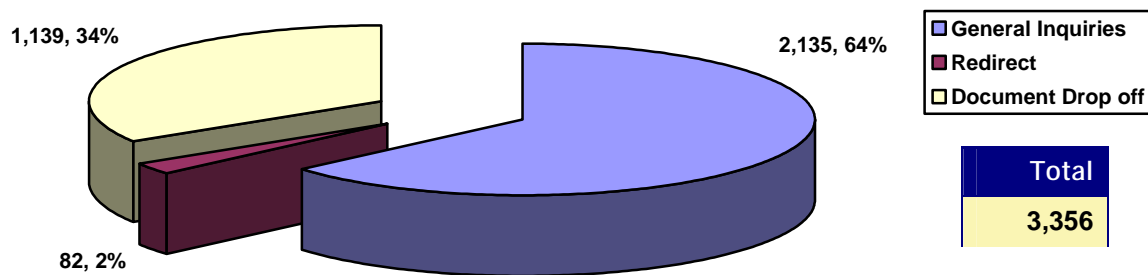
**SUMMARY OF ACTIVITIES**



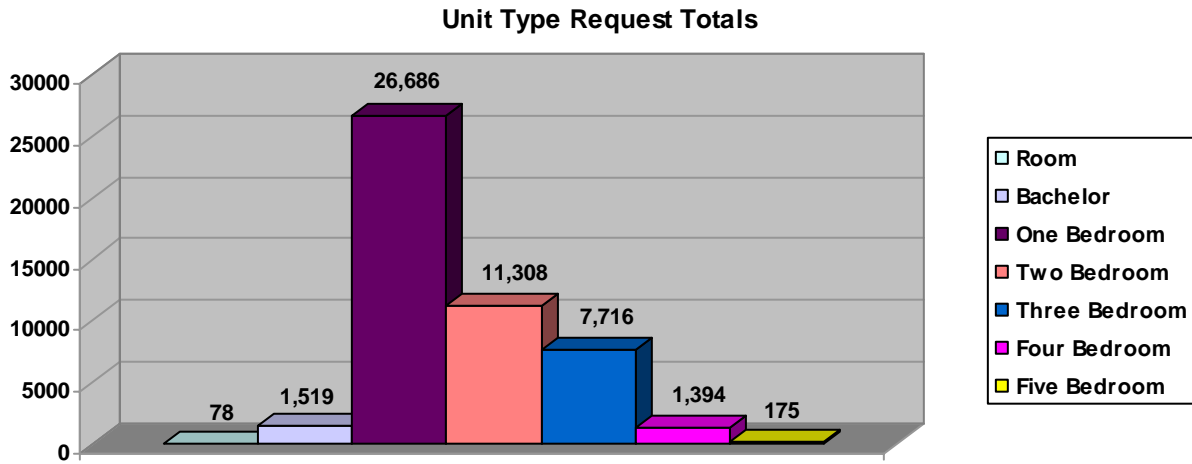
	Households no Dependents	Households With Dependents	Senior	Total
Waiting List As At July 1 <sup>st</sup>	23,785	27,445	14,971	66,201
New Applications	674	494	352	1,520
Reactivated Applications	66	80	28	174
Applicants Housed *	93	141	89	323
Active Applications Inactivated	263	360	142	765
Active Applications Cancelled	162	137	80	379
Inactive Applications Cancelled	307	318	151	776
<b>Total Active Applications</b>	<b>17,314</b>	<b>19,614</b>	<b>11,948</b>	<b>48,876</b>
<b>Total Inactive Applications</b>	<b>6,517</b>	<b>7,649</b>	<b>3,027</b>	<b>17,193</b>
Waiting List As At July 31 <sup>st</sup>	23,831	27,263	14,975	66,069

\* Includes Households housed directly by Providers.

**LOBBY ACTIVITIES**



**SIZE OF ACTIVE WAITING LIST**

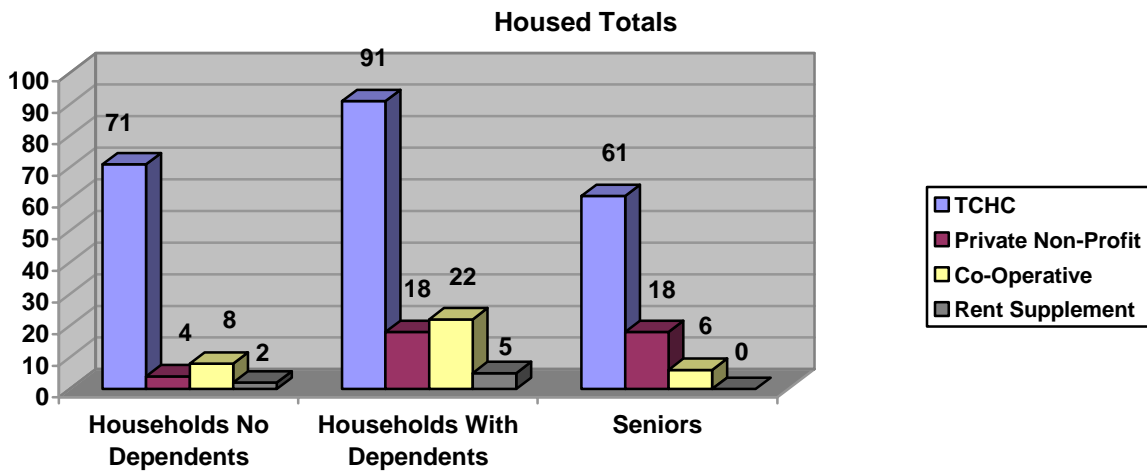


Unit Type	Households no Dependents	Households With Dependents	Senior	Total
Room	76	0	2	78
Bachelor	1,030	13	476	1,519
One Bedroom	14,456	1,118	11,112	26,686
Two Bedroom	1,384	9,589	335	11,308
Three Bedroom	315	7,378	23	7,716
Four Bedroom	45	1,349	0	1,394
Five Bedroom	8	167	0	175
<b>Totals</b>	<b>17,314</b>	<b>19,614</b>	<b>11,948</b>	<b>48,876</b>

Unit Type is from the largest types selected by the client.

	Households no Dependents	Households With Dependents	Senior	Total
<b>Households Requesting Wheelchair Access</b>	<b>179</b>	<b>155</b>	<b>152</b>	<b>486</b>

**HOUSED ACTIVITIES**



TCHC	Room	Bach	1B	2B	3B	4B	5B+	Total
Households no Dependents	7	22	27	14	1	0	0	71
Households With Dependents	0	0	2	56	28	5	0	91
Seniors	0	42	19	0	0	0	0	61
<b>Totals</b>	<b>7</b>	<b>64</b>	<b>48</b>	<b>70</b>	<b>29</b>	<b>5</b>	<b>0</b>	<b>223</b>

RENT SUPPLEMENT	Room	Bach	1B	2B	3B	4B	5B+	Total
Households no Dependents	0	0	1	0	0	1	0	2
Households With Dependents	0	0	0	3	1	1	0	5
Seniors	0	0	0	0	0	0	0	0
<b>Totals</b>	<b>0</b>	<b>0</b>	<b>1</b>	<b>3</b>	<b>1</b>	<b>2</b>	<b>0</b>	<b>7</b>

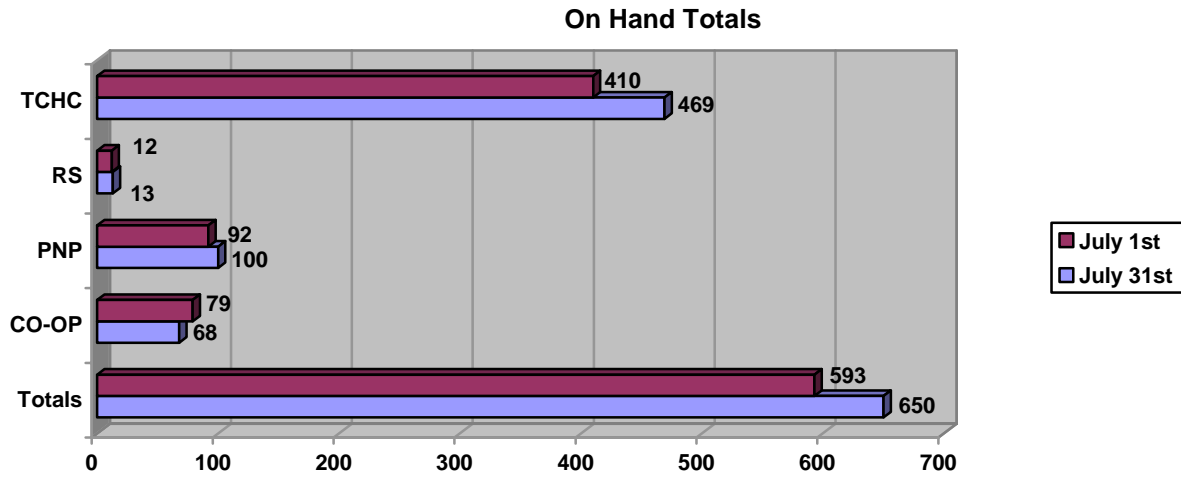
PNP	Room	Bach	1B	2B	3B	4B	5B+	Total
Households no Dependents	0	0	1	2	1	0	0	4
Households With Dependents	0	0	0	14	4	0	0	18
Seniors	0	1	16	1	0	0	0	18
<b>Totals</b>	<b>0</b>	<b>1</b>	<b>17</b>	<b>17</b>	<b>5</b>	<b>0</b>	<b>0</b>	<b>40</b>

CO-OP	Room	Bach	1B	2B	3B	4B	5B+	Total
Households no Dependents	0	1	5	2	0	0	0	8
Households With Dependents	0	0	0	15	4	2	1	22
Seniors	0	0	4	2	0	0	0	6
<b>Totals</b>	<b>0</b>	<b>1</b>	<b>9</b>	<b>19</b>	<b>4</b>	<b>2</b>	<b>1</b>	<b>36</b>

**HOUSED PNP and CO-OP PROVIDERS**

Providers	Room	Bach	1B	2B	3B	4B	5B+	Total
Akwa Honsta Non-Profit Aboriginal Homes Inc.			1	2				3
Aldebrain Attendant Care Services				4				4
Almise Co-Operative Homes Inc.			1					1
Ascot Co-Op Homes				3				3
Atkinson Housing Co-Op				1		2	1	4
Brimell Court Co-Operative					2			2
Bellamy Housing Co-Operative Inc.				1				1
Canadian Martyrs Seniors Residence (The Archdiocese of Toronto)			1					1
Chinese Evergreen Non-Profit Homes			1					1
City Park Co-Operative Apartments Inc.		1						1
Hellenic Home for the Aged Inc.			1					1
Humbervale Christian Outreach Foundation Inc.			2					2
Italian Canadian Benevolent Seniors – Cabot Terrace			1					1
Kehilla Residential Program				1				1
Loyola Arrupe Corporation		1						1
New Hibret Co-Operative Homes Inc.				1				1
New Spadina Garment Industry Corp.				3	2			5
Nisbet Lodge (McClintock Manor)			1					1
Orchard Grove Housing Co-Operative				1				1
Older Women’s Network Housing Co-Operative			2	1				3
Our Saviour Thistle town Lutheran Lodge			1					1
Rouge Valley Co-Operative Homes Inc.				1				1
Salvador Del Mundo/Upwood Co-Op			5	5				10
Sts Peter and Paul Ukrainian Community Homes			2					2
St. Mark’s Don Mills Non-Profit Housing Corp.					1			1
Swansea Town Hall Residences			1					1
Tamil Co-Operative Homes Inc.			3					3
The St. Hilda’s Towers Inc.			1					1
Thornclyffe Park Co-Operative Homes				2				2
Villa Luso Non-Profit Housing Corp.			4					4
Villa Otthon					2			2
Vila Gaspar Corte Real Inc.				1				1
Wigwamen Incorporated				6				6
Woburn Village Co-Op			1		2			3
<b>Totals</b>		<b>2</b>	<b>29</b>	<b>33</b>	<b>9</b>	<b>2</b>	<b>1</b>	<b>76</b>

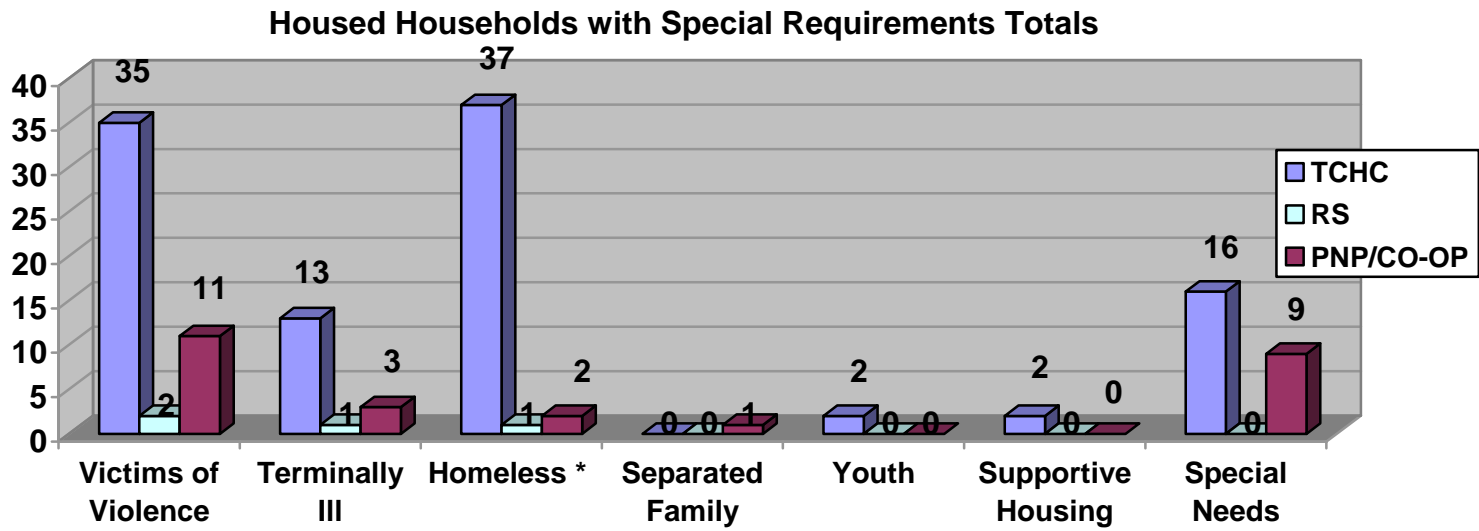
**SUMMARY OF VACANCY ACTIVITY**



Provider	On Hand as of July 1 <sup>st</sup> 2004	New	Cancelled	Offered	Accepted	On Hand as of July 31 <sup>st</sup> 2004
TCHC	410	466	49	926	373	469
RS*	12	9	1	29	7	13
PNP	92	70	10	73	48	100
CO-OP	79	40	9	57	37	68
<b>Totals</b>	<b>593</b>	<b>585</b>	<b>69</b>	<b>1,085</b>	<b>465</b>	<b>650</b>

\* Rent Supplement statistics previously included in TCHC.

**HOUSED HOUSEHOLDS WITH SPECIAL HOUSING REQUIREMENTS**



\* This does not include Victims of Violence living in shelters

## Housing Connections

TCHC	Victims of Violence (SPP)	Terminally III	Homeless *	Separated Family	Youth	Supportive Housing	Special Needs	Total
Households no Dependents	13	7	8	0	1	0	7	36
Households With Dependents	18	2	19	0	1	0	5	45
Seniors	4	4	10	0	0	2	4	24
<b>Totals</b>	<b>35</b>	<b>13</b>	<b>37</b>	<b>0</b>	<b>2</b>	<b>2</b>	<b>16</b>	<b>105</b>

RENT SUPPLEMENT	Victims of Violence (SPP)	Terminally III	Homeless *	Separated Family	Youth	Supportive Housing	Special Needs	Total
Households no Dependents	1	0	1	0	0	0	0	2
Households With Dependents	1	1	0	0	0	0	0	2
Seniors	0	0	0	0	0	0	0	0
<b>Totals</b>	<b>2</b>	<b>1</b>	<b>1</b>	<b>0</b>	<b>0</b>	<b>0</b>	<b>0</b>	<b>4</b>

PNP/CO-OP	Victims of Violence (SPP)	Terminally III	Homeless *	Separated Family	Youth	Supportive Housing	Special Needs	Total
Households no Dependents	1	0	0	0	0	0	1	2
Households With Dependents	9	1	2	1	0	0	3	16
Seniors	1	2	0	0	0	0	5	8
<b>Totals</b>	<b>11</b>	<b>3</b>	<b>2</b>	<b>1</b>	<b>0</b>	<b>0</b>	<b>9</b>	<b>26</b>

<b>Grand Totals</b>	<b>48</b>	<b>17</b>	<b>40</b>	<b>1</b>	<b>2</b>	<b>2</b>	<b>25</b>	<b>135</b>
---------------------	-----------	-----------	-----------	----------	----------	----------	-----------	------------