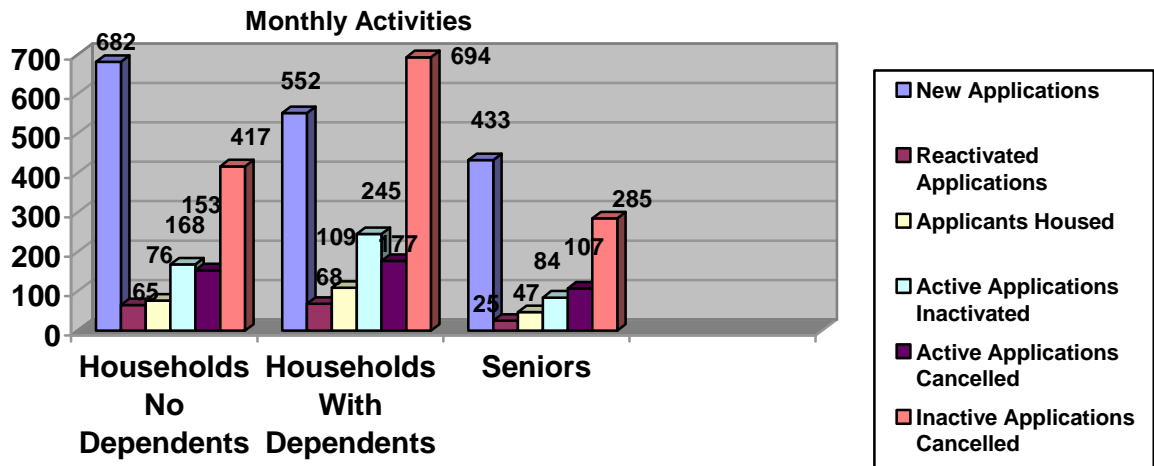




MONTHLY REPORT

August 2004

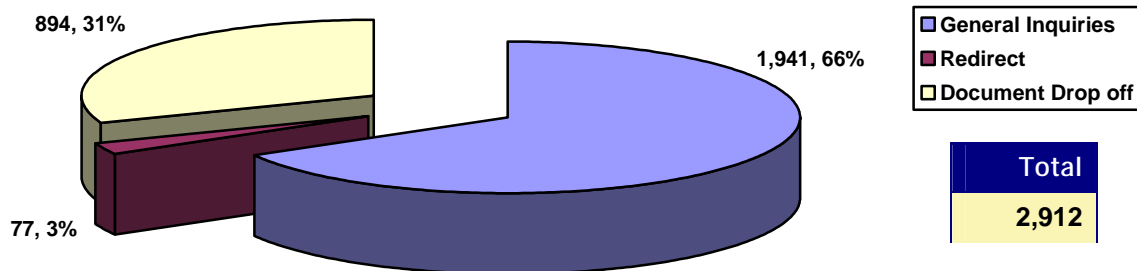
SUMMARY OF ACTIVITIES



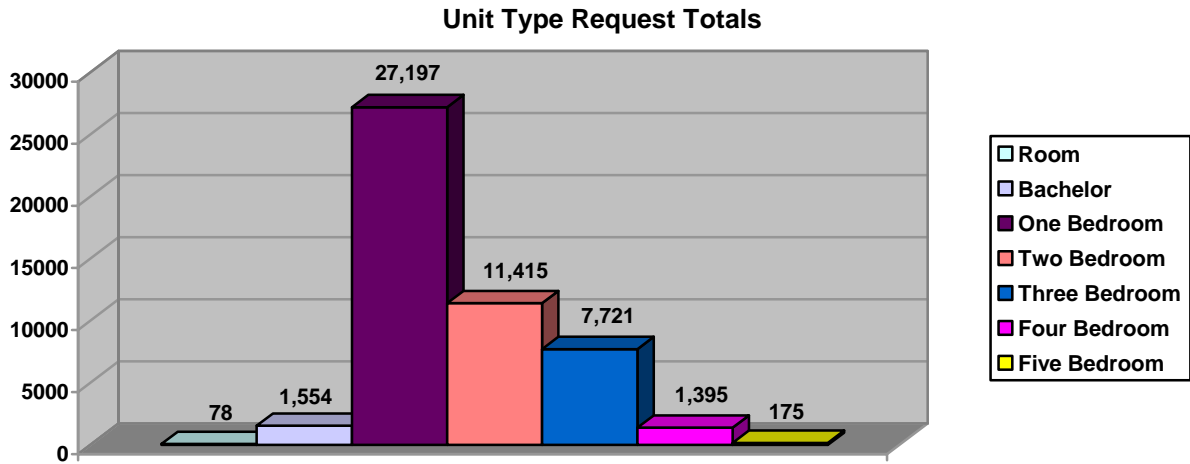
	Households no Dependents	Households With Dependents	Senior	Total
Waiting List As At August 1 st	23,831	27,263	14,975	66,069
New Applications	682	552	433	1,667
Reactivated Applications	65	68	25	158
Applicants Housed *	76	109	47	232
Active Applications Inactivated	168	245	84	497
Active Applications Cancelled	153	177	107	437
Inactive Applications Cancelled	417	694	285	1,396
Total Active Applications	17,664	19,703	12,168	49,535
Total Inactive Applications	6,203	7,132	2,801	16,136
Waiting List As At August 31st	23,867	26,835	14,969	65,671

* Includes Households housed directly by Providers.

LOBBY ACTIVITIES



SIZE OF ACTIVE WAITING LIST

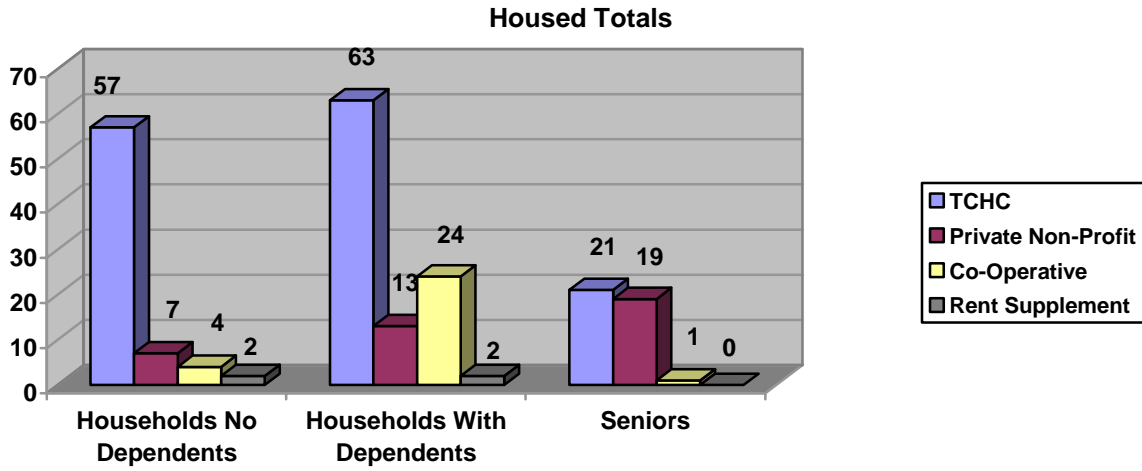


Unit Type	Households no Dependents	Households With Dependents	Senior	Total
Room	76	0	2	78
Bachelor	1,046	13	495	1,554
One Bedroom	14,732	1,156	11,309	27,197
Two Bedroom	1,426	9,657	332	11,415
Three Bedroom	325	7,366	30	7,721
Four Bedroom	51	1,344	0	1,395
Five Bedroom	8	167	0	175
Totals	17,664	19,703	12,168	49,535

Unit Type is from the largest types selected by the client.

	Households no Dependents	Households With Dependents	Senior	Total
Households Requesting Wheelchair Access	196	160	155	511

HOUSED ACTIVITIES



TCHC	Room	Bach	1B	2B	3B	4B	5B+	Total
Households no Dependents	22	6	14	13	2	0	0	57
Households With Dependents	1	0	1	31	24	6	0	63
Seniors	0	12	7	1	1	0	0	21
Totals	23	18	22	45	27	6	0	141

RENT SUPPLEMENT	Room	Bach	1B	2B	3B	4B	5B+	Total
Households no Dependents	0	0	1	1	0	0	0	2
Households With Dependents	0	0	0	2	0	0	0	2
Seniors	0	0	0	0	0	0	0	0
Totals	0	0	1	3	0	0	0	4

PNP	Room	Bach	1B	2B	3B	4B	5B+	Total
Households no Dependents	0	3	2	1	1	0	0	7
Households With Dependents	0	0	1	10	2	0	0	13
Seniors	0	5	14	0	0	0	0	19
Totals	0	8	17	11	3	0	0	39

CO-OP	Room	Bach	1B	2B	3B	4B	5B+	Total
Households no Dependents	0	1	2	0	0	1	0	4
Households With Dependents	0	1	1	13	6	3	0	24
Seniors	0	0	0	0	0	1	0	1
Totals	0	2	3	13	6	5	0	29

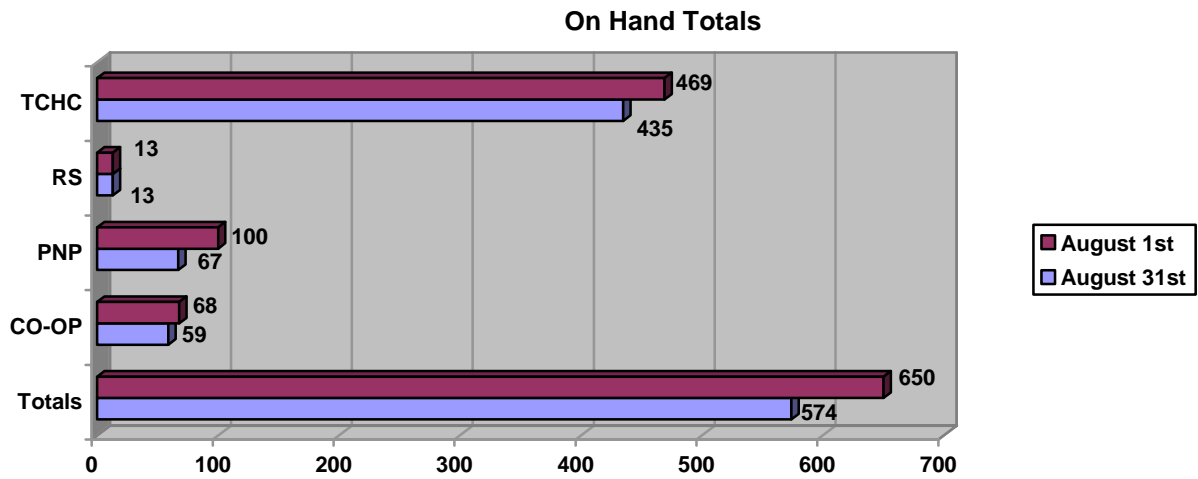
HOUSED PNP and CO-OP PROVIDERS

Providers	Room	Bach	1B	2B	3B	4B	5B+	Total
Akwa Honsta Non-Profit Aboriginal Homes Inc.		1						1
Aldebrain Attendant Care Services				5	1			6
Atkinson Housing Co-Op				1	1	3		5
Barsa Kelly Cari-Can Co-Operative Homes Inc.				2				2
Bello Horizonte Non-Profit Homes Inc.			1					1
Birtch Place Co-Operative Homes Inc.			1					1
Blue Danube Housing Development Ont. Inc.				1				1
B’Nai Brith Canada			1					1
Brimell Court Co-Operative					2			2
Central King Seniors Residence			3					3
Church of Atonement Alderwood Seniors (Jubilee Centre)			1					1
Duncan Mills Labourers’ Local 183 Co-Op				1				1
Gardenview Co-Operative Homes				1				1
Glen Gardens Housing Co-Operative Inc.				2	1			3
Hellenic Home for the Aged Inc.			1					1
55 Howard Park Avenue Co-Operative		2						2
Jack Goodlad Senior Citizen Residences Corp.			1					1
Kehilla Residential Program					1			1
La Paz Co-Operative Homes Inc.						1		1
Maple Leaf Drive Seniors Non-Profit Residential			1					1
Mary Lambert Swale Non-Profit Homes Inc.					1			1
New Hibret Co-Operative Homes Inc.					1			1
New Spadina Garment Industry Corp.				2				2
Niagara Neighbourhood Housing Co-Operative Inc.				1				1
Our Saviour Thistletown Lutheran Lodge			1					1
Peregrine Co-Operative Homes Inc.				2				2
Rakozi Villa Non-Profit Housing Corp.		1						1
Riverdale Co-Operative Houses Inc.			2	2				4
St. David’s Village Corporation		3						3
St. Demetrius Ukrainian Development Corporation			4					4
St. Lawrence Neighbourhood Seniors Non-Profit Housing			1					1
St. Matthew’s Bracondale House		1						1
Scarborough Heights Co-Operative Homes Inc.				1				1
Tobias House of Toronto		1						1
Villa Otthon				1				1
Vila Gaspar Corte Real Inc.				1				1
Wigwamen Incorporated			1	1				1
Woburn Village Co-Op						1		1

Housing Connections

Providers	Room	Bach	1B	2B	3B	4B	5B+	Total
Woodgreen Community Housing Inc.		1	1					2
Zahav Charitable Foundation					1			1
Totals		10	20	24	9	5		68

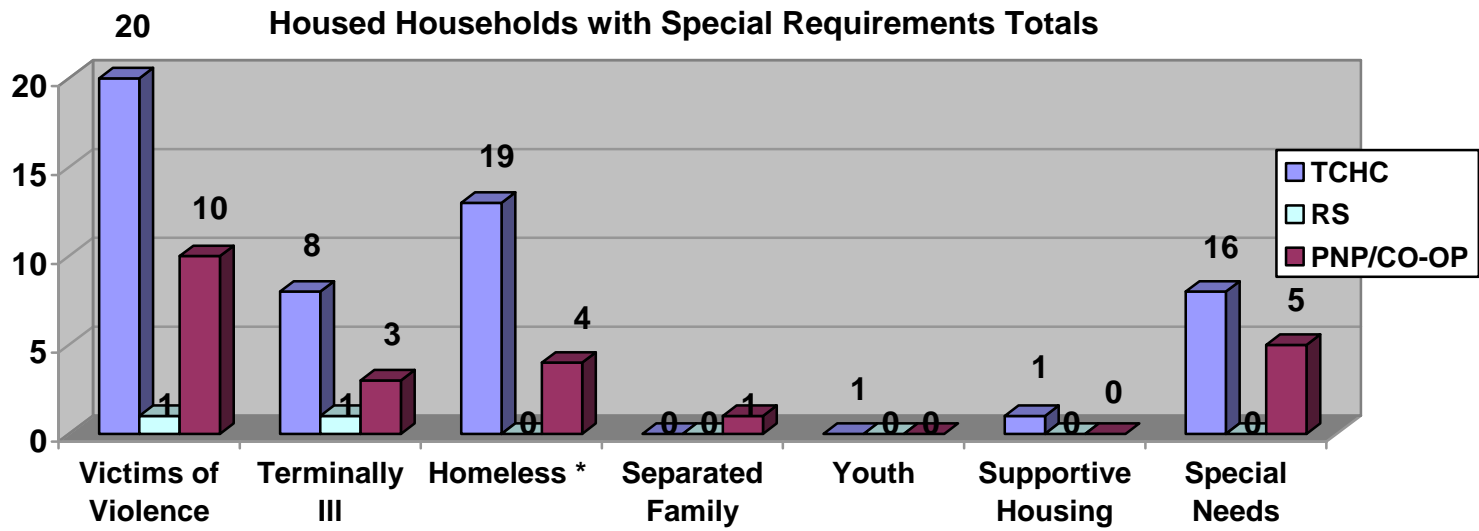
SUMMARY OF VACANCY ACTIVITY



Provider	On Hand as of Aug 1 st 2004	New	Cancelled	Offered	Accepted	On Hand as of Aug 31st 2004
TCHC	469	419	75	884	385	435
RS*	13	5	1	12	4	13
PNP	100	50	28	66	43	67
CO-OP	68	57	19	47	32	59
Totals	650	531	123	1,009	464	574

* Rent Supplement statistics previously included in TCHC.

HOUSED HOUSEHOLDS WITH SPECIAL HOUSING REQUIREMENTS



* This does not include Victims of Violence living in shelters

Housing Connections

TCHC	Victims of Violence (SPP)	Terminally III	Homeless *	Separated Family	Youth	Supportive Housing	Special Needs	Total
Households no Dependents	5	3	13	0	0	1	8	30
Households With Dependents	11	4	6	0	1	0	7	29
Seniors	4	1	0	0	0	0	1	6
Totals	20	8	19	0	1	1	16	65

RENT SUPPLEMENT	Victims of Violence (SPP)	Terminally III	Homeless *	Separated Family	Youth	Supportive Housing	Special Needs	Total
Households no Dependents	0	0	0	0	0	0	0	0
Households With Dependents	1	1	0	0	0	0	0	2
Seniors	0	0	0	0	0	0	0	0
Totals	1	1	0	0	0	0	0	2

PNP/CO-OP	Victims of Violence (SPP)	Terminally III	Homeless *	Separated Family	Youth	Supportive Housing	Special Needs	Total
Households no Dependents	2	1	1	1	0	0	1	6
Households With Dependents	8	2	3	0	0	0	3	16
Seniors	0	0	0	0	0	0	1	1
Totals	10	3	4	1	0	0	5	23

Grand Totals	31	12	23	1	1	1	21	90
---------------------	-----------	-----------	-----------	----------	----------	----------	-----------	-----------